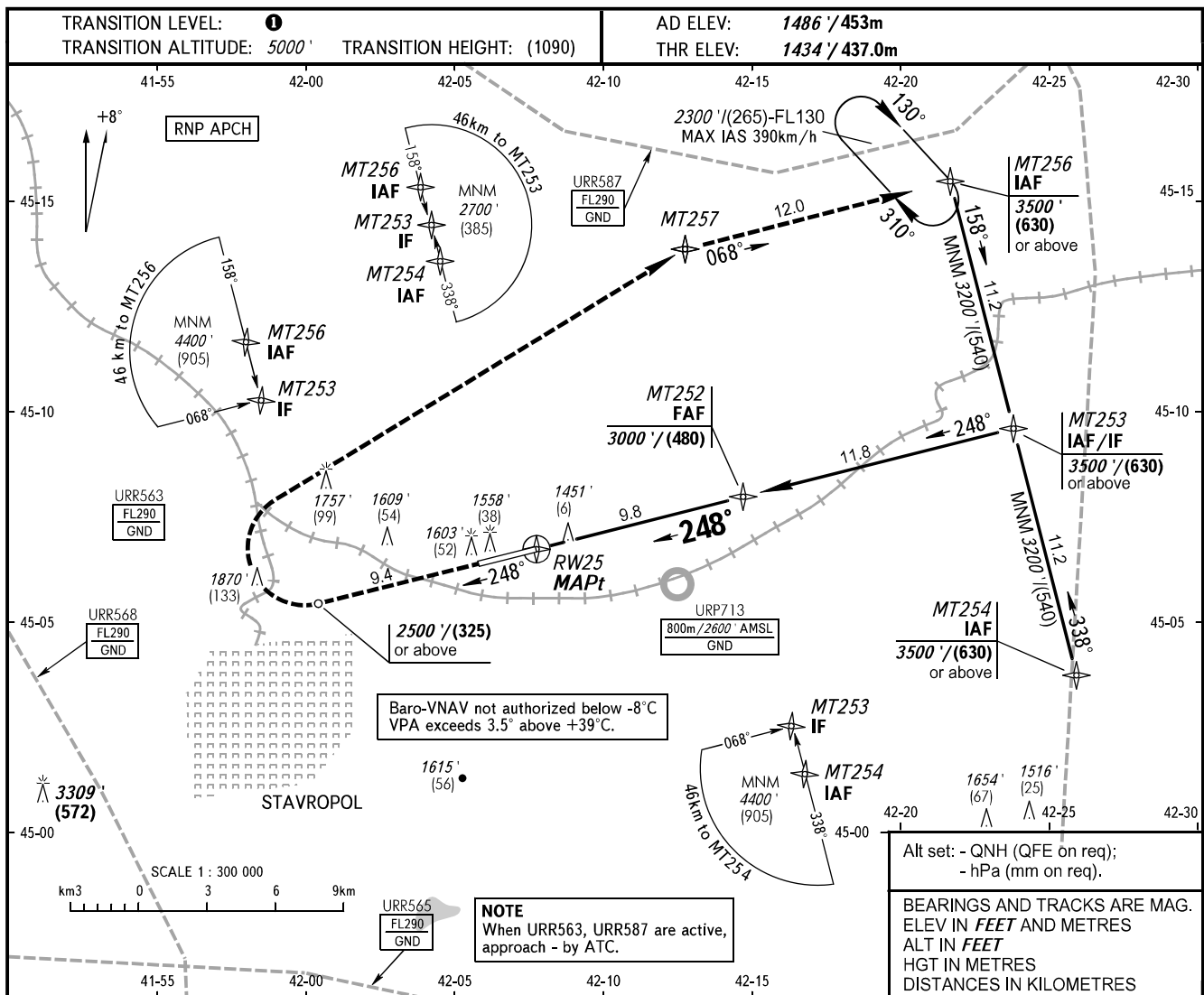


INSTRUMENT
APPROACH
CHART - ICAO

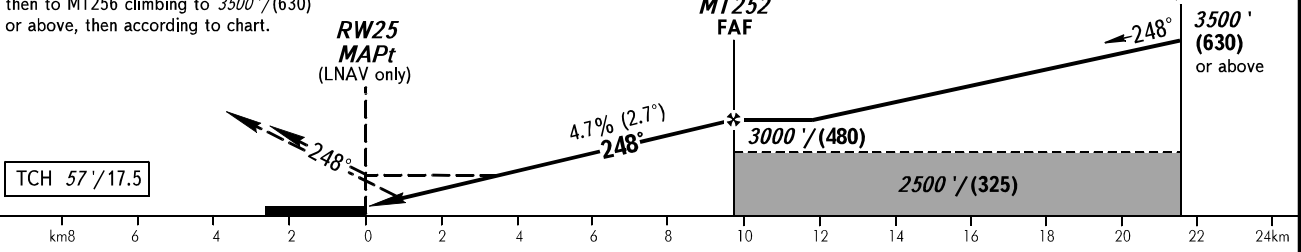
TOWER 120.900

STAVROPOL, RUSSIA
SHPAKOVSKOYE
RNAV RWY 25



MISSED APPROACH

Climb on track 248° to 2500'/(325) or above, then turn RIGHT to MT257, then to MT256 climbing to 3500'/(630) or above, then according to chart.



| OCA(H) | | A | B | C | D | | | | | | |
|----------------------|-----------|--------------------|--------------------|--------------------|--------------------|-----|-----|-----|-----|-----|------|
| Straight-in Approach | LNAV | 1765' (331') (100) | 1765' (331') (100) | 1765' (331') (100) | 1765' (331') (100) | | | | | | |
| | LNAV/VNAV | 1641' (207') (65) | 1653' (219') (70) | 1672' (238') (75) | 1698' (264') (80) | | | | | | |
| Circling | | 1940' (450') (140) | 1980' (500') (155) | 2150' (670') (205) | 2270' (780') (240) | | | | | | |
| GROUND SPEED | | km/h | 150 | 180 | 210 | 240 | 270 | 300 | 330 | 360 | 390 |
| RATE OF DESCENT | | m/s | 1.9 | 2.3 | 2.7 | 3.1 | 3.5 | 3.9 | 4.3 | 4.7 | 5.0 |
| | | ft/min | 385 | 463 | 540 | 617 | 694 | 771 | 848 | 925 | 1002 |

TRANSITION LEVEL:
 - FL060 when QNH is 1013 hPa (760mm mercury column) or above;
 - FL070 when QNH is 977 hPa (733mm mercury column) or above, but less than 1013 hPa (760mm mercury column);
 - FL080 when QNH is less than 977 hPa (733mm mercury column).

CHANGE: Limiting bearing line withdrawn, URP713