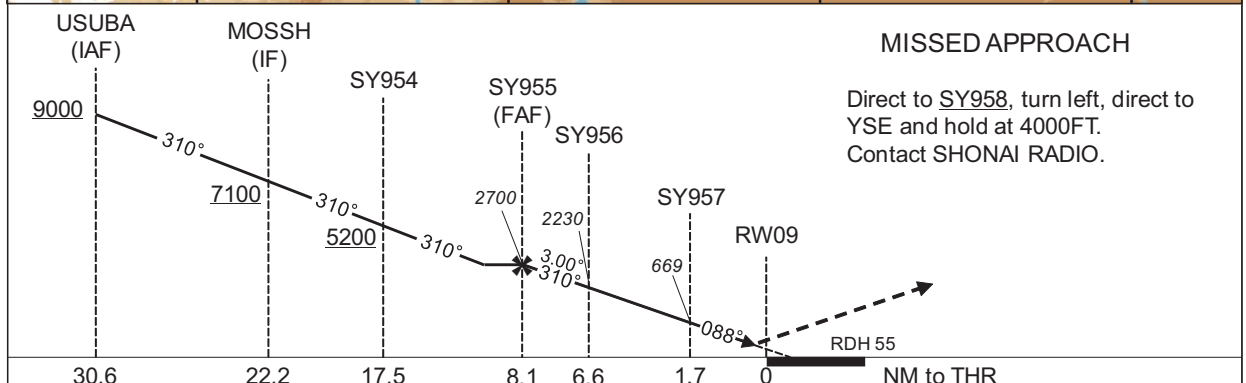
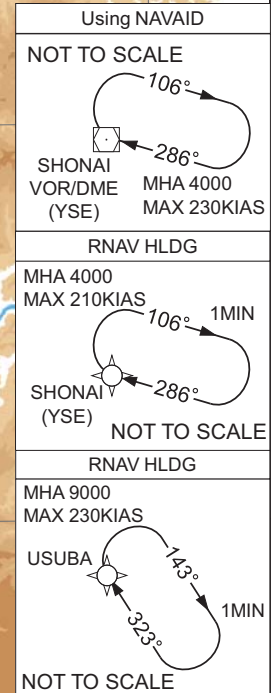
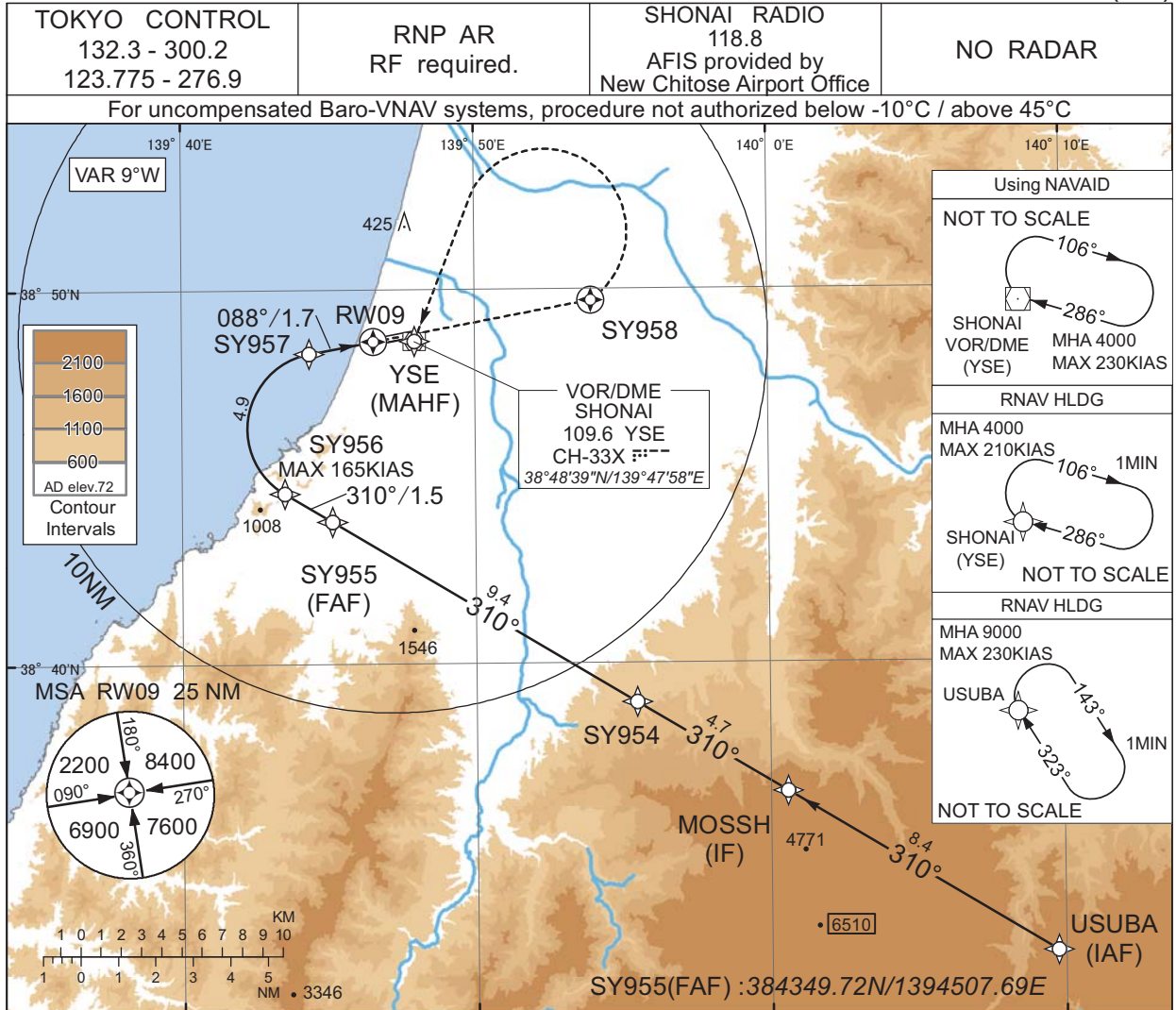


INSTRUMENT APPROACH CHART

RJSY / SHONAI

RNP RWY09(AR)



Missed APCH climb gradient MNM 5.0%

CAT	THR elev. 59		AD elev. 72	
	RNP 0.10		RNP 0.30	
	DA(H)	RVR/CMV	DA(H)	RVR/CMV
A	-	-	-	-
B	-	-	-	-
C	372(313)	1000	424(365)	1000
D	372(313)	1400	424(365)	1400

MINIMA with Missed APCH climb gradient of 2.5% are not established.

**Authorization Required**

CHANGE : HLDG pattern for using NAVAID.

## INSTRUMENT APPROACH CHART

RJSY / SHONAI

RNP RWY09(AR)

Coding Table

Serial Number	Path Descriptor	Waypoint Identifier	Fly Over	Course °M(°T)	Magnetic Variation	Distance (NM)	Turn Direction	Altitude (FT)	Speed (KIAS)	VPA/RDH (°/FT)	RNP Value
001	IF	USUBA	-	-	-8.8	-	-	+9000	-	-	-
002	TF	MOSSH	-	310 (301.2)	-8.8	8.4	-	+7100	-	-	1.0
003	TF	SY954	-	310 (301.1)	-8.8	4.7	-	+5200	-	-	1.0
004	TF	SY955	-	310 (301.1)	-8.8	9.4	-	2700	-	-	1.0
005	TF	SY956	-	310 (301.0)	-8.8	1.5	-	2230	-165	-3.00	0.1 0.3
006	RF Center: SYRF1 r=2.03NM	SY957	-	-	-8.8	4.9	R	669	-	-3.00	0.1 0.3
007	TF	RW09	Y	088 (079.4)	-8.8	1.7	-	114	-	-3.00/55	0.1 0.3
008	DF	SY958	Y	-	-8.8	-	-	-	-	-	1.0
009	DF	YSE	-	-	-8.8	-	L	4000	-	-	1.0

Path	Waypoint Identifier	Inbound Course °M(°T)	Magnetic Variation	Outbound Time (MIN)	Turn Direction	Minimum Altitude (FT)	Maximum Altitude (FT)	Speed (KIAS)	RNP Value
Hold	USUBA	323 (314.1)	-8.8	1.0 (-14000)	R	9000	FL140	-230 (-14000)	1.0
Hold	YSE	286 (277.0)	-8.8	1.0 (-14000)	R	4000	FL140	-210 (-14000)	1.0

Waypoint Coordinates

Waypoint Identifier	Coordinates	RF Arc Center Identifier	Coordinates
USUBA	383214.02N / 1400944.88E	SYRF1	384619.71N / 1394450.17E
MOSSH	383634.00N / 1400035.10E		
SY954	383858.43N / 1395528.53E		
SY955	384349.72N / 1394507.69E		
SY956	384435.19N / 1394330.47E		
SY957	384819.37N / 1394421.61E		
RW09	384838.58N / 1394633.12E		
SY958	384943.40N / 1395359.19E		
YSE	384838.81N / 1394757.51E		

CHANGE : PROC renamed.