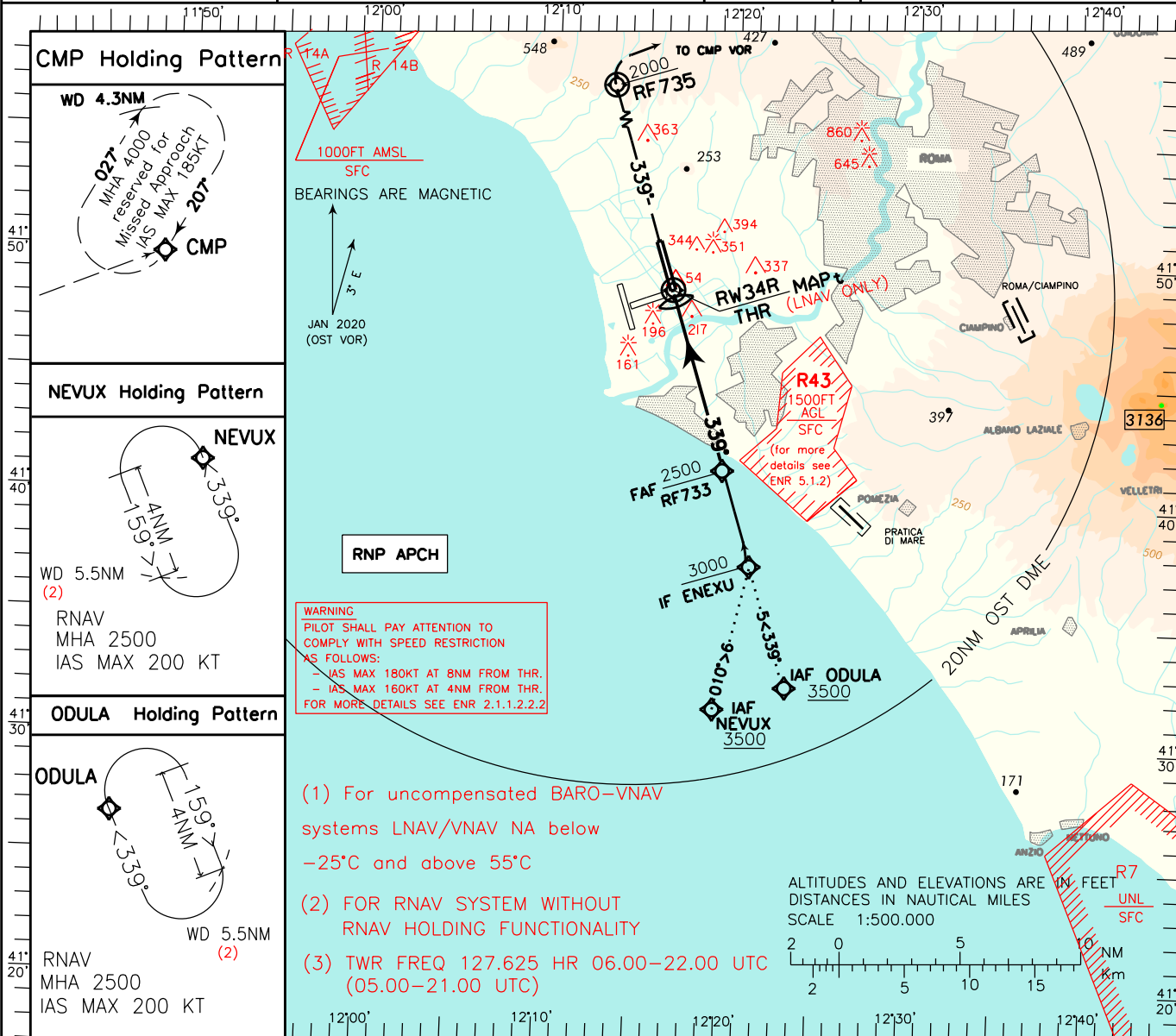


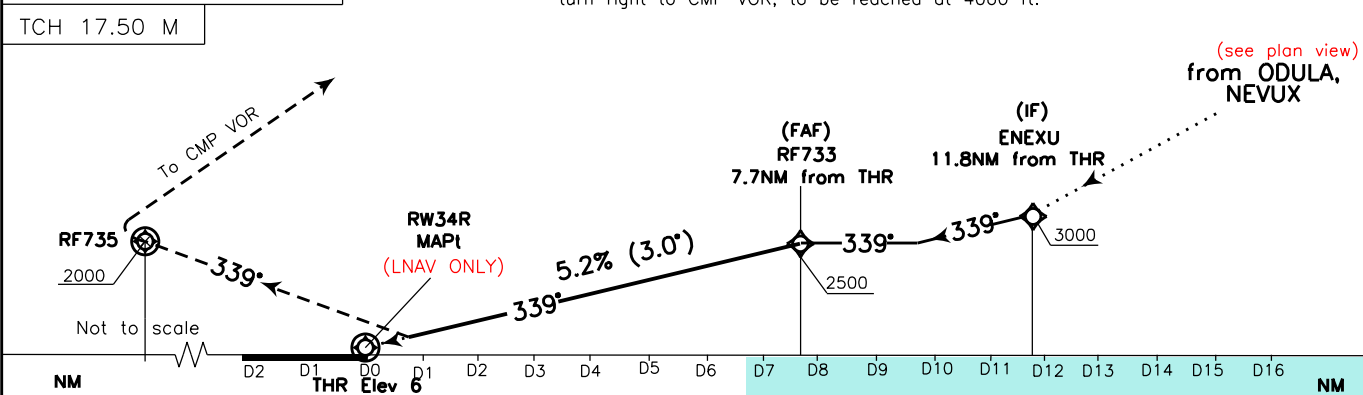
ICAO - INSTRUMENT APPROACH CHART

<b>EGNOS</b> CH 52841 E34A	<b>APP</b> Roma Arrivals Roma Director	125.500 (127.950) 131.250 (119.200)	<b>AD ELEV</b> 14	<b>LIRF</b> <b>ROMA/FIUMICINO</b> <b>RNP RWY 34R</b>
	<b>TWR</b> Fiume TWR (3)	127.625 (118.700)		
	<b>ATIS</b> Fiume Arrival Information	126.125		

DOC. 8168 ED.7 - 2020 AMD9  
CHANGE: TWR FREQ MODIFIED; REMARK 3 ADDED



**TRANSITION ALT 6000**  
MISSED APPROACH: Proceed on TR 339° climbing to 4000 ft. At RF735 at 2000 ft or above, turn right to CMP VOR, to be reached at 4000 ft.



STRAIGHT IN APPROACH	OCA(OCH)	A B C D				FT per MIN GS		FAF - THR	DIST THR	ALT (HGT)	MNM SECT ALT ARP
		25 NM	20 NM	15 NM	10 NM	850	425				
LPV	360 (354)	370 (364)	380 (374)	390 (384)	850	425	7.6 NM	7	2292 (2286)	5800	
					745	425	7.6 NM	6	1973 (1967)		
					635	425	7.6 NM	5	1654 (1648)		
					530	425	7.6 NM	4	1336 (1330)		
LNAV/VNAV	360 (354)	370 (364)	380 (374)	390 (384)	850	425	7.6 NM	7	2292 (2286)	5800	
					745	425	7.6 NM	6	1973 (1967)		
LNAV	490 (484)	490 (484)	490 (484)	490 (484)	850	425	7.6 NM	7	2292 (2286)	5800	
					745	425	7.6 NM	6	1973 (1967)		
CIRCLING	800 (786)	900 (886)	900 (886)	900 (886)	850	425	7.6 NM	7	2292 (2286)	5800	
					745	425	7.6 NM	6	1973 (1967)		