

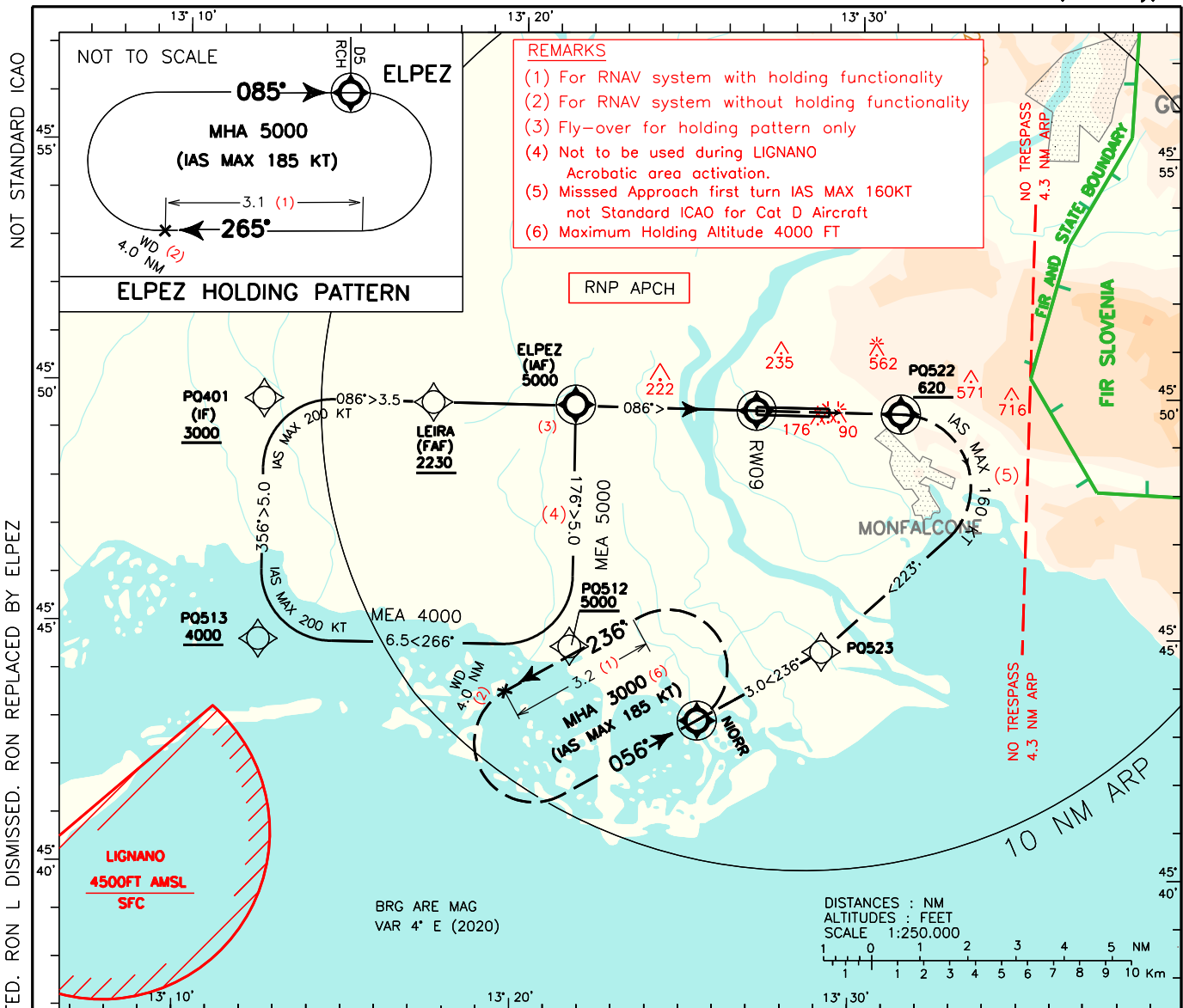
INSTRUMENT APPROACH CHART - ICAO

EGNOS E09A CH 84714

AERODROME ELEV 40

APP Padova Radar 119.175  
TWR Ronchi TWR 130.205

TRieste RONCHI DEI LEGIONARI LIPO RNP Y RWY 09 (LPV only)



NOT STANDARD ICAO

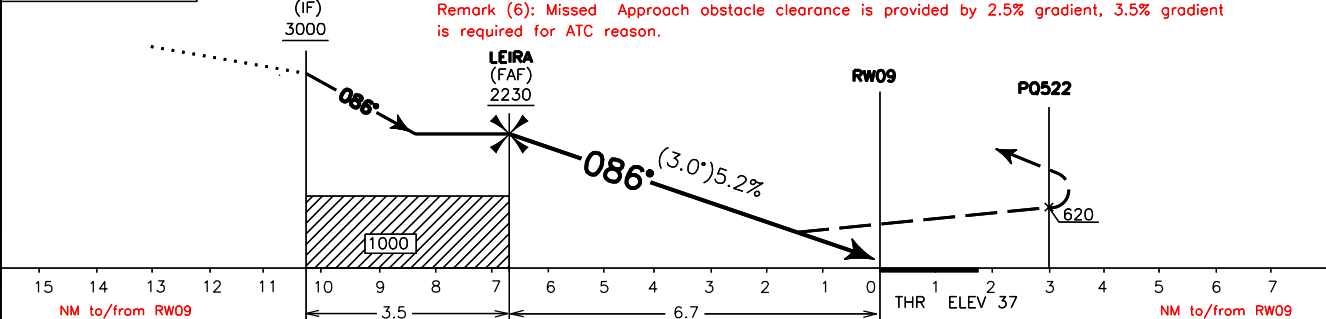
CHANGE: MAG VAR UPDATED. RON L DISMISSED. RON REPLACED BY ELPEZ

**REMARKS**

- (1) For RNAV system with holding functionality
- (2) For RNAV system without holding functionality
- (3) Fly-over for holding pattern only
- (4) Not to be used during LIGNANO Acrobatic area activation.
- (5) Missed Approach first turn IAS MAX 160KT not Standard ICAO for Cat D Aircraft
- (6) Maximum Holding Altitude 4000 FT

TRANSITION ALT 6000 TCH 15 M MISSED APPROACH: Proceed on TR 086°, climbing to 3000 ft. At P0522 to be reached at 620FT or above turn right (IAS MAX 160kt) on TR223° to P0523 then turn right on TR 236° bound to NIORR to hold. Due to State boundary remain within 4.3 NM from ARP during turn.

Remark (6): Missed Approach obstacle clearance is provided by 2.5% gradient, 3.5% gradient is required for ATC reason.



OCA (OCH)		A	B	C	D	(*) CIRCLING SECTOR: Only South of RWY:  for CAT C/D ACFT remain within 4.3 NM ARP	FT	GS	Distance to RWY 09	ALT (HGT)	MIN SECT ALT 25NM ARP 
STRAIGHT IN APPROACH	LPV	360 (323)					PER				
							MIN				
							425	80	6 NM	2000 (1963)	
						530	100	5 NM	1680 (1643)		
						635	120	4 NM	1360 (1323)		
						740	140	3 NM	1040 (1003)		
						850	160	2 NM	725 (688)		
CIRCLING (*)		700 (660)	1150 (1110)	1400 (1360)							