

VOR/DME ELY 113.95 Chan 86(Y)	APP CRS 179°	Rwy Idg TDZE Apt Elev N/A N/A 6260
---	------------------------	--

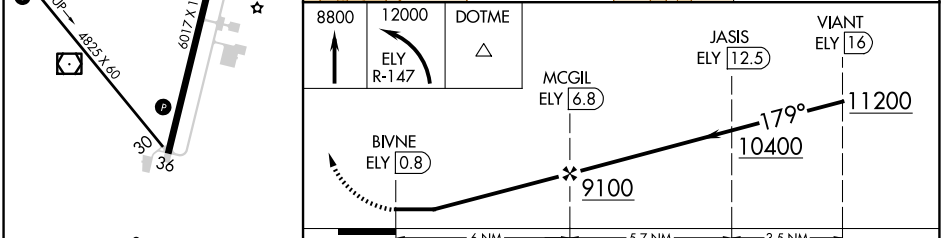
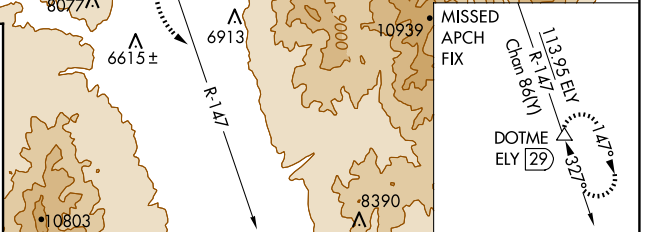
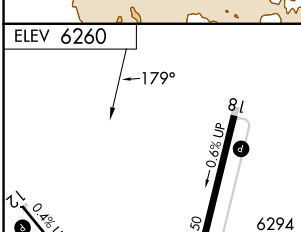
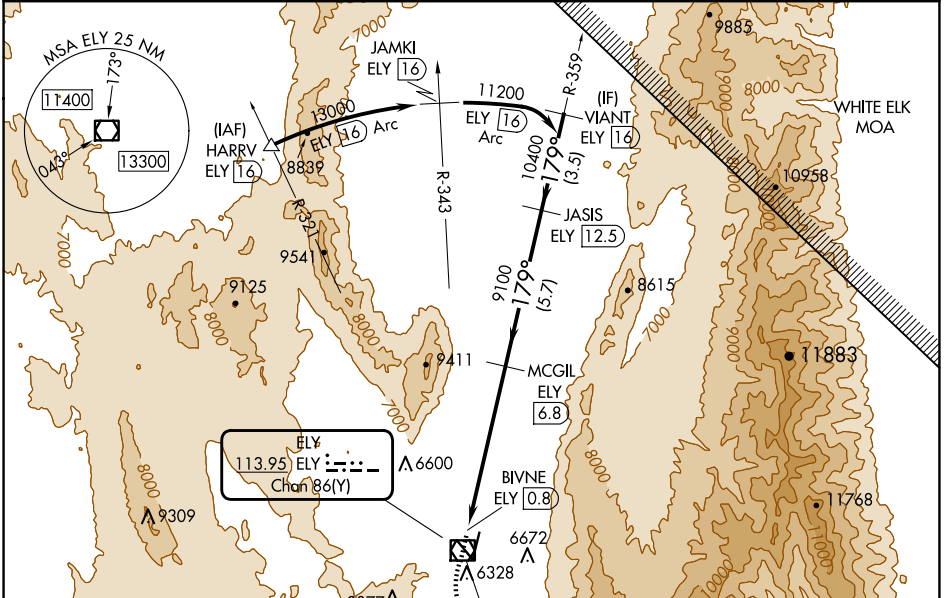
VOR-C
ELY/YELLAND FLD (ELY)

DME required.

▼ Rwy 30 helicopter visibility reduction below 1 SM NA. Circling Rwy 30 NA at night. Circling NA for Cats A and B southwest of Rwy 12 and west of Rwy 36. Circling NA for Cats C and D southwest of Rwy 12 and east of Rwy 18.

MISSED APPROACH: Climb to 8800 then climbing left turn to 12000 on ELY VOR/DME R-147 to DOTME/ELY 29 DME and hold.

ASOS 120.625	SALT LAKE CENTER 133.45 317.625	UNICOM 122.8 (CTAF) 0
------------------------	---	---------------------------------



MIRL Rwy 12-30 0	HIRL Rwy 18-36 0	REIL Rwys 18 and 36 0		
CATEGORY	A	B	C	D
C CIRCLING	8060-1 1/4 1800 (1800-1 1/4)	8060-1 1/2 1800 (1800-1 1/2)	8060-3 1800 (1800-3)	8220-3 1960 (2000-3)

SW-4, 20 MAR 2025 to 17 APR 2025

SW-4, 20 MAR 2025 to 17 APR 2025