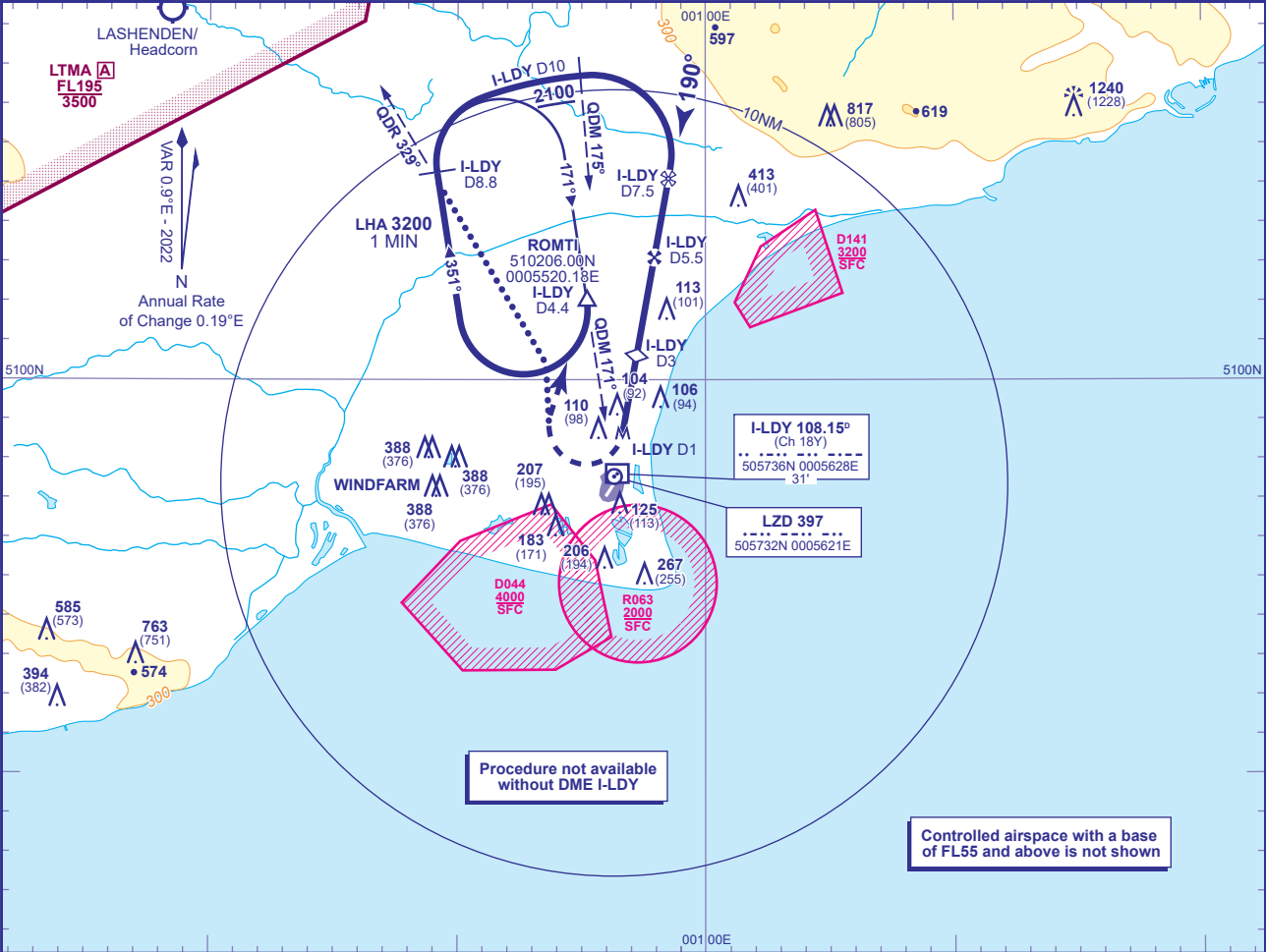




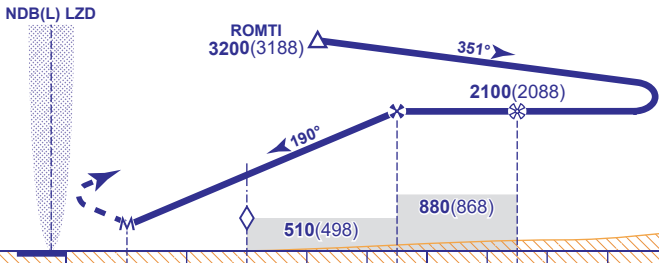
APP	120.705	LYDD APPROACH	AD ELEVATION	13
TWR	119.380	LYDD TOWER	THR ELEVATION	12
ATIS	129.230	LYDD INFORMATION	OBSTACLE ELEVATION	1240 AMSL (1228) (ABOVE THR)
			BEARINGS ARE MAGNETIC	TRANSITION ALTITUDE
				6000



**RECOMMENDED PROFILE** Gradient 6.10%, 371FT/NM

NM	5	4	3 (SDF)	2	1
ALT(HGT)	1910(1898)	1540(1528)	1170(1158)	800(788)	430(418)

**MAPt 1 I-LDY DME**  
Turn right as soon as possible climbing to 3200 to join the hold at ROMTI. Continue climb in the holding pattern as required or as directed by ATC.



		DME I-LDY zero ranged to THR RWY 21					0	D1	D3	D5.5	D7.5
Aircraft Category	A	B	Rate of descent	G/S KT	160	140	120	100	80		
	Procedure	420(408)		520(508)	FT/MIN	990	860	740	620	490	
VM(C)OCA (OCH AAL)	Total Area	510(497)	N/A								
	West of RWY 03/21	N/A	510(497)								

**ALTERNATIVE PROCEDURE (Subject to ATC approval)** At the MAPt turn right onto track 359°, climbing to 2100(2088), to intercept NDB(L) LZD QDR 329° outbound. At I-LDY DME 8.8 turn right to intercept the DME 10 arc clockwise at 2100(2088), then continue as for basic procedure.

- NOTES**  
 1 When joining the hold at 3200 pilots are to remain clear of EGD044 to the south of the hold when active up to 4000.  
 2 A/C to remain clear of EGD141 on approach and EGD044 on MAP.  
 3 FAT is offset 22° from RWY 21 C/L.