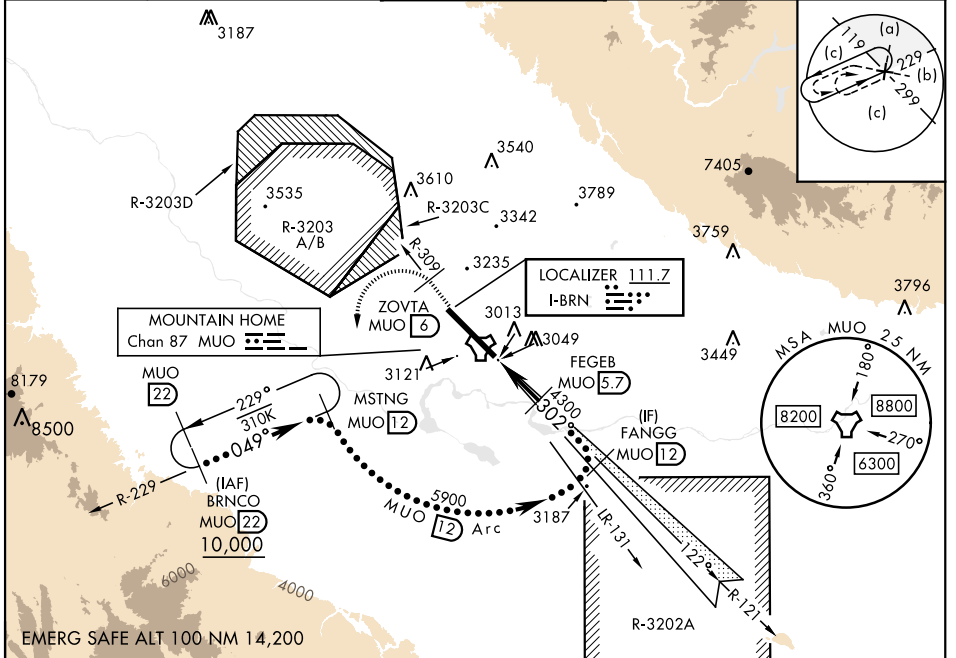


HI-ILS or LOC Y RWY 30

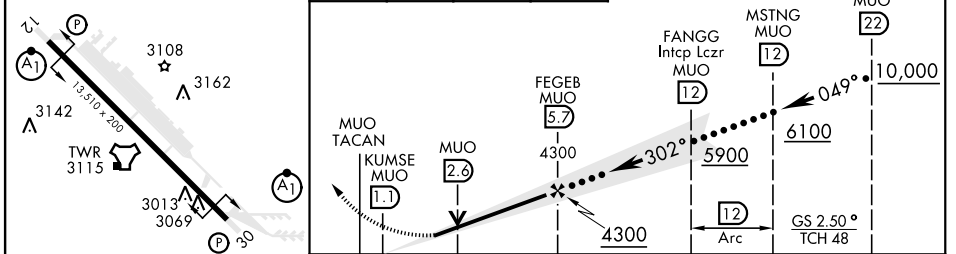
LOC I-BRN 111.7	APCH CRS 302°	Rwy Idg 13,510 TDZE 2996 Arprt Elev 2996	[USAF]	MOUNTAIN HOME AFB (KMUO)
---------------------------	-------------------------	---	--------	--------------------------

RADAR or DME required.	ALSIF-1 	MISSED APPROACH: Climb to 10,000 via MUO R-309 to ZOVRTA/6 DME, turn left and intcp MUO R-229 to MSTNG/12 DME and hold. Continue climb in hold to 10,000.
------------------------	-------------	---

ATIS 273.5	MOUNTAIN HOME APP CON 124.8 259.1	MOUNTAIN HOME TOWER 133.85 253.5	GND CON 120.5 275.8	CLNC DEL 127.1 290.425
----------------------	---	--	-------------------------------	----------------------------------



ELEV 2996	TDZE 2996	10,000 MUO R-309	ZOVTA MUO 6	MUO R-229	MSTNG MUO 12	VGSI and ILS glidepath not coincident (VGSI Angle 2.50/TCH 40).
-----------	-----------	---------------------	-------------	-----------	--------------	---



CATEGORY	C	D	E
S-ILS 30 *	3246/40	250 (300-¾)	
S-LOC 30 **	3460/50	464 (500-1)	
C CIRCLING ***	3560-1½ 564 (600-1½)	3560-2 564 (600-2)	3700-2½ 704 (800-2½)

HI-ILS or LOC Y RWY 30

NW-1, 20 MAR 2025 to 17 APR 2025

NW-1, 20 MAR 2025 to 17 APR 2025