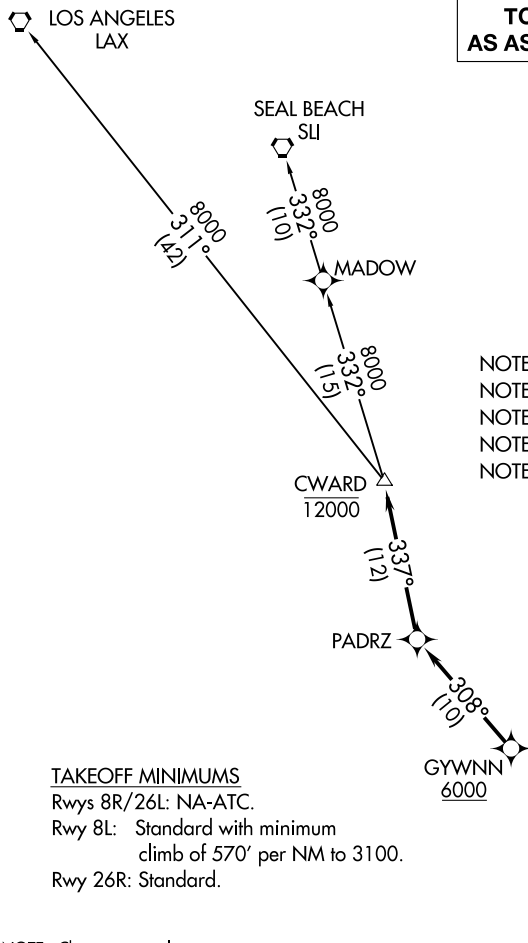


**TOP ALTITUDE:  
AS ASSIGNED BY ATC**

ATIS  
132.35  
BROWN TOWER\*  
128.25 225.4  
SOCAL DEP CON  
119.6 363.1



NOTE: RADAR required.  
NOTE: RNAV 1.  
NOTE: GPS or DME/DME/IRU required.  
NOTE: Turbojet or turboprop only.  
NOTE: Tower En Route control only.

**TAKEOFF MINIMUMS**

Rwys 8R/26L: NA-ATC.  
Rwy 8L: Standard with minimum  
climb of 570' per NM to 3100.  
Rwy 26R: Standard.

NOTE: Chart not to scale.

**DEPARTURE ROUTE DESCRIPTION**

TAKEOFF RUNWAY 8L: Climbing left turn heading 280° to 2900, expect vectors to cross GYWNN at or above 6000, then on track 308° to PADRZ, then on track 337° to cross CWARD at or below 12000, thence. . . .  
TAKEOFF RUNWAY 26R: Climbing right turn heading 280° to 2300, expect vectors to cross GYWNN at or above 6000, then on track 308° to PADRZ, then on track 337° to cross CWARD at or below 12000, thence. . . .  
. . . .on transition. Maintain ATC assigned altitude. Expect filed altitude 10 minutes after departure.

LOS ANGELES TRANSITION (CWARD2.LAX)  
SEAL BEACH TRANSITION (CWARD2.SLI)

SW-3, 20 MAR 2025 to 17 APR 2025

SW-3, 20 MAR 2025 to 17 APR 2025