

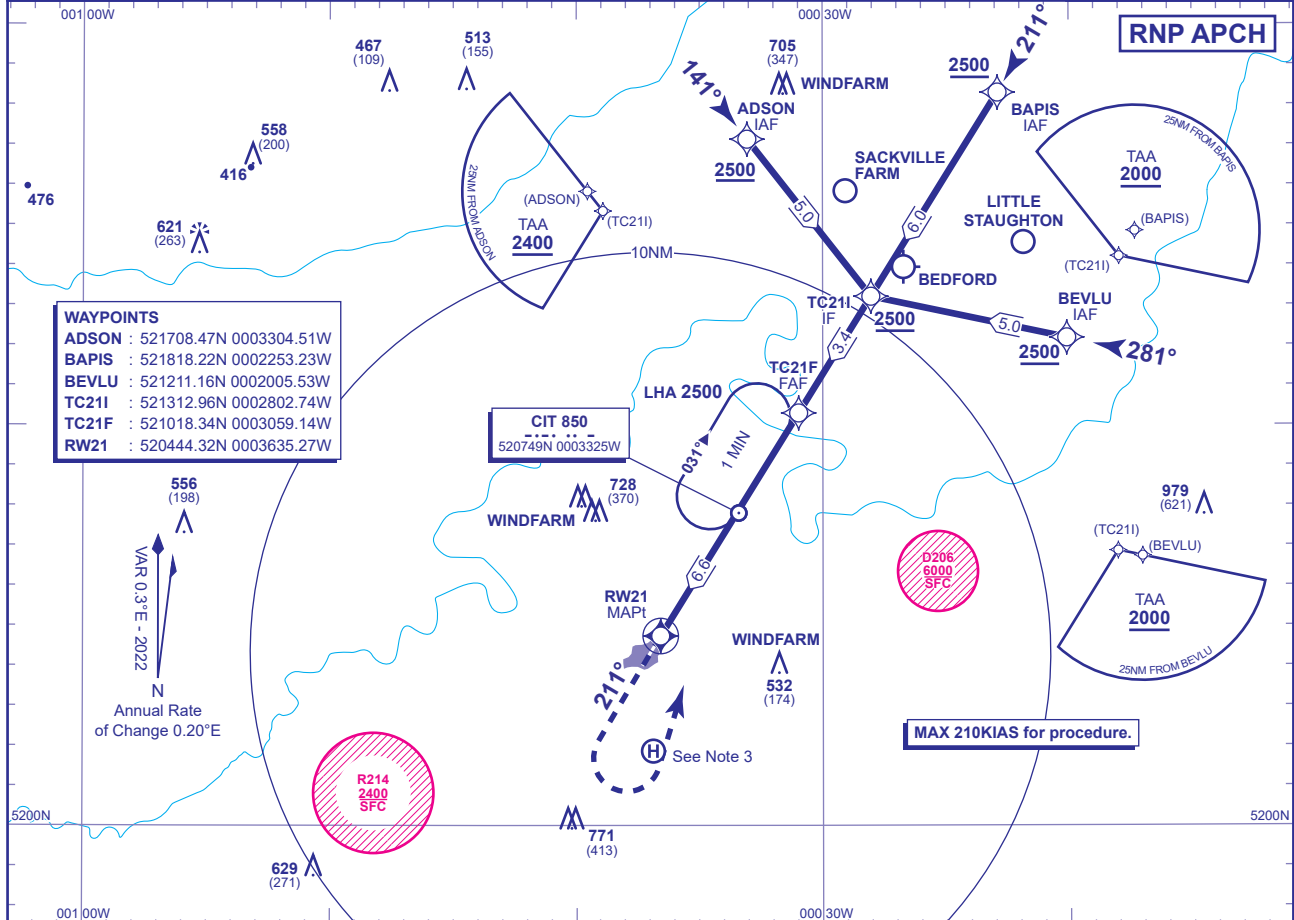
INSTRUMENT APPROACH CHART - ICAO

CRANFIELD
RNP
RWY 21
 (ACFT CAT A,B,C)



APP	122.855	CRANFIELD APPROACH	AD ELEVATION	360
TWR	134.930, 122.855	CRANFIELD TOWER	THR ELEVATION	358
			OBSTACLE ELEVATION	979 AMSL (621) (ABOVE THR)
			BEARINGS ARE MAGNETIC	

TRANSITION ALTITUDE
6000



WAYPOINTS

ADSON : 521708.47N 0003304.51W
 BAPIS : 521818.22N 0002253.23W
 BEVLU : 521211.16N 0002005.53W
 TC211 : 521312.96N 0002802.74W
 TC21F : 521018.34N 0003059.14W
 RW21 : 520444.32N 0003635.27W

556 (198)
 558 (200)
 416
 621 (263)
 476
 VAR 0.3°E - 2022
 N
 Annual Rate of Change 0.20°E

CIT 850
 520749N 0003325W

R214
 2400
 SFC

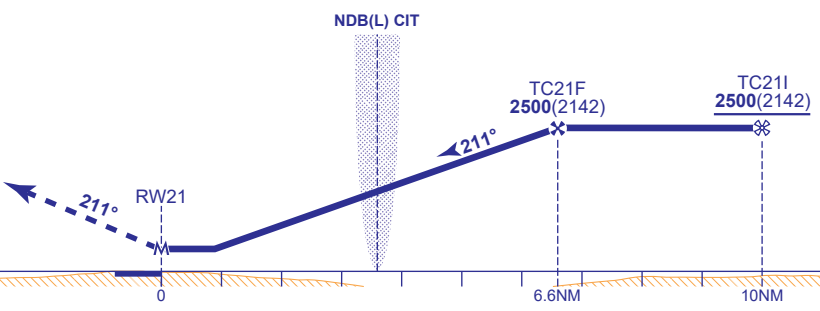
D206
 6000
 SFC

MAX 210KIAS for procedure.

RECOMMENDED PROFILE Gradient 5.2%, 320FT/NM

NM	6	5	4	3	2	1
ALT(HGT)	2320(1962)	2000(1642)	1680(1322)	1370(1012)	1050(692)	730(372)

MAPt (LNAV): RW21
 Climb straight ahead to 1500, then climbing left turn to 2500 to join the NDB(L) CIT hold.



Aircraft Category		A	B	C	Rate of descent	G/S KT	160	140	120	100	80
OCA (OCH)	LNAV	690(332)	690(332)	690(332)		FT/MIN	850	740	640	530	420
VM(C)OCA (OCH AAL)	Total Area	800(440)	970(610)	1150(790)							

NOTE 1 CIT NDB(L) hold restrictions: MAX holding level 5000, MAX 180KIAS.
NOTE 2 Missed Approach Procedure uses conventional navigation aids and is not available without NDB(L) CIT.
NOTE 3 Occasional helicopter activity at Helimech Helipad (520152N 0003653W).

CHANGE (3/25): NOTE 4 REMOVED.