

STANDARD DEPARTURE CHART-INSTRUMENT

RJCB / OBIHIRO

SID

NODUK TWO DEPARTURE

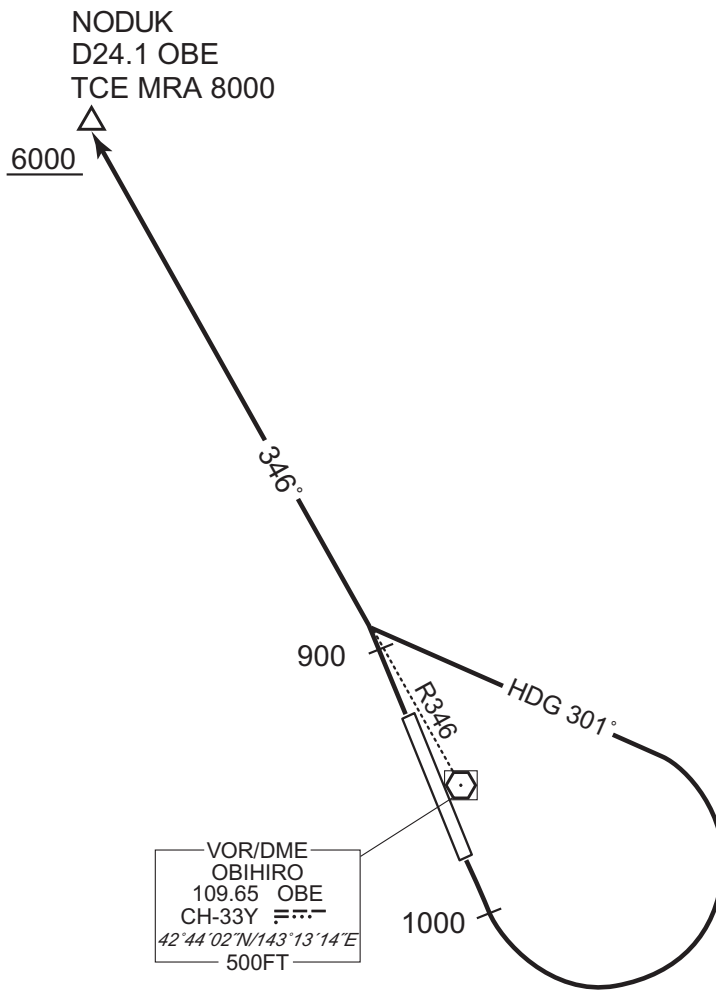
RWY 17 : Climb RWY HDG to 1000FT, turn left HDG 301° to intercept and proceed...

RWY 35 : Climb RWY HDG to 900FT, ...

...via OBE R346 to NODUK.

Cross NODUK at or above 6000FT.

Note RWY 35 : 5.0% climb gradient required up to 1500FT.



CHANGE : PROC renamed. PROC course.