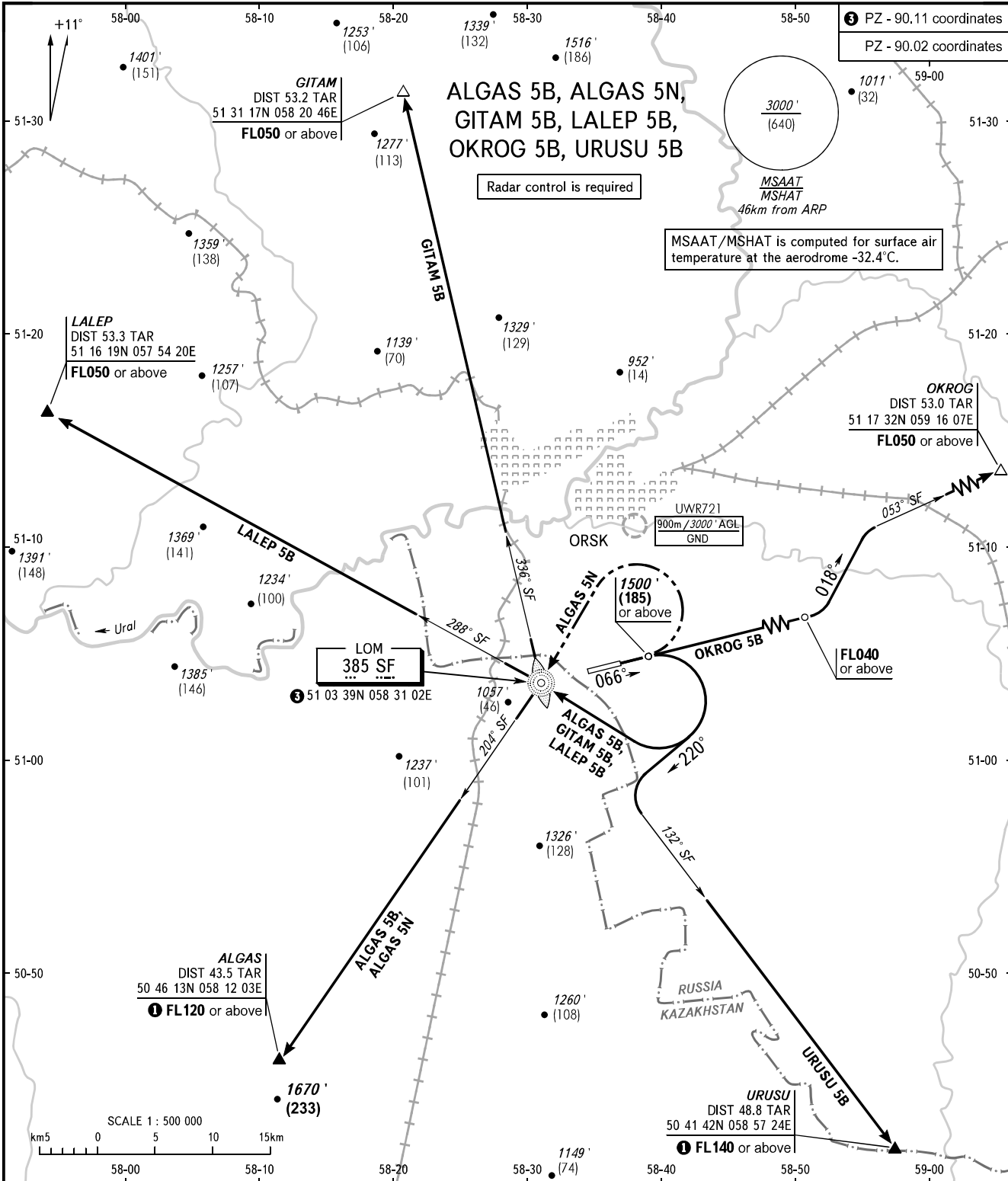


STANDARD DEPARTURE CHART
INSTRUMENT (SID) - ICAO

ORSK, RUSSIA
ORSK
RWY 07

TRANSITION ALT: 3000'
TRANSITION HGT: (640)



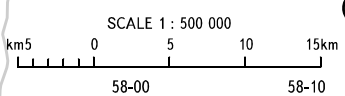
③ PZ - 90.11 coordinates
PZ - 90.02 coordinates

Radar control is required

MSAAT/MSHAT is computed for surface air temperature at the aerodrome -32.4°C.

LOM
385 SF
③ 51 03 39N 058 31 02E

UWR721
900m / 3000' AGL
GND



TOWER 122.700

WARNING:

- The minimum climb gradients are as follows (required due to the airspace limitation):
 - 4.3% up to FL050 for SID OKROG 5B;
 - 4.7% up to FL120 for SID ALGAS 5N ②;
 - 3.7% up to FL120 for SID ALGAS 5B ②;
 - 6.5% up to FL140 for SID URUSU 5B ②.
- Turn before passing DER is PROHIBITED.
 - ① Lower flight levels are AVBL by coordination with ATS unit.
 - ② When flight levels below FL120 are prohibited for passing ALGAS and when flight levels below FL140 are prohibited for passing URUSU.

BEARINGS AND TRACKS ARE MAGNETIC
ALTITUDES IN FEET
HEIGHTS IN METRES
ELEVATIONS IN FEET AND METRES
DISTANCES IN KILOMETRES

Alt set: -QNH(QFE on req);
-hPa(mm on req).

CHANGE: Heading, MSAAT/MSHAT