

STANDARD DEPARTURE CHART -INSTRUMENT

RJNA / NAGOYA

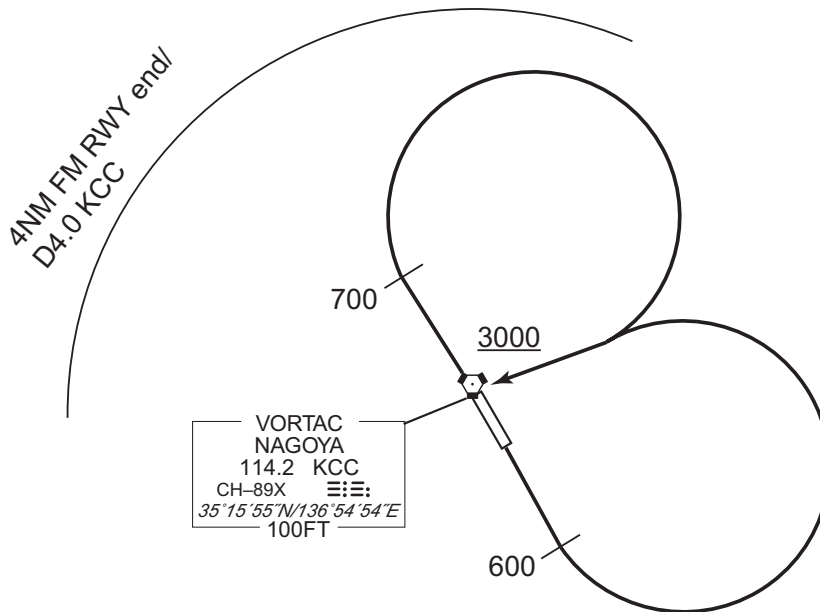
SID

NAGOYA EAST REVERSAL ONE DEPARTURE

RWY16 : Climb RWY HDG to 600FT, turn left, direct to KCC VORTAC.
Cross KCC VORTAC at or above 3000FT.

RWY34 : Climb RWY HDG to 700FT, turn right within 4NM from RWY end/KCC 4.0DME,
direct to KCC VORTAC.
Cross KCC VORTAC at or above 3000FT.

Note RWY16 : 5.0% climb gradient required up to 600FT.
RWY34 : 5.0% climb gradient required up to 700FT.



CHANGE : Description of PROC name.

STANDARD DEPARTURE CHART -INSTRUMENT

RJNA / NAGOYA

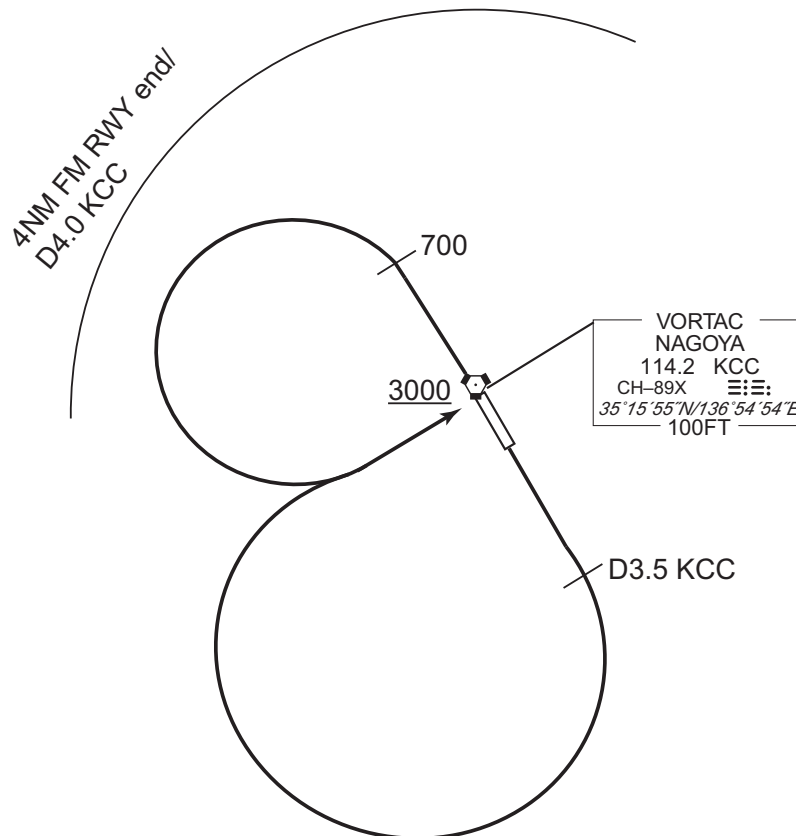
SID

NAGOYA WEST REVERSAL ONE DEPARTURE

RWY16 : Climb RWY HDG to KCC 3.5DME, turn right, direct to KCC VORTAC.
Cross KCC VORTAC at or above 3000FT.

RWY34 : Climb RWY HDG to 700FT, turn left within 4NM from RWY end/KCC 4.0DME,
direct to KCC VORTAC.
Cross KCC VORTAC at or above 3000FT.

Note RWY16 : 5.0% climb gradient required up to 700FT.
OBST ALT 551FT located at 1.9NM 215° FM end of RWY16.
RWY34 : 5.0% climb gradient required up to 700FT.



CHANGE : Description of PROC name.