

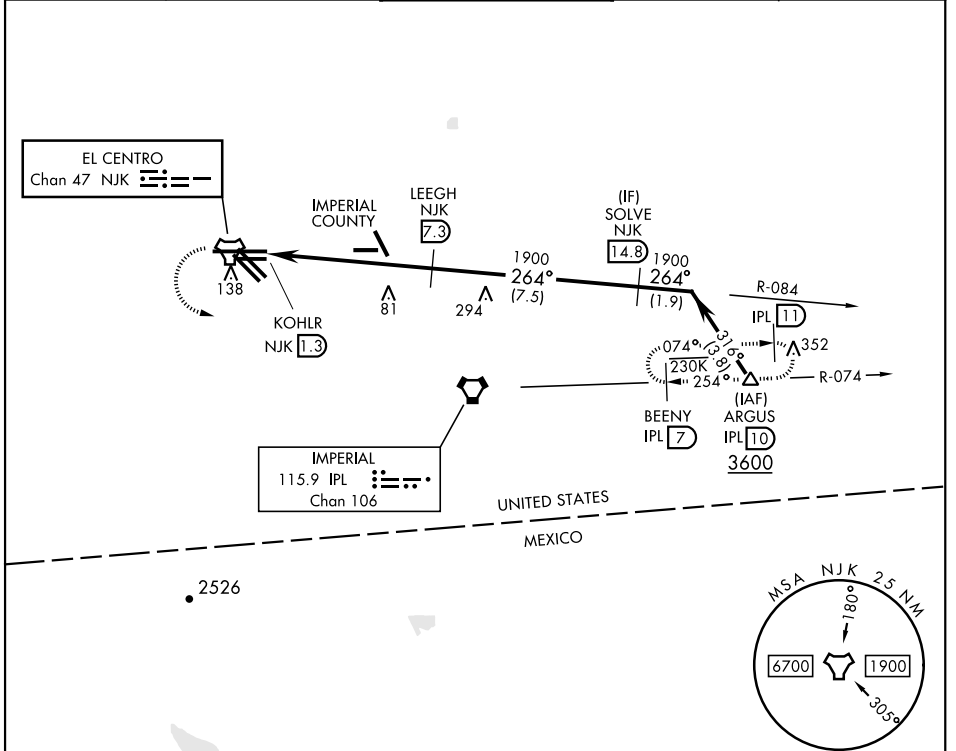
TACAN RWY 26

TACAN Chan 47	APCH CRS 264°	Rwy Idg TDZE Arpt Elev 9503 -46 -42
-------------------------	-------------------------	---

[USN]

EL CENTRO NAF (VRACIU FLD) (KNJK)

<p>▼ Circling to Rwy 30 not authorized at night.</p>		<p>MISSED APPROACH: Climb to 500, then climbing left turn to 2400 direct IPL VORTAC. Then direct BEENY via IPL R-074 and hold.</p>		
<p>ATIS ★ 269.275</p>	<p>APP CON/DEP CON 128.55 292.2</p>	<p>TOWER ★ 119.1 360.2</p>	<p>GND CON 121.9 254.35</p>	<p>CLNC DEL 340.2</p>

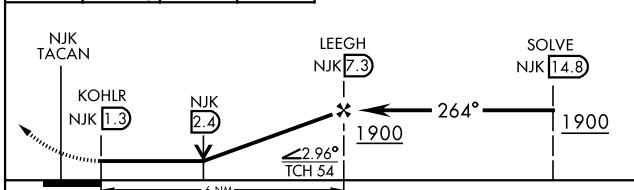


SW-3, 20 MAR 2025 to 17 APR 2025

SW-3, 20 MAR 2025 to 17 APR 2025

EMERG SAFE ALT 100 NM 17,000

500	2400	IPL R-074	BEENY IPL 7
-----	------	-----------	-------------



CATEGORY	A	B	C	D
S-26	380-1 426 (500-1)	380-1¼ 426 (500-1¼)		
CIRCLING	480-1 522 (600-1)	480-1½ 522 (600-1½)	520-2 562 (600-2)	

ELEV -42	TDZE -46
----------	----------

This section contains the tower and runway layout for EL CENTRO NAF (VRACIU FLD). It shows the tower (TWR) and the runway (RWY 26) with a width of 9503 x 200. Key details include:

- Runway:** RWY 26, 9503 x 200.
- Obstacles:** Obstacles are shown at 294, 352, and 230K.
- Navigation Aids:** R-084 and R-074 are shown.
- Other Airports:** KOHLR (NJK 1.3) and NJK 2.4 are also indicated.

EL CENTRO, CALIFORNIA 32°50'N-115°40'W EL CENTRO NAF (VRACIU FLD) (KNJK)

Orig 13JUL23

TACAN RWY 26

HIRL Rwy 8-26, 12-30