

APRON WEST / ACL ELEV 350 FT  
General aviation APRON ELEV 349 FT

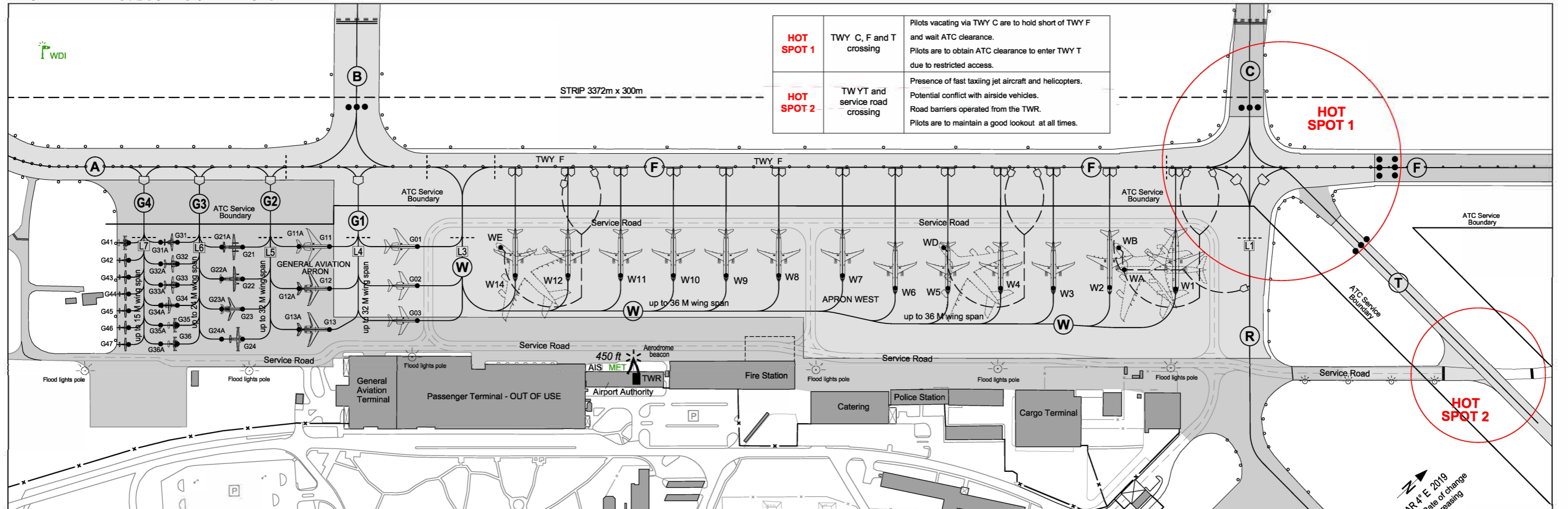
ZAGREB ATIS 124.575

ZAGREB TOWER 118.300

ZAGREB GROUND 121.850

ZAGREB / Franjo Tudman  
CROATIA

AIRCRAFT PARKING / DOCKING CHART - ICAO



<b>HOT SPOT 1</b>	TWY C, F and T crossing	Pilots vacating via TWY C are to hold short of TWY F and wait ATC clearance. Pilots are to obtain ATC clearance to enter TWY T due to restricted access.
<b>HOT SPOT 2</b>	TWYT and service road crossing	Presence of fast taxiing jet aircraft and helicopters. Potential conflict with airside vehicles. Road barriers operated from the TWR. Pilots are to maintain a good lookout at all times.

TAXIING AND PARKING RESTRICTIONS AND NOTES - APRON WEST AND GENERAL AVIATION:

- EXITING FROM PARKING POSITION "G01" RESTRICTION:**
- ACFT exit from G01 is allowed only when ACFT may continue on its way to TWY "F" and enter the TWY "F" without stopping at the intermediate holding position (IHP) "L3".
  - TXL W must be used for ACFT exit from PSNs "G01" to "G03".
- TAXIING ON APRON:**
- Parking position number for inbound traffic is provided by ATC.
  - Adhere strictly to the yellow taxi guide line and Marshalling signals. For other restrictions adhere strictly to Zagreb TWR instructions and Follow Me guidance.
  - ACFT is not allowed to enter the parking position if Marshaller is not present.
  - ACFT Code Letter "F" has to await Follow Me when entering part of TWY "F" from TWY "C" to TWY "B" for taxiing to parking position "WB", "WD" & "WE".
  - In order to enter PSN WA, ACFT must turn from TWY "F" to TXL "R".
  - TXL "W" from PSN "W1" to PSN "W14" up to 36,0 m wing span.
  - ACFT exit from PSN "W1" to "W14" for ACFT code letter "C" is mandatory in the direction to the west.
  - ACFT exit from PSNs "W1" & "W2" for ACFT code letter "D" and "E" is mandatory by using push-back.
  - Follow Me guidance is mandatory on TWY "R" for self-maneuvring ACFT.
  - The movement of two or more ACFT on the apron at the same time is allowed in conditions other than LVP, when the ACFT are at a safe distance from each other.
  - Mandatory notification of stand position number to ATC with start up request.

Helicopter parking:

All PSNs can be used for helicopter parking considering helicopter dimensions. Zagreb TWR instructions and Follow Me guidance shall be followed for ground taxi or air taxi of helicopters between TWYs and parking positions.

TAXIING AND PARKING RESTRICTIONS AND NOTES - GENERAL AVIATION APRON:

- Taxiing on Apron**
- TXL "G1" must be used for enter to PSNs "G01" to "G03" & PSNs "G11A" to "G13A".
  - TXL "G2" must be used for enter to PSNs "G11" to "G13" & PSNs "G21A" to "G24A".
  - TXL "G3" must be used for enter to PSNs "G21" to "G24" & PSNs "G31A" to "G36A".
  - TXL "G4" must be used for enter to PSNs "G31" to "G36", PSNs "G41" to "G47".
  - Departing ACFT must stop at intermediate holding position (IHP) on taxiway (TXL) and wait for further taxi instructions from Zagreb TWR:
    - IHP "L4" on TXL "G1",
    - IHP "L5" on TXL "G2",
    - IHP "L6" on TXL "G3" &
    - IHP "L7" on TXL "G4".
  - PSNs "G41" to "G47" are Push-In / Taxi-Out.
  - PSNs "G01" to "G03", "G11" to "G13", "G11A" to "G13A", "G21" to "G24", "G21A" to "G24A", "G31" to "G36", "G31A" to "G36A" are self-maneuvring via designated TXL.

Parking Positions (PSN)	
PSN: W1 to W14 (for ACFT Code Letter "C") & PSN: WA, WB, WD & WE	Taxi-in / Taxi Out
PSN: W1 & W2	For ACFT Code Letter "D" and "E" Taxi In / Push Back.
PSN: WB, WD & WE	ACFT CODE LETTER "F"
PSN: W1 & PSN No: WA	ACFT CODE LETTER "E"
PSN: W2	ACFT CODE LETTER "D"
PSN: W3 to W14	ACFT CODE LETTER "C"
PSN: W1	Maximum Wing Span 52M & Maximum Length 55M
PSN: W2	Maximum Wing Span 42M & Maximum Length 55M
PSN: W3 to W7	Maximum Wing Span 36M & Maximum Length 55M
PSN: W8 to W14	Maximum Wing Span 36M & Maximum Length 45M
PSN: WA	Maximum Wing Span 64,8M & Maximum Length 74,77M
PSN: WB, WD & WE	Maximum Wing Span 88,4M & Maximum Length 84M

Restrictions for some parking positions:	
When PSNs "WA", "WB", "WD" & "WE" are in use, the following positions must be vacated or with limitation:	
When PSN "WA" is in use, PSNs "WB", "W1" & "W2" must be vacated.	
When PSN "WB" is in use, PSNs "WA", "W1" & "W2" must be vacated.	
When ACFT is entering to PSN "WD", PSN "W3" must be vacated.	
When PSN "WD" is in use, PSNs "W4", "W5" & "W6" must be vacated.	
When PSN "WE" is in use, PSNs "W11", "W12" & "W14" must be vacated.	
When PSN "WD" is in use, ACFT exit from PSN "W3", is mandatory by using push-back.	
When PSN "WE" is in use, ACFT exit from PSNs "W10" - "W1", is mandatory by using push-back.	
When PSN "W1" and/or "W2" are/is in use, PSNs "WA" and "WB" must be vacated.	
When PSN "W3" and/or "W4", and/or "W5" and/or "W6" are/ is in use, PSN "WD" must be vacated.	
When PSN "W11" and/or "W12", and/or "W14" are/is in use, PSN "WE" must be vacated.	

PARKING POSITIONS AND INS / REFERENCE POINTS (WGS-84)								
GENERAL AVIATION APRON			APRON WEST					
PSN	INS COORDINATES		PSN	INS COORDINATES		PSN	INS COORDINATES	
G01	454357.31N	0160329.64E	G31	454352.97N	0160322.81E	WA	454409.89N	0160350.04E
G02	454356.54N	0160330.67E	G31A	454352.66N	0160322.33E	WB	454410.22N	0160349.31E
G03	454355.86N	0160331.59E	G32	454352.55N	0160323.37E	WD	454407.00N	0160344.40E
G11	454355.69N	0160327.18E	G32A	454352.24N	0160322.91E	WE	454358.83N	0160332.00E
G11A	454355.13N	0160326.32E	G33	454352.13N	0160323.93E	W1	454410.46N	0160351.99E
G12	454354.87N	0160328.29E	G33A	454351.83N	0160323.46E	W2	454409.28N	0160350.10E
G12A	454354.31N	0160327.43E	G34	454351.73N	0160324.47E	W3	454408.22N	0160348.55E
G13	454354.06N	0160329.36E	G34A	454351.42N	0160324.00E	W4	454407.25N	0160347.07E
G13A	454353.50N	0160328.51E	G35	454351.34N	0160324.99E	W5	454406.28N	0160345.60E
G21	454354.08N	0160324.76E	G35A	454351.04N	0160324.52E	W6	454405.31N	0160344.12E
G21A	454353.70N	0160324.17E	G36	454350.98N	0160325.48E	W7	454404.58N	0160342.31E
G22	454353.45N	0160325.60E	G36A	454350.67N	0160325.01E	W8	454403.41N	0160340.52E
G22A	454353.07N	0160325.01E	G41	454352.06N	0160321.46E	W9	454402.44N	0160339.05E
G23	454352.86N	0160326.39E	G42	454351.72N	0160321.92E	W10	454401.47N	0160337.57E
G23A	454352.48N	0160325.81E	G43	454351.39N	0160322.36E	W11	454400.49N	0160336.09E
G24	454352.27N	0160327.18E	G44	454351.06N	0160322.80E	W12	454359.52N	0160334.62E
G24A	454351.89N	0160326.59E	G45	454350.73N	0160323.25E	W14	454358.55N	0160333.14E
			G46	454350.40N	0160323.69E			
			G47	454350.07N	0160324.13E			



CHANGE: FIRE STATION LOCATION

OVA STRANICA JE NAMJERNO OSTAVLJENA PRAZNA  
THIS PAGE INTENTIONALLY LEFT BLANK