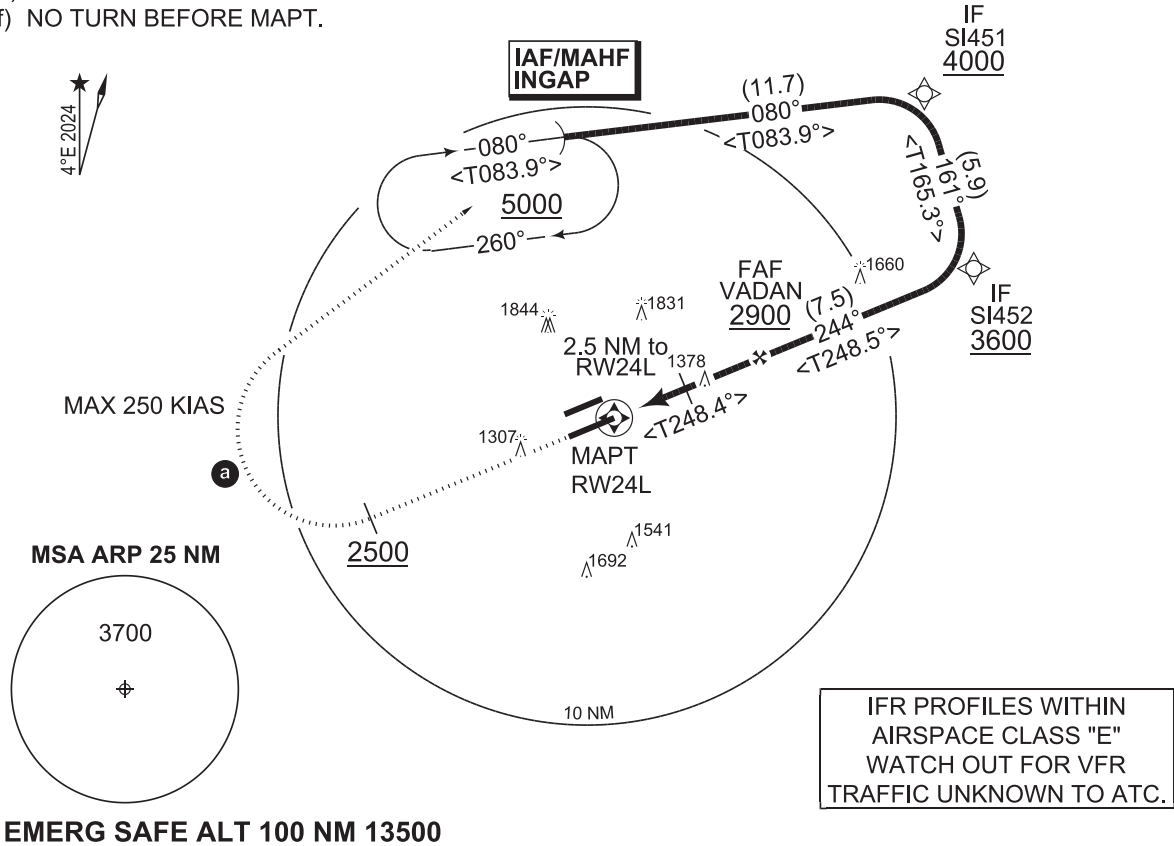


**PANS-OPS INSTRUMENT APPROACH CHART** **RNAV (GNSS) RWY 24L**  
**INGOLSTADT/MANCHING (ETSI)**

MUENCHEN RADAR 242.200	INGO RADAR 282.000 120.605 125.580		INGO TOWER 376.800 125.255		INGO ATIS 118.865
APP COURSE 244°	FAF ALT 2900	GS 3.1°	MDA <b>See CAT</b>	TDZE 1197	ALS-LENGTH 900 M
				LDA 9646	

**NOTE:**

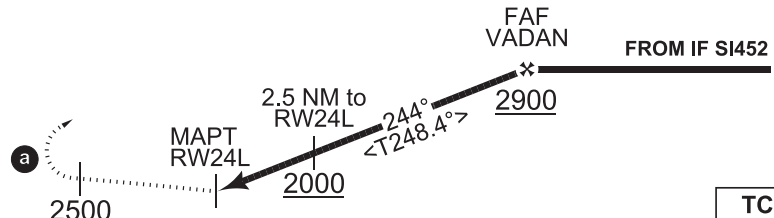
- a MISSED APCH TURN LIMITED TO 250 KIAS.
- b MISSED APCH: CLIMB WITH MINIMUM 3% (183 FT/NM) FOR ATC REASON.
- c CIRCLING NOT AUTHORIZED NORTH OF RWY 06L/24R.
- d CAT B: CIRCLING SPEED LIMITED TO 130 KIAS MAX.
- e GPS QUALIFICATION REQUIRED.
- f) NO TURN BEFORE MAPT.



**MISSED APPROACH (b)**

Climb on track 244°, when passing 2500 ft turn right direct **INGAP**. Climb to 5000 ft and enter holding.  
 [M244, A2500+; R] - **INGAP** [A5000+]

<b>TA 5000</b>	Distance THR	5	4	3	2	1
	Altitude	2870	2540	2210	1880	1550



TDZE 1197	← 5.1 →	CAT II/III <input checked="" type="checkbox"/>
-----------	---------	--

CATEGORY	A	B	C	D	E
GNSS 24L	<b>1570</b> - 1.0 373 (400-1.0/1.5)		<b>1570</b> - 1.0 373 (400-1.0/1.7)		<b>1610</b> - 1.2 413 (500-1.2/1.9)
<b>c</b> CIRCLING	<b>1700</b> - 2.3 497 (500-2.3)	<b>d</b> <b>1710</b> - 2.4 507 (600-2.4)	<b>2480</b> - 5.0 1277 (1300-5.0)	<b>2630</b> - 5.0 1427 (1500-5.0)	

**RNAV (GNSS) RWY 24L** **INGOLSTADT/MANCHING (ETSI)**

48°42.94'N  
 011°32.02'E

CHANGE: VAR: TRACK (423/23)  
MIPS

ZentLufOp 22 FEB 2024