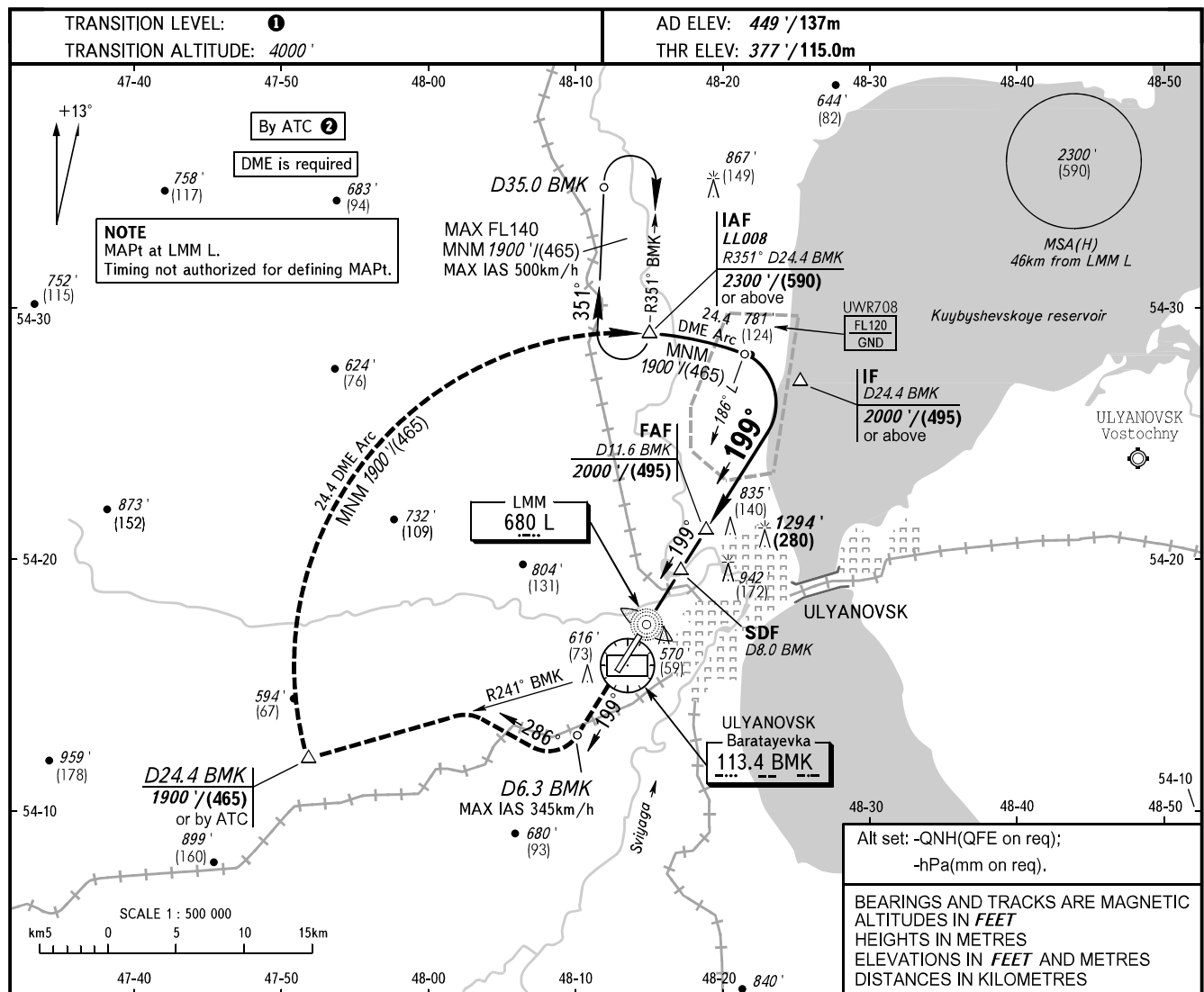


**INSTRUMENT
APPROACH
CHART - ICAO**

RADAR 120.800
PRECISION 120.400

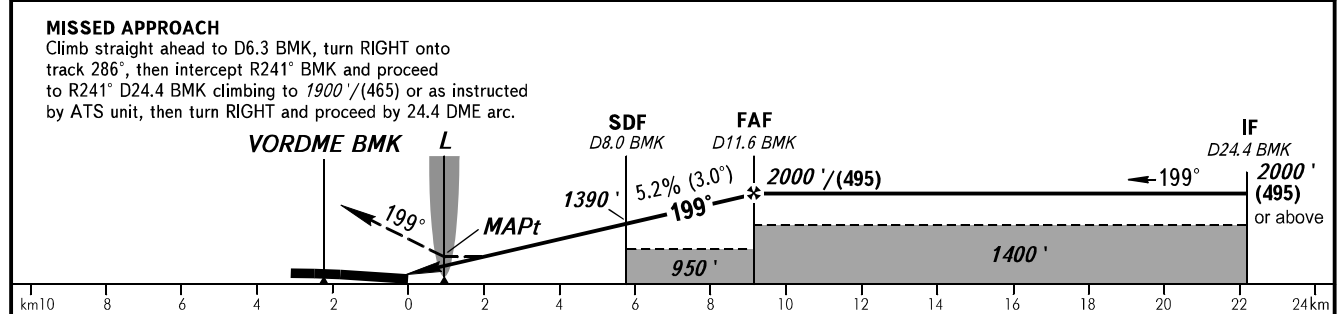
**ULYANOVSK, RUSSIA
BARATAYEVKA
NDB Y RWY 20**



Alt set: -QN(H)(QFE on req);
-hPa(mm on req).

BEARINGS AND TRACKS ARE MAGNETIC
ALTITUDES IN FEET
HEIGHTS IN METRES
ELEVATIONS IN FEET AND METRES
DISTANCES IN KILOMETRES

DME BMK	5.0	7.0	9.0	11.0
ALTITUDE	880'	1220'	1560'	1900'



OCA(H)		A	B	C	D	1 TRANSITION LEVEL: - FL050 when QNH is 1013 hPa (760mm mercury column) or above; - FL060 when QNH is 977 hPa (733mm mercury column) or above, but less than 1013 hPa (760mm mercury column); - FL070 when QNH is less than 977 hPa (733mm mercury column). 2 When restricted area UWR708 is active. 3 Visual manoeuvring east of the AD is PROHIBITED.					
Straight-in	NDB (LMM)	780' (410')	780' (410')	780' (410')	780' (410')						
	Approach	950' (570')	950' (570')	950' (570')	950' (570')						
Circling		950' (570')	1010' (560')	1340' (890')	1340' (890')						
GROUND SPEED		km/h	150	180	210	240	270	300	330	360	390
RATE OF DESCENT		m/s	2.2	2.6	3.0	3.5	3.9	4.3	4.8	5.2	5.6
		ft/min	427	512	597	682	768	853	938	1024	1109

CHANGE: Heading, HGT