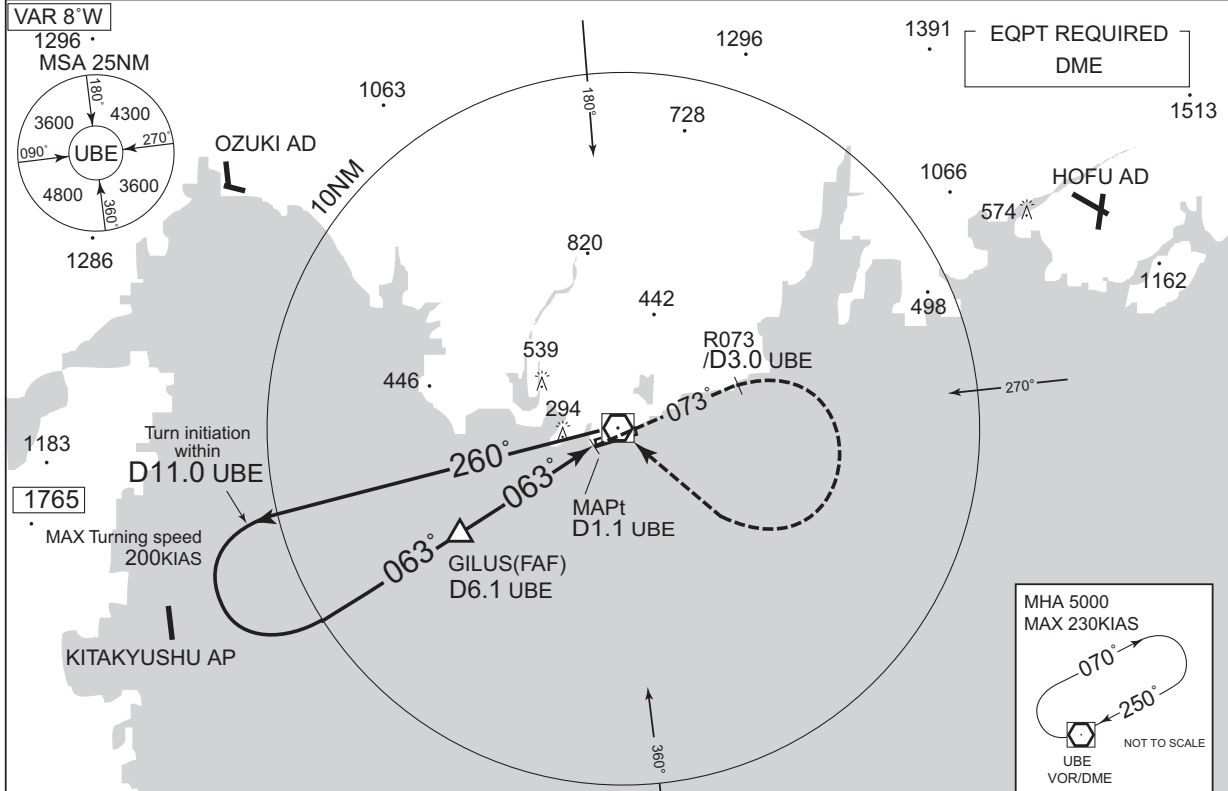


INSTRUMENT APPROACH CHART

RJDC / YAMAGUCHI-UBE

VOR RWY07

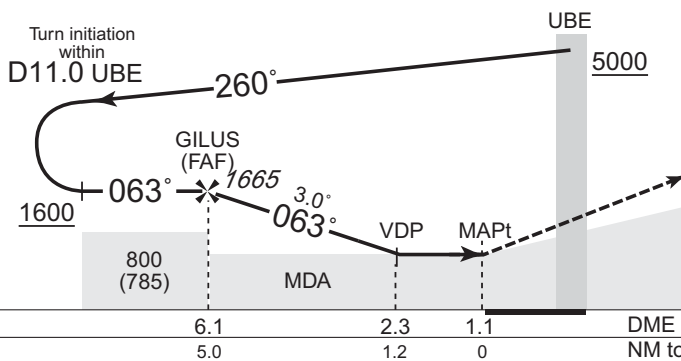
TSUIKI APP 119.225 – 315.9	UBE VOR/DME 110.8 UBE CH-45X $\equiv \equiv \equiv$ 33°56'08"N/131°17'01"E	UBE RADIO 118.05 – 126.2	RADAR AVBL CALL TSUIKI APP
-------------------------------	---	-----------------------------	----------------------------------



CHANGE : VAR. MSA(BTN 180° and 270°). Missed APCH PROC. Missed APCH climb gradient MNM added.

NM to UBE	FAF	6	5	4	3	MAPt
ALT (3.0° APCH Path)	1665	1646	1328	1009	691	-

GILUS(FAF) : 335245.50N/1311057.85E



**MISSED APPROACH**

Climb via UBE R073 to 3.0DME, turn right, direct to UBE VOR/DME and hold at 5000FT. Contact TSUIKI APP.

Timing not authorized for defining the MAPt.

Missed APCH climb gradient MNM 5.0%

MINIMA                      THR elev. 23                      AD elev. 15

CAT	CIRCLING			
	MDA(H)	RVR/CMV	MDA(H)	VIS
A	450 (435)	900	450 (435)	1600
B		1000	470 (455)	
C				2400
D				

MINIMA with Missed APCH climb gradient of 2.5% are not established.  
Circling to SOUTH side of RWY only.