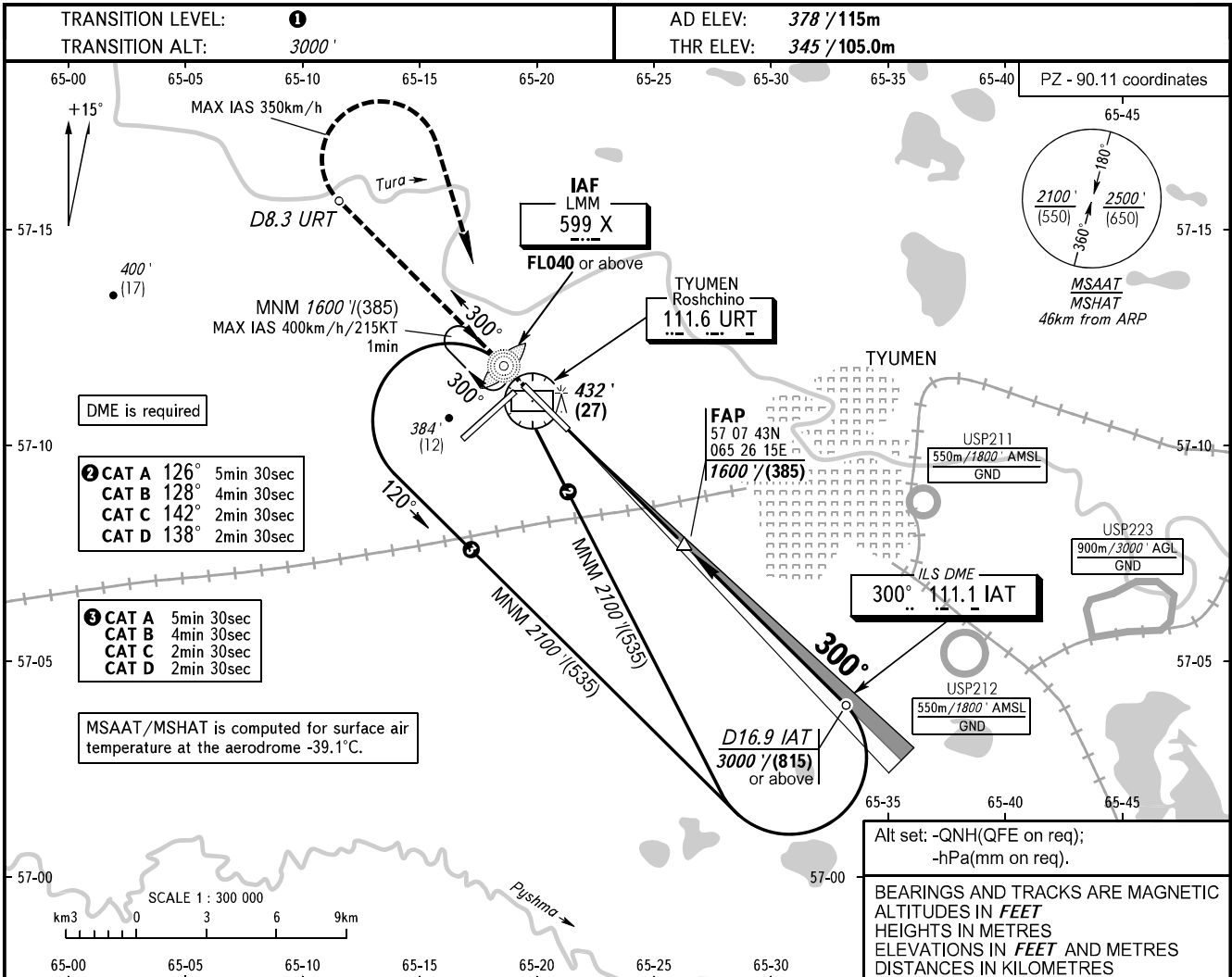


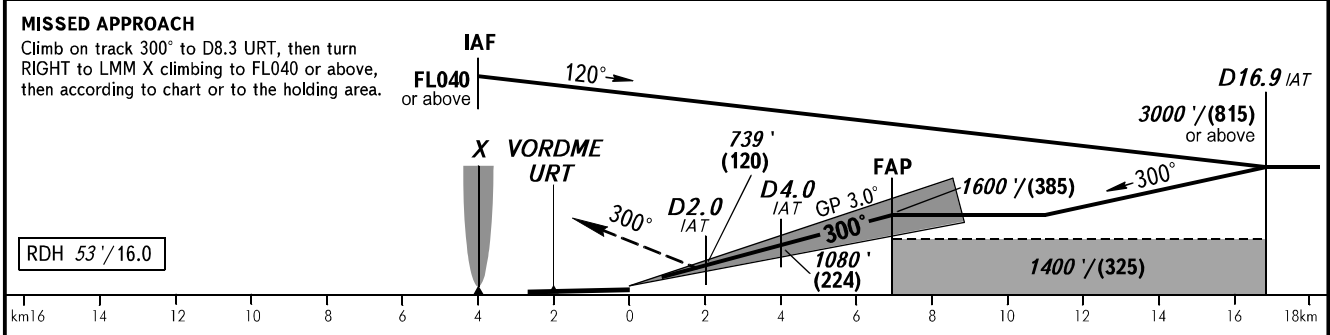
**INSTRUMENT
APPROACH
CHART - ICAO**

**TYUMEN, RUSSIA
ROSHCHINO
ILS X CAT I RWY 30**

RADAR **126.100**
START **118.200**



DME IAT	2.0	4.0	6.0	7.0
ALTITUDE	739'	1080'	1421'	1593'



GROUND SPEED	km/h	150	180	210	240	270	300	330	360	390	420	450
	m/s	2.2	2.6	3.1	3.5	3.9	4.4	4.8	5.2	5.7	6.1	6.6
RATE OF DESCENT	ft/min	433	512	610	689	768	866	945	1024	1122	1201	1299

1 **TRANSITION LEVEL:**
- FL040 when QNH is 1013 hPa (760mm mercury column) or above;
- FL050 when QNH is 977 hPa (733mm mercury column) or above, but less than 1013 hPa (760mm mercury column);
- FL060 when QNH is less than 977 hPa (733mm mercury column).

WARNING
Zero range of DME IAT is indicated at RWY 30 THR.