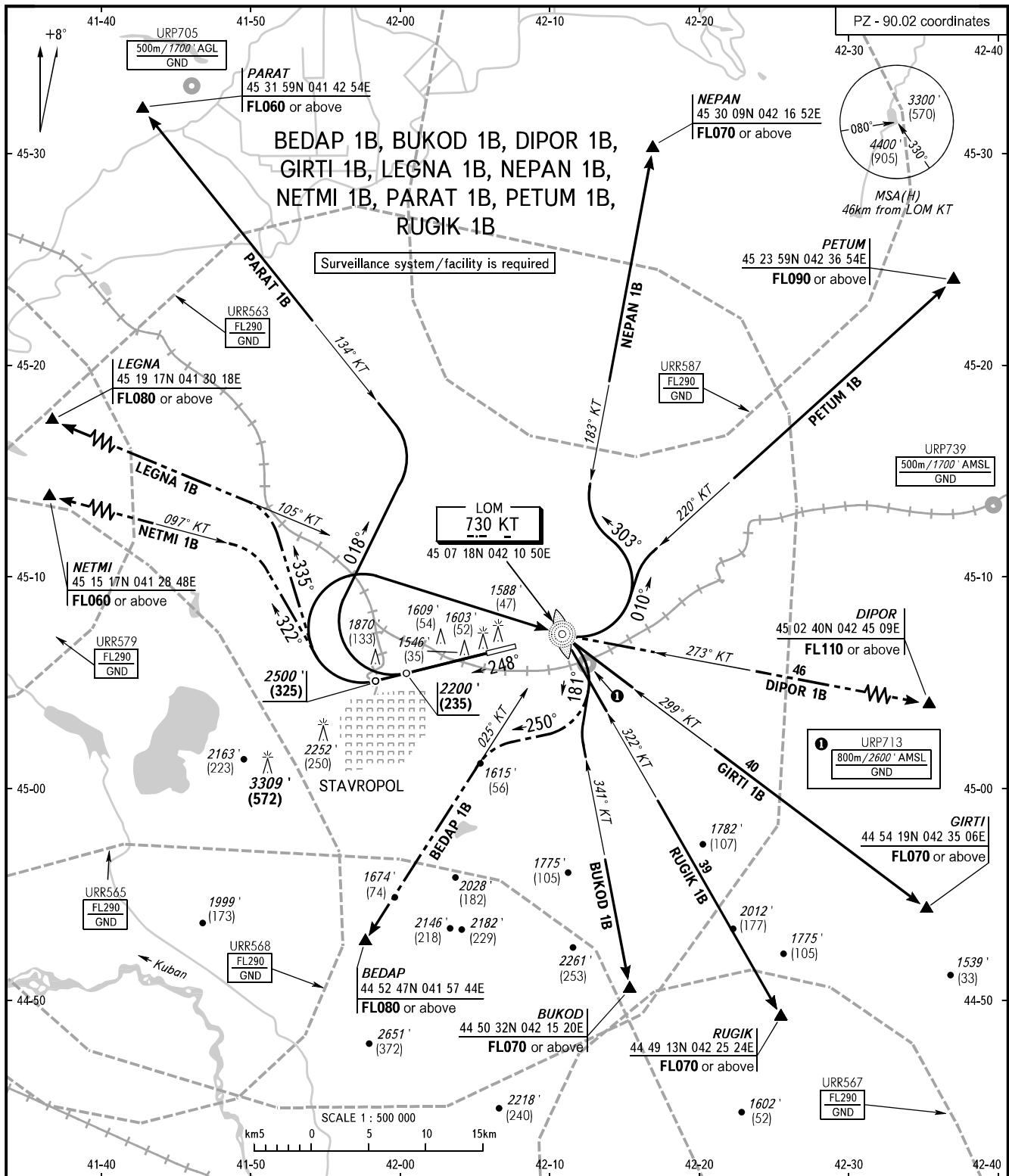


STANDARD DEPARTURE CHART
INSTRUMENT (SID) - ICAO

TRANSITION ALTITUDE: **5000'**
TRANSITION HEIGHT: **(1090)**

STAVROPOL, RUSSIA
SHPAKOVSKOYE
RWY 25



TOWER **120.900**
APPROACH **121.050**

NOTE
BUKOD 1B by ATC, when URR563, URR565, URR567 are active.
GIRTI 1B, PARAT 1B by ATC, when URR563 is active.
NEPAN 1B, PETUM 1B by ATC, when URR563, URR587 are active.
RUGIK 1B by ATC, when URR563, URR567 are active.

BEARINGS AND TRACKS ARE MAGNETIC
ALTITUDES IN **FEET**
HEIGHTS IN METRES
ELEVATIONS IN **FEET** AND METRES
DISTANCES IN KILOMETRES

Alt set: - QNH (QFE on req);
- hPa (mm on req).