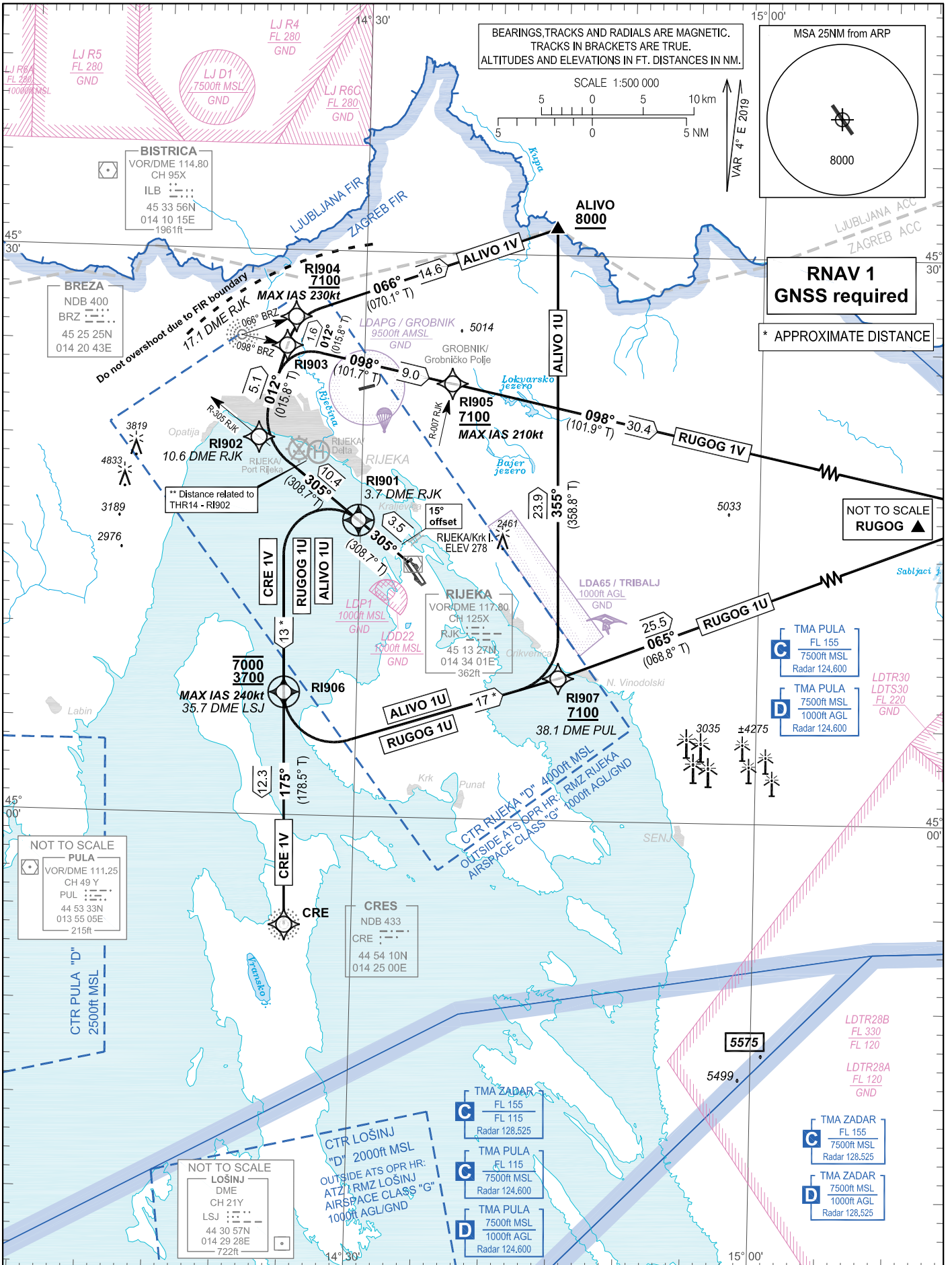


STANDARD DEPARTURE CHART -  
INSTRUMENT (SID) - ICAO

**TRANSITION ALTITUDE**  
10 000

RIJEKA TOWER 119.000  
PULA RADAR 127.675  
124.600

**RIJEKA / Krk I. (LDRI)**  
CRE 1V ALIVO 1U RUGOG 1U  
ALIVO 1V RUGOG 1V  
**RNAV RWY 32**



CHANGE: Glider activity zones LDA11 / ISTRA ZONA 1 and LDA12 / ISTRA ZONA 2 deleted; Water aerodrome RAB/Rab deleted; Heliport RIJEKA/Delta added.

## RIJEKA / Krk I. (LDRI)

## RNAV RWY 32

CRE 1V ALIVO 1U RUGOG 1U  
ALIVO 1V RUGOG 1V

## GENERAL INFORMATION AND REQUIREMENTS FOR ALL SIDS

- Calculation of the SIDs is based on an all-engines operative minimum net climb gradient of 3.3 per cent (201 ft/NM). Where a greater climb gradient for a specific SID (or part of SID) is necessary, this is indicated in the tabular description of the route.

- After take off, climb initially to 8000 ft. After passing 4000 ft, contact Pula Radar on 127.675 MHz.

**WARNING: Back-up conventional (NON-RNAV) procedure, in case of loss of RNAV 1 capability or RNAV system failure, below minimum radar vectoring altitude for RNAV SID CRE 1V only:**

Climb on track 305°. At 3.7 DME RJK turn LEFT climbing to intercept and follow QDM 175° CRE NDB to 35.7 DME LSJ. Cross 35.7 DME LSJ at or above 3700 ft AMSL, but at or below 7000 ft AMSL. After crossing 35.7 DME LSJ proceed via RNAV SID flight procedure filed in FPL or according to ATC instruction. MAX IAS 240 kt. MNM PDG 4.0% (243 ft/NM) until 35.7 DME LSJ.

**LDRI RNAV STANDARD INSTRUMENT DEPARTURE RWY 32**

## Proposed tabular description for navigation database coding

Serial number	Route	Path descriptor	Waypoint name	Flyover	Course °M (°T)	Magnetic variation	Distance (NM)	Turn direction	Altitude (ft)	Speed (kt)	Remarks	NAV SPEC
010	CRE 1V	CF	RI901	Y	305° (308.7°T)	4°E	3.5	-	-	-	<sup>(1)</sup> MNM PDG 4.0% (243 ft/NM) until RI906	RNAV 1
020		DF	RI906	Y	-	4°E	-	L	-7000 +3700	-240	<sup>(2)</sup> Initial DEP track 15° offset of the RWY C/L.	
030		TF	CRE	-	175° (178.5°T)	4°E	12.3	-	-	-		

**WARNING: Back-up conventional (NON-RNAV) procedure, in case of loss of RNAV 1 capability or RNAV system failure, below minimum radar vectoring altitude for RNAV SIDs ALIVO 1U and RUGOG 1U only:**

Climb on track 305°. At 3.7 DME RJK turn LEFT climbing to intercept and follow QDM 175° CRE NDB to 35.7 DME LSJ. Cross 35.7 DME at or above 3700 ft AMSL, but at or below 7000 ft AMSL. After crossing 35.7 DME LSJ proceed via RNAV SID flight procedure filed in FPL or according to ATC instruction. MAX IAS 240 kt. MNM PDG 4.2% (255 ft/NM) to 7100 ft AMSL.

**LDRI RNAV STANDARD INSTRUMENT DEPARTURE RWY 32**

## Proposed tabular description for navigation database coding

Serial number	Route	Path descriptor	Waypoint name	Flyover	Course °M (°T)	Magnetic variation	Distance (NM)	Turn direction	Altitude (ft)	Speed (kt)	Remarks	NAV SPEC
010	ALIVO 1U	CF	RI901	Y	305° (308.7°T)	4°E	3.5	-	-	-	<sup>(1)</sup> MNM PDG 4.2% (255 ft/NM) to 7100 ft AMSL	RNAV 1
020		DF	RI906	Y	-	4°E	-	L	-7000 +3700	-240	<sup>(2)</sup> Initial DEP track 15° offset of the RWY C/L.	
030		DF	RI907	-	-	4°E	-	L	+7100			
040		TF	ALIVO	-	355° (358.8° T)	4°E	23.9	L	+8000	-		
010	RUGOG 1U	CF	RI901	Y	305° (308.7°T)	4°E	3.5	-	-	-	<sup>(1)</sup> MNM PDG 4.2% (255 ft/NM) to 7100 ft AMSL	RNAV 1
020		DF	RI906	Y	-	4°E	-	L	-7000 +3700	-240	<sup>(2)</sup> Initial DEP track 15° offset of the RWY C/L.	
030		DF	RI907	-	-	4°E	-	L	+7100			
040		TF	RUGOG	-	065° (068.8° T)	4°E	25.5	-	-	-		

CHANGE: Glider activity zones LDA11 / ISTRINA ZONA 1 and LDA12 / ISTRINA ZONA 2 deleted; Water aerodrome RAB/Rab deleted; Heliport RIJEKA/Delta added.

**WARNING: Back-up conventional (NON-RNAV) procedure, in case of loss of RNAV 1 capability or RNAV system failure, below minimum radar vectoring altitude for RNAV SID ALIVO 1V only:**

Climb on R-305 RJK. At 10.6 DME RJK turn RIGHT on track 012° climbing to intercept and follow QDR 066° BRZ NDB to ALIVO. On passing 7100 ft AMSL proceed via RNAV SID ALIVO 1V or according to ATC instruction. MAX IAS 230 kt. MNM PDG 6.8% (413 ft/NM) to 7100 ft AMSL. Due to FIR boundary, do not overshoot 17.1 DME RJK during the turns.

**LDRI RNAV STANDARD INSTRUMENT DEPARTURE RWY 32**

Proposed tabular description for navigation database coding

Serial number	Route	Path descriptor	Waypoint name	Flyover	Course °M (°T)	Magnetic variation	Distance (NM)	Turn direction	Altitude (ft)	Speed (kt)	Remarks	NAV SPEC
010	ALIVO 1V	CF	RI902	-	305° (308.7°T)	4°E	10.4	-	-	-	(1) MNM PDG 6.8% (413 ft/NM) to 7100 ft AMSL.	RNAV 1
020		TF	RI904	-	012° (015.8°T)	4°E	6.7	-	+7100	-230	(2) Initial DEP track 15° offset of the RWY C/L.	
030		TF	ALIVO	-	066° (070.1°T)	4°E	14.6	-	+8000	-		

**WARNING: Back-up conventional (NON-RNAV) procedure, in case of loss of RNAV 1 capability or RNAV system failure, below minimum radar vectoring altitude for RNAV SID RUGOG 1V only:**

Climb on R-305 RJK. At 10.6 DME RJK turn RIGHT on track 012° climbing to intercept and follow QDR 098° BRZ NDB to RUGOG. Cross R-007 RJK at or above 7100 ft AMSL. On passing 7100 ft AMSL proceed via RNAV SID RUGOG 1V or according to ATC instruction. MAX IAS 210 kt. MNM PDG 6.6% (401 ft/NM) to 7100 ft AMSL. Due to FIR boundary, do not overshoot 17.1 DME RJK during the turns.

**LDRI RNAV STANDARD INSTRUMENT DEPARTURE RWY 32**

Proposed tabular description for navigation database coding

Serial number	Route	Path descriptor	Waypoint name	Flyover	Course °M (°T)	Magnetic variation	Distance (NM)	Turn direction	Altitude (ft)	Speed (kt)	Remarks	NAV SPEC
010	RUGOG 1V	CF	RI902	-	305° (308.7°T)	4°E	10.4	-	-	-	(1) MNM PDG 6.6% (401 ft/NM) to 7100 ft AMSL.	RNAV 1
020		TF	RI903	-	012° (015.8°T)	4°E	5.1	-	-	-	(2) Initial DEP track 15° offset of the RWY C/L.	
030		TF	RI905	-	098° (101.7°T)	4°E	9.0	-	+7100	-210		
040		TF	RUGOG	-	098° (101.9°T)	4°E	30.4	-	-	-		

Waypoint coordinates

Waypoint name	WGS-84 latitude	WGS-84 longitude
ALIVO	453124N	0144421E
RUGOG	451641N	0151845E
CRE	445410.37N	0142459.57E
RI901	451543.1N	0142949.8E
RI902	452001.0N	0142211.8E
RI903	452455.0N	0142409.9E
RI904	452627.3N	0142447.0E
RI905	452304.4N	0143640.2E
RI906	450630.5N	0142432.7E
RI907	450732.1N	0144504.8E

CHANGE: Glider activity zones LDA11 / ISTRAZONA 1 and LDA12 / ISTRAZONA 2 deleted; Water aerodrome RAB/Rab deleted; Heliport RIJEKA/Delta added.

OVA STRANICA JE NAMJERNO OSTAVLJENA PRAZNA  
THIS PAGE INTENTIONALLY LEFT BLANK