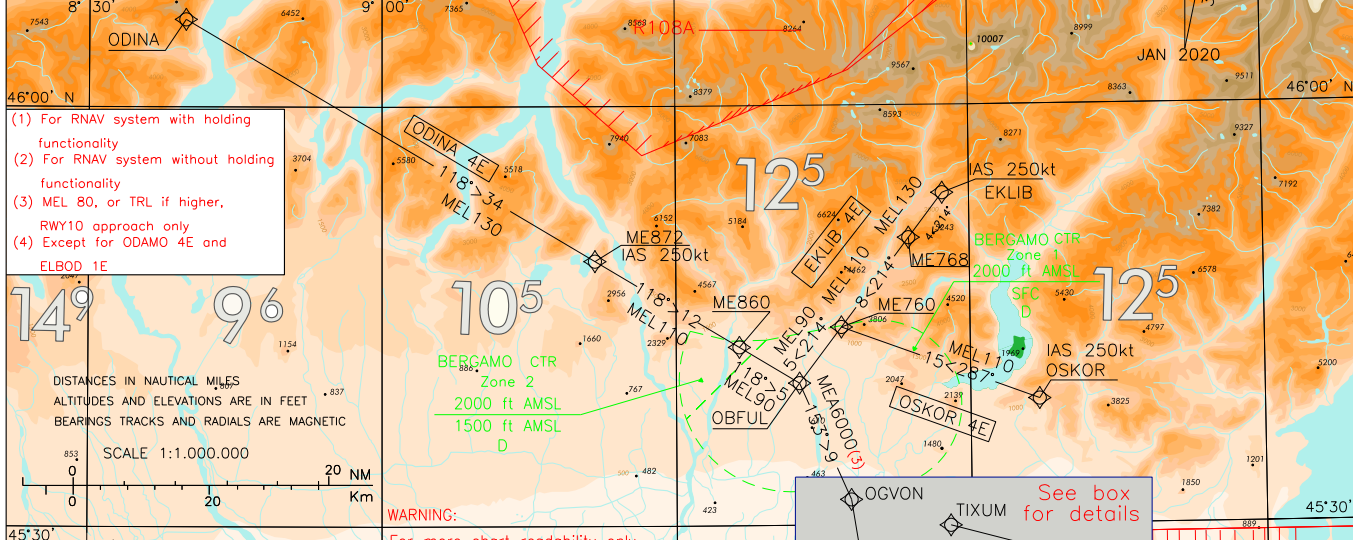


|                     |                                       |                                      |  |                    |                           |
|---------------------|---------------------------------------|--------------------------------------|--|--------------------|---------------------------|
| LEGEND              |                                       | FREQUENCIES                          |  | STAR<br>RNAV1/RNP1 | BERGAMO/<br>ORIO AL SERIO |
| STAR                | APP Milano Radar 126.750<br>(126.300) | TWR Orio TWR 125.875<br>(CH 134.105) | ATIS Bergamo ATIS 118.540<br>Information |                    |                           |
| — 090° > 25 —       |                                       |                                      |  |                    | TRANSITION ALT 6000       |
| STAR ATC DISCRETION |                                       |                                      |  |                    |                           |
| — 048° > 16 —       |                                       |                                      |  |                    |                           |

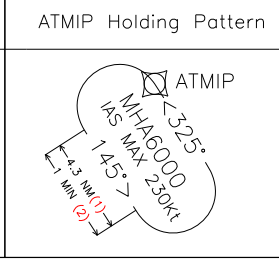
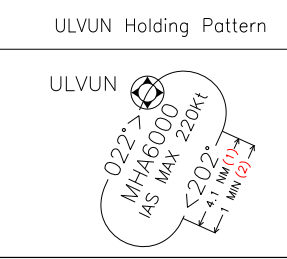
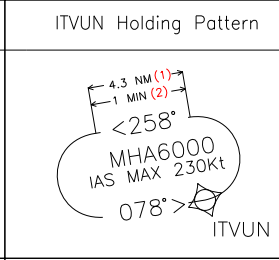
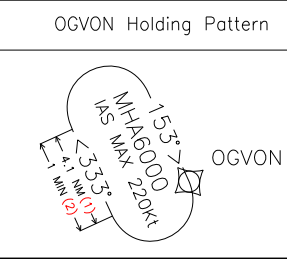
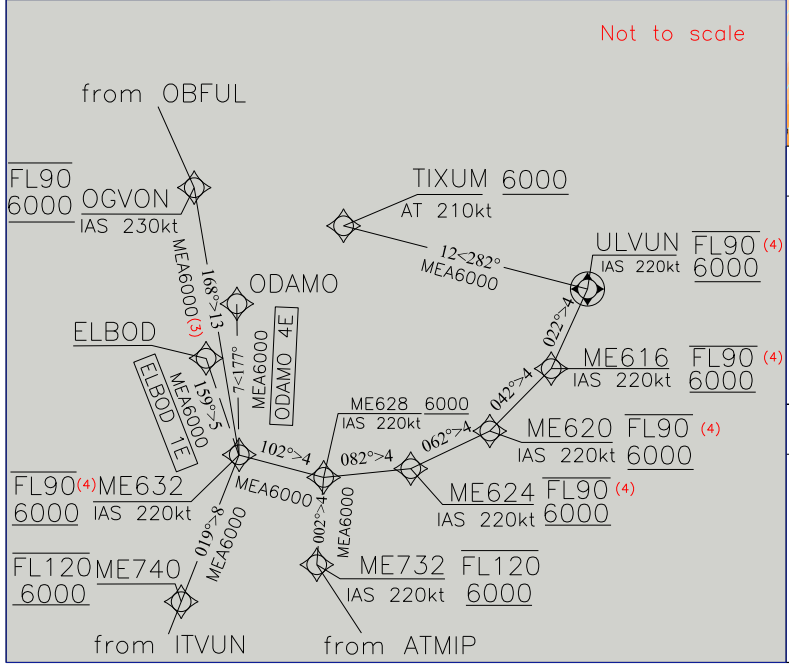
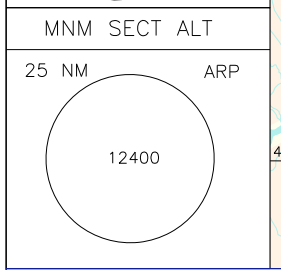
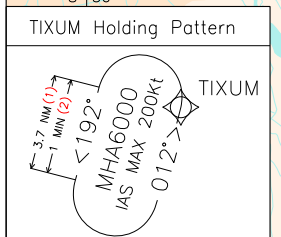
IN CASE OF RADIO FAILURE:  
 TRY TO ESTABLISH CONTACT ON ALTERNATIVE FREQUENCIES:  
 APP: 126.300MHZ, 126.750MHZ, EMERGENCY: 121.500MHZ, TWR: 125.875MHZ  
 IF STILL UNABLE TO ESTABLISH CONTACT:  
 - SQUAWK 7600  
 - APPROACH CLEARANCE ALREADY RECEIVED: CONTINUE APPROACH ACCORDINGLY  
 - APPROACH CLEARANCE NOT RECEIVED: MAINTAIN ASSIGNED LEVEL AND PROCEED ALONG ASSIGNED STAR, OR EXPECTED STAR IF NOT ASSIGNED, UNTIL TIXUM, AT TIXUM DESCEND TO MHA AND START APPROACH FOR RWY10/28  
 REMARK: IF EAT HAS BEEN ISSUED, APPROACH SHALL START AT EAT.



- (1) For RNAV system with holding functionality
- (2) For RNAV system without holding functionality
- (3) MEL 80, or TRL if higher, RWY10 approach only
- (4) Except for ODAMO 4E and ELBOD 1E

DISTANCES IN NAUTICAL MILES  
 ALTITUDES AND ELEVATIONS ARE IN FEET  
 BEARINGS TRACKS AND RADIALS ARE MAGNETIC  
 SCALE 1:1.000.000  
 20 NM  
 20 Km

**WARNING:**  
 For more chart readability only areas with upper vertical limit higher than 4500 ft AMSL are depicted.  
 For further details see: VFR Area Chart, Visual Approach and Instrument Approach Chart



CHANGE: ATIS FREQUENCY UPDATED