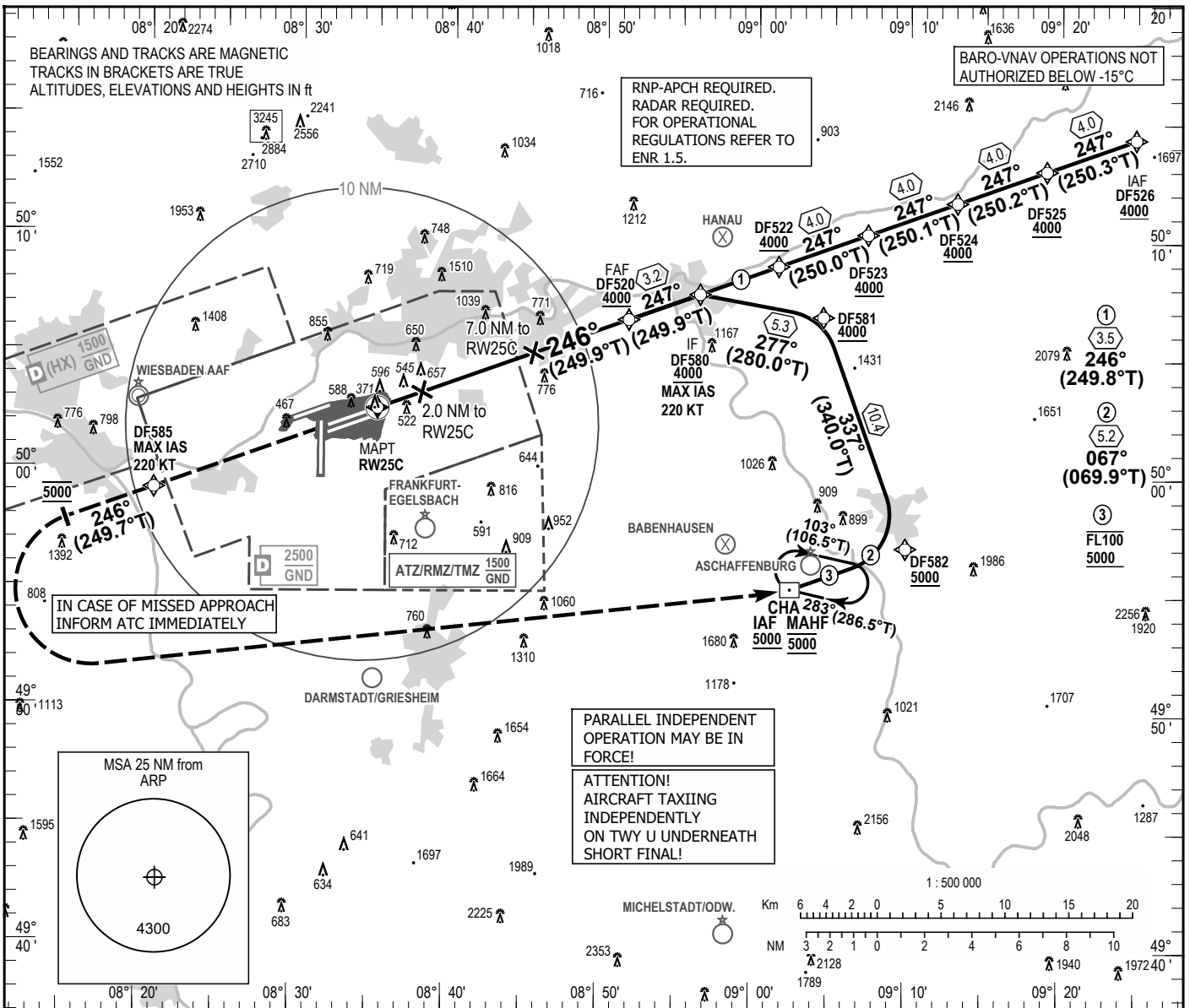


INSTRUMENT APPROACH
CHART - ICAO

VAR 3° E
ELEV 363
OCH RELATED TO
THR 25C ELEV 363

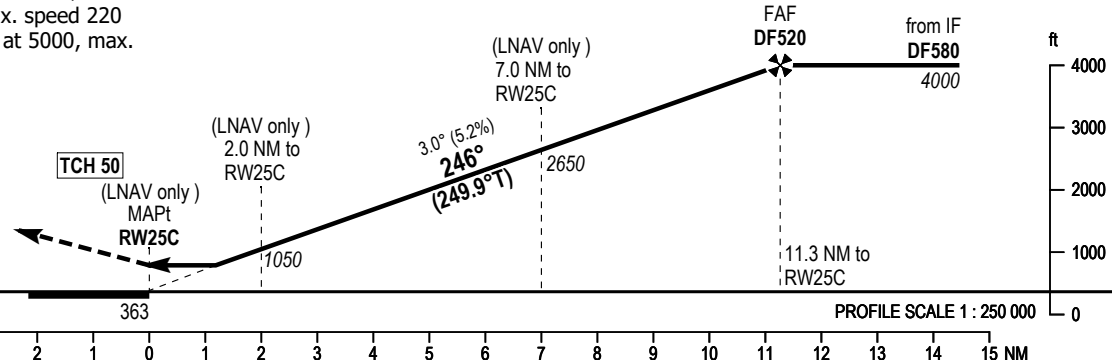
FRANKFURT ATIS	118.030	FRANKFURT TOWER	119.905
LANGEN RADAR	120.805	FRANKFURT GROUND	121.805
LANGEN RADAR	125.355	FRANKFURT APRON	121.755
FRANKFURT ARRIVAL	127.280	FRANKFURT APRON	121.855
FRANKFURT TOWER	118.780	FRANKFURT APRON	121.955

FRANKFURT MAIN
RNP Z RWY 25C
EGNOS CH 75346 E25K



MISSED APPROACH PROCEDURE

Direct to DF585, max. speed 220 kts; climb on course 246°, at 5000 turn left, max. speed 220 kts; direct to CHA at 5000, max. speed 250 kts.



OCA (OCH)	A	B	C	D	DL
LNAV	790 (430)	790 (430)	790 (430)	790 (430)	
LNAV / VNAV	691 (328)	700 (337)	706 (343)	714 (351)	
LPV	501 (138)	513 (150)	521 (158)	531 (168)	531 (168)

DIST THR / RW25C	2	3	4	5	6	7	8	9	10	11
ALTITUDE	1050	1380	1700	2020	2340	2650	2970	3290	3600	3920

GS	kt	80	100	120	140	160	180
DF520 - RW25C (11.3 NM)	MIN:SEC	8:27	6:46	5:38	4:50	4:13	3:45
Rate of descent (5.2%)	ft/MIN	420	530	640	740	850	960

Correction: Callsign.