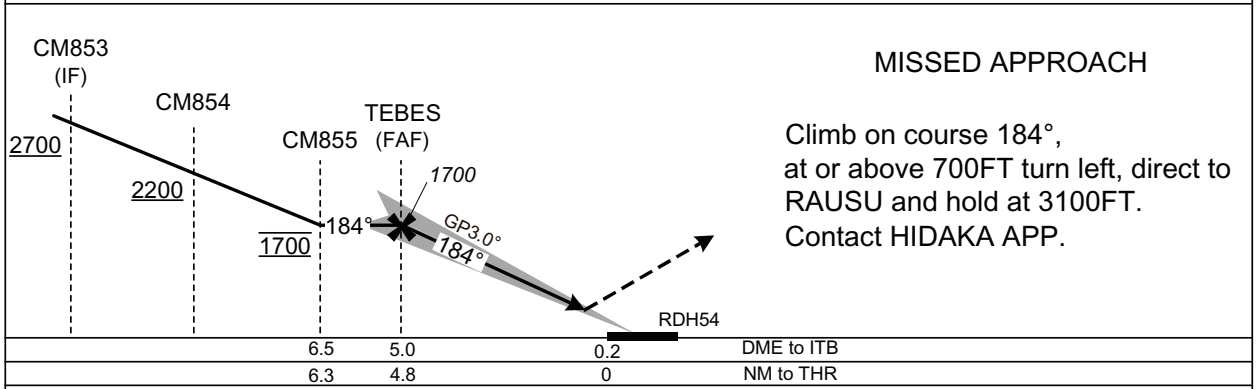
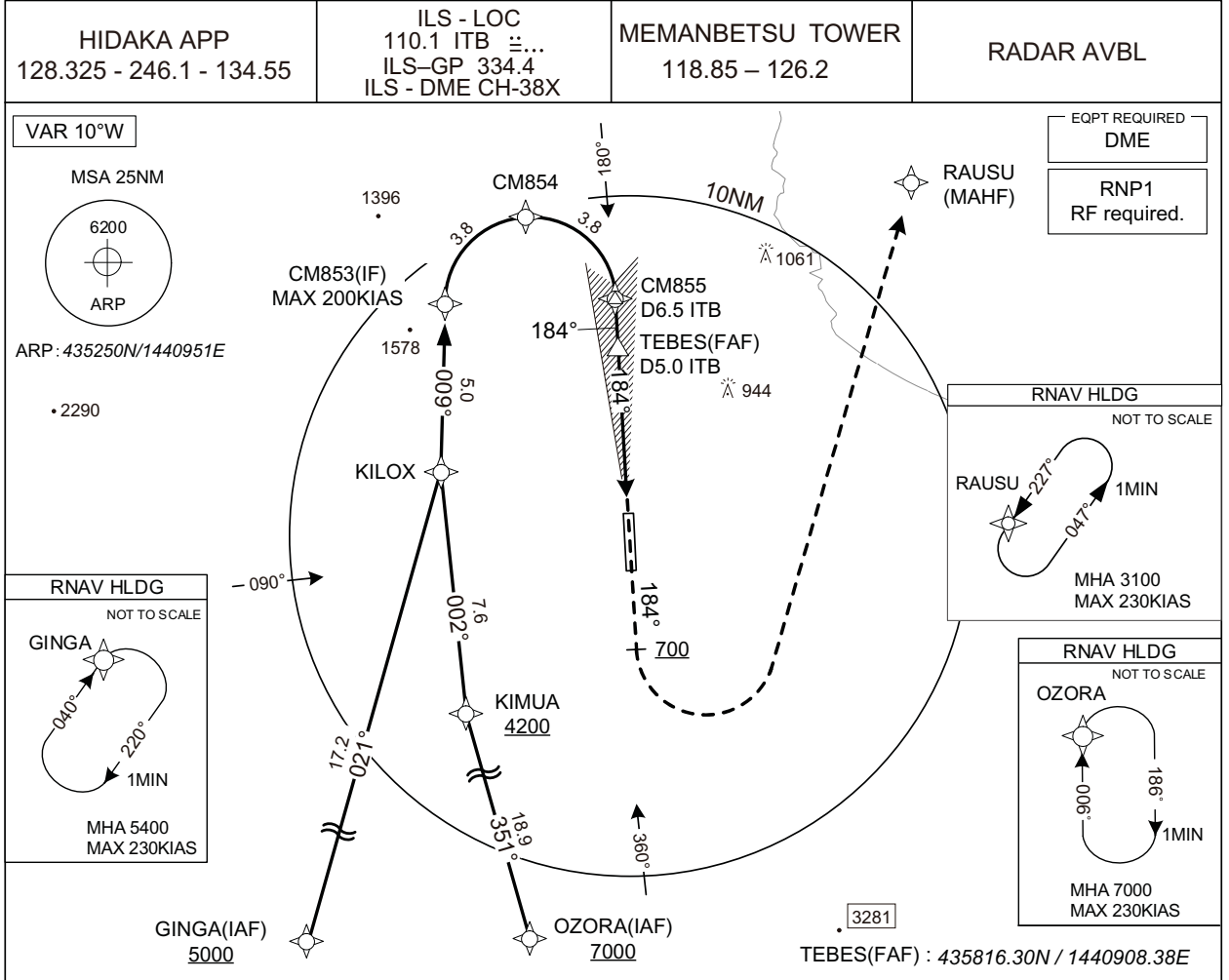


INSTRUMENT APPROACH CHART

RJCM / MEMANBETSU

ILS X RWY18



	MINIMA	THR elev. 102	AD elev. 109		
CHANGE : VAR.	CAT	CAT I		CIRCLING	
		DA(H)	RVR/CMV	MDA(H)	VIS
	A	302 (200)	550	640 (531)	1600
	B			750 (641)	2400
	C			760 (651)	3200
D					

INSTRUMENT APPROACH CHART

RJCM / MEMANBETSU

ILS X RWY18

Coding Table

Serial Number	Path Descriptor	Waypoint Identifier	Fly Over	Course °M(°T)	Magnetic Variation	Distance (NM)	Turn Direction	Altitude (FT)	Speed (KIAS)	Vertical Angle	Navigation Specification
001	IF	GINGA	-	-	-9.6	-	-	+5000	-	-	RNP1
002	TF	KILOX	-	021 (011.9)	-9.6	17.2	-	-	-	-	RNP1
003	TF	CM853	-	009 (359.2)	-9.6	5.0	-	+2700	-200	-	RNP1
001	IF	OZORA	-	-	-9.6	-	-	+7000	-	-	RNP1
002	TF	KIMUA	-	351 (341.4)	-9.6	18.9	-	+4200	-	-	RNP1
003	TF	KILOX	-	002 (352.2)	-9.6	7.6	-	-	-	-	RNP1
004	TF	CM853	-	009 (359.2)	-9.6	5.0	-	+2700	-200	-	RNP1
001	IF	CM853	-	-	-9.6	-	-	+2700	-200	-	RNP1
002	RF Center: CMRF2 r=2.51NM	CM854	-	-	-9.6	3.8	R	+2200	-	-	RNP1
003	RF Center: CMRF2 r=2.51NM	CM855	-	-	-9.6	3.8	R	1700	-	-	RNP1
001	CA	-	-	184 (174.7)	-9.6	-	-	+700	-	-	RNP1
002	DF	RAUSU	-	-	-9.6	-	L	3100	-	-	RNP1

Path	Waypoint Identifier	Inbound Course °M(°T)	Magnetic Variation	Outbound Time (MIN)	Turn Direction	Minimum Altitude (FT)	Maximum Altitude (FT)	Speed (KIAS)	Navigation Specification
Hold	GINGA	040 (030.8)	-9.5	1.0 (-14000)	R	5400	FL140	-230 (-14000)	RNP1
Hold	OZORA	006 (356.7)	-9.5	1.0 (-14000)	R	7000	FL140	-230 (-14000)	RNP1
Hold	RAUSU	227 (217.0)	-9.5	1.0 (-14000)	L	3100	FL140	-230 (-14000)	RNP1

Waypoint Coordinates

Waypoint Identifier	Coordinates	RF Arc Center Identifier	Coordinates
GINGA	433738.73N / 1435710.93E	CMRF2	435931.80N / 1440529.11E
OZORA	432908.24N / 1441153.19E		
KIMUA	434701.35N / 1440331.41E		
KILOX	435429.92N / 1440206.12E		
CM853	435929.83N / 1440200.57E		
CM854	440202.15N / 1440517.96E		
CM855	435945.90N / 1440856.76E		
RAUSU	440327.56N / 1442052.43E		

CHANGE : Navigation Specification(Basic RNP1 → RNP1).