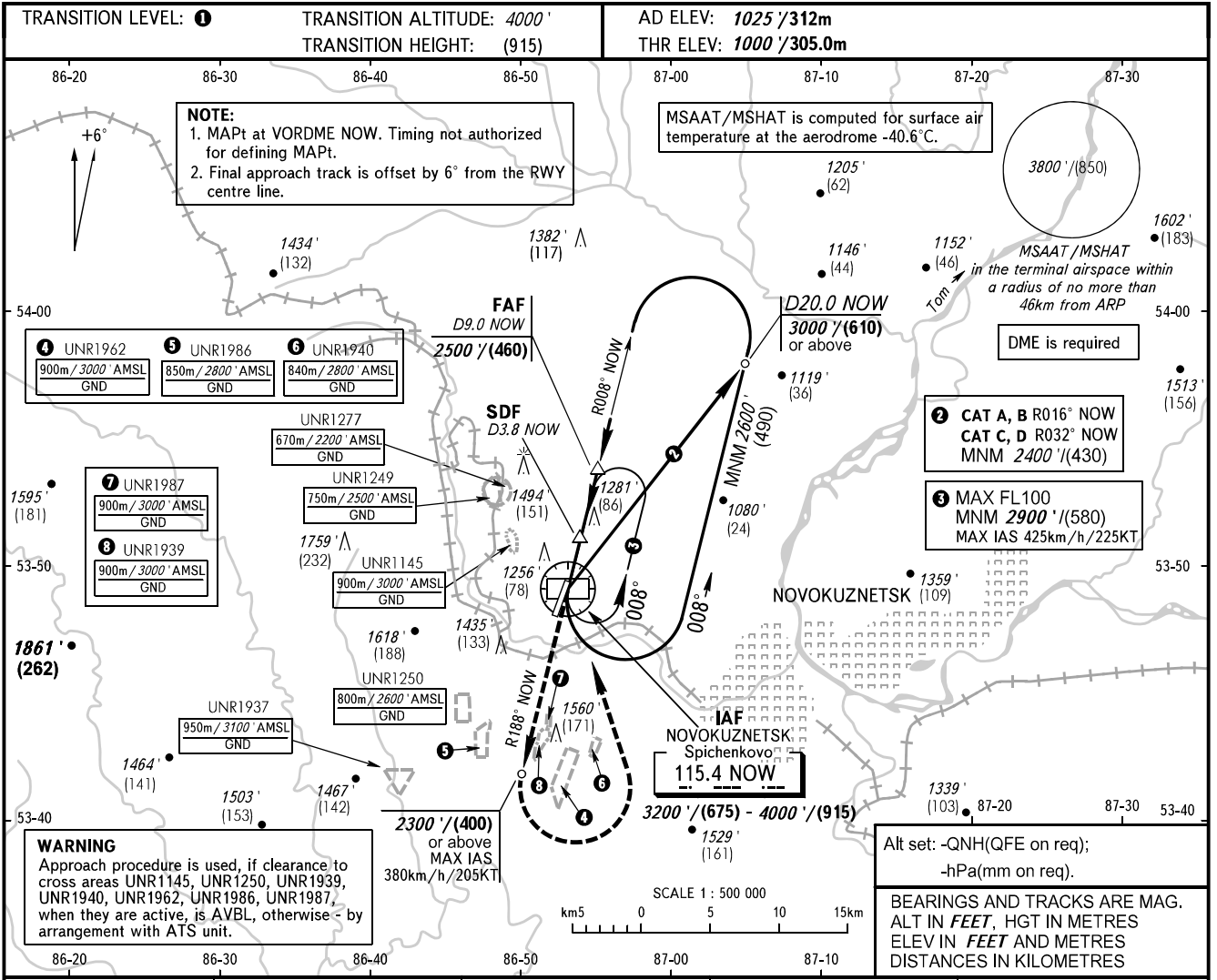


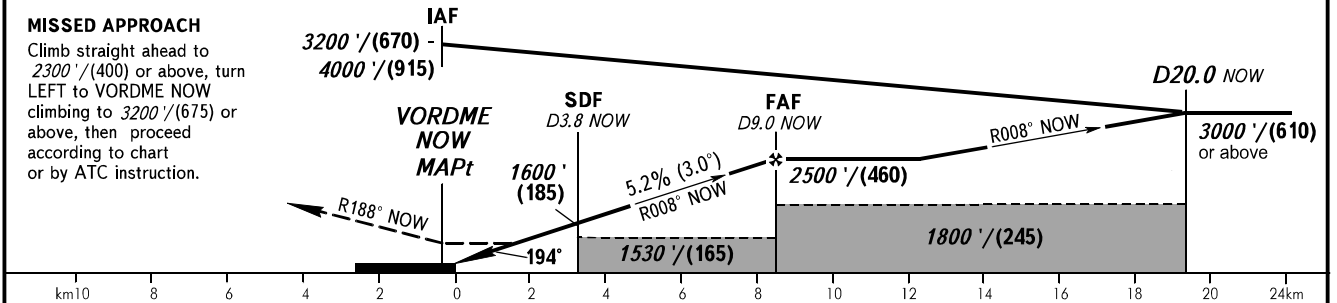
**INSTRUMENT
APPROACH
CHART - ICAO**

APPROACH START 118.600
121.200

**NOVOKUZNETSK, RUSSIA
SPICHENKOVO
VOR RWY 19**



DME NOW	4.0	6.0	8.0	9.0
ALTITUDE/HEIGHT	1650' / (200)	1990' / (305)	2330' / (410)	2500' / (460)



OCA(H)		A	B	C	D	① TRANSITION LEVEL: - FL050 when QNH is 1013 hPa (760mm mercury column) or above; - FL060 when QNH is 977 hPa (733mm mercury column) or above, but less than 1013 hPa (760mm mercury column); - FL070 when QNH is less than 977 hPa (733mm mercury column).
Straight-in Approach	With SDF	1430' (430') (135)	1430' (430') (135)	1430' (430') (135)	1430' (430') (135)	
	WO SDF	1530' (530') (165)	1530' (530') (165)	1530' (530') (165)	1530' (530') (165)	
Circling		1560' (530') (165)	1730' (710') (220)	1830' (810') (255)	1960' (940') (295)	

GROUND SPEED	km/h	150	180	210	240	270	300	330	360
	kt	81	97	113	130	146	162	178	195
RATE OF DESCENT	m/s	2.2	2.6	3.1	3.5	3.9	4.4	4.8	5.2
	ft/min	433	512	610	689	768	866	945	1024