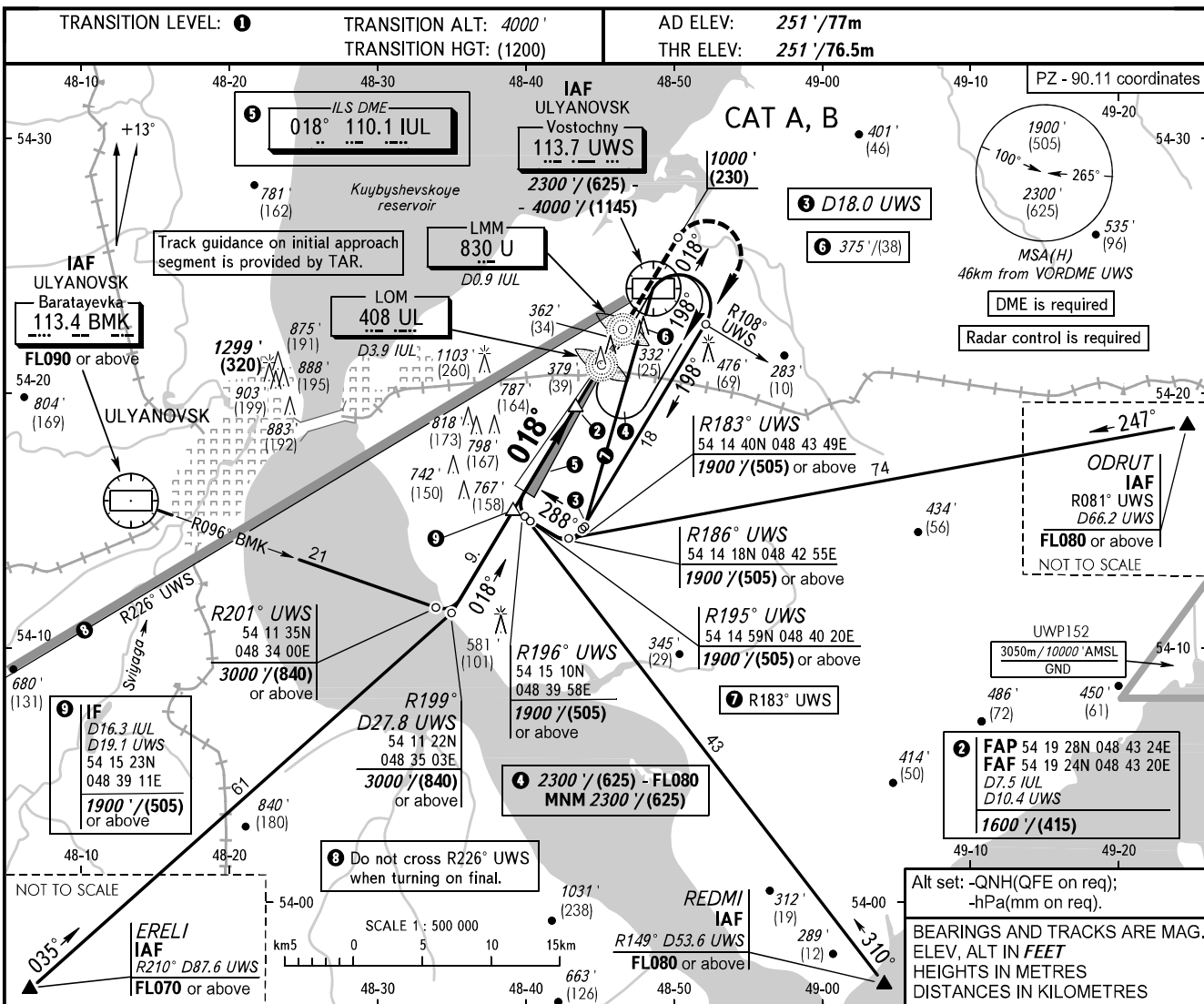


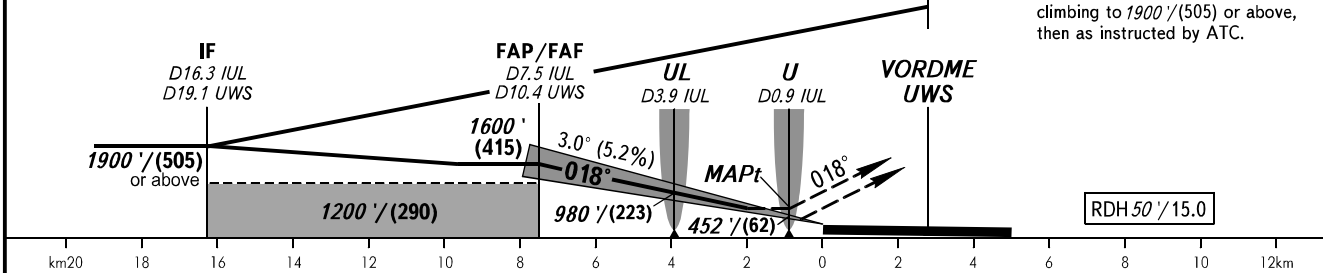
**INSTRUMENT
APPROACH
CHART - ICAO**

VOSTOCHNY TOWER 124.200

**ULYANOVSK, RUSSIA
VOSTOCHNY
ILS Y CAT I, LOC Y RWY 02**



DME UWS	10.0	8.0	6.0
ALTITUDE/HEIGHT	1530' / (390)	1190' / (287)	850' / (183)



OCA(H)		A	B	C	D						
Straight-in	CAT I	388' (137') (42)	396' (145') (45)								
	LOC	610' (360') (110)	610' (360') (110)								
Approach											
Circling		680' (420') (135)	750' (500') (155)								
GROUND SPEED	km/h		150	180	210	240	270	300	330	360	390
	kt		81	97	113	130	146	162	178	194	211
RATE OF DESCENT	m/s		2.2	2.6	3.0	3.5	3.9	4.3	4.8	5.2	5.6
	ft / min		427	512	597	682	768	853	938	1024	1109

1 **TRANSITION LEVEL:**
 - FL050 when QNH is 977 hPa (733mm mercury column) or above;
 - FL060 when QNH is less than 977 hPa (733mm mercury column).

WARNING:
 1. Visual manoeuvring north-west of the aerodrome is PROHIBITED.
 2. Zero range of DME IUL is indicated at RWY 02 THR.