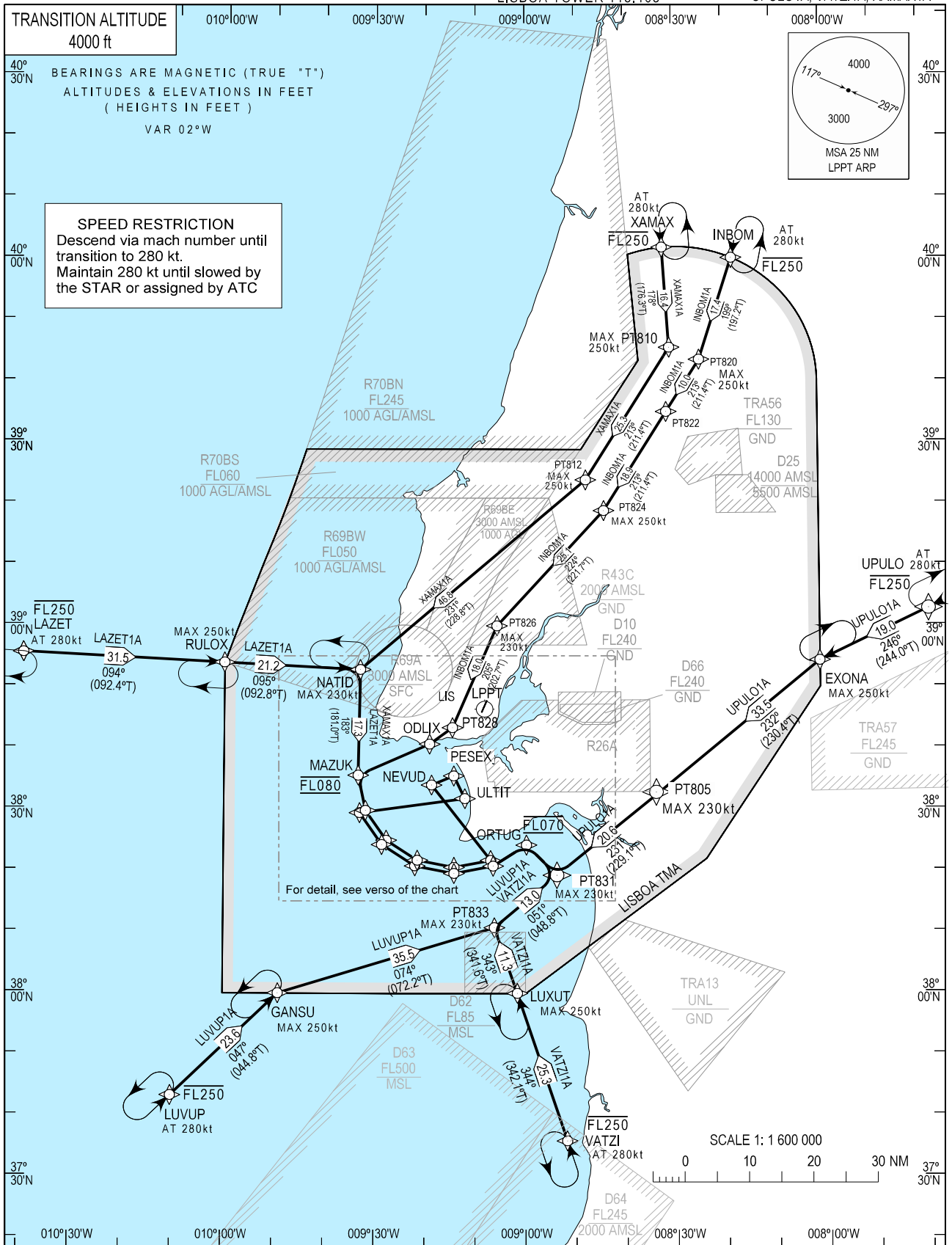
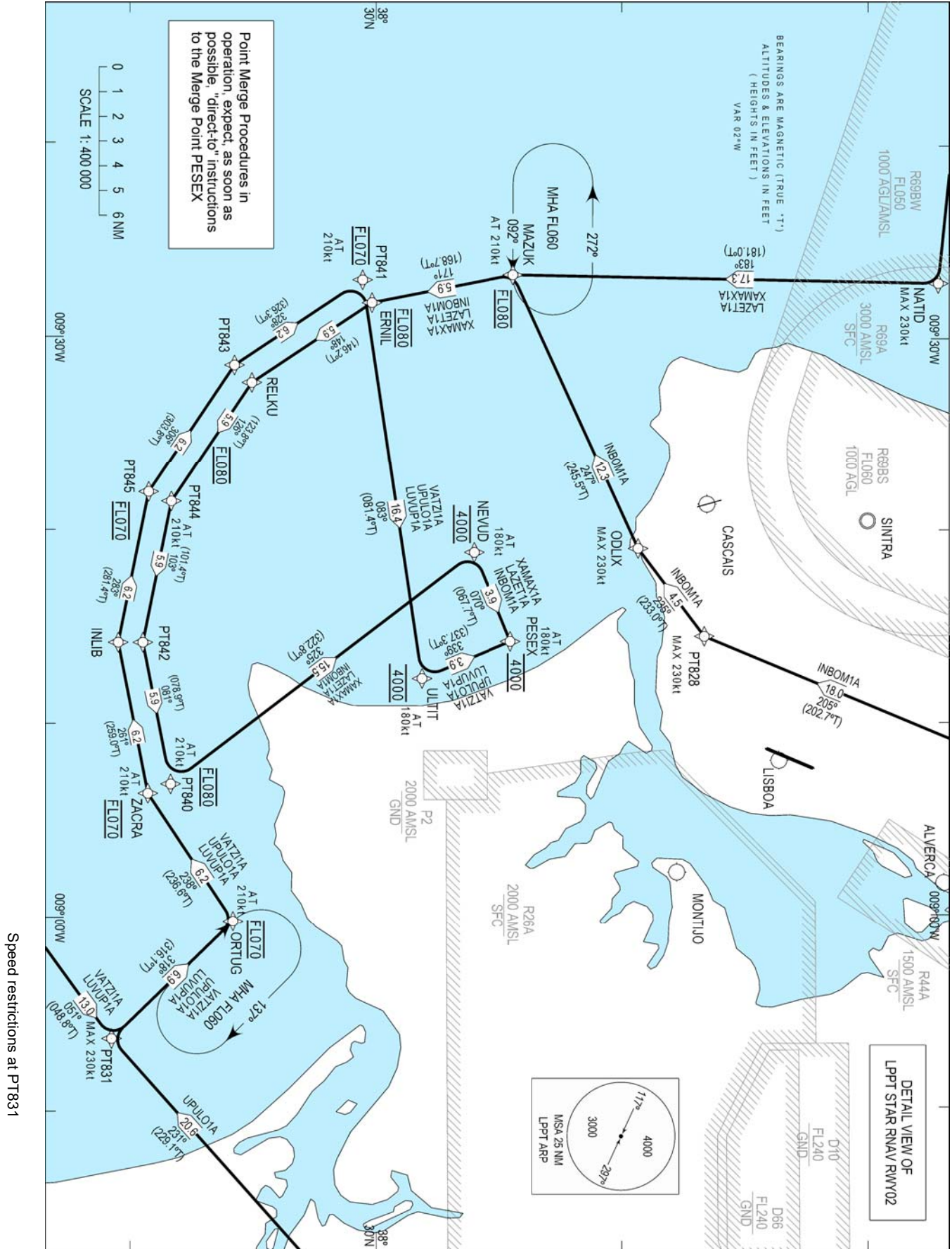


STANDARD ARRIVAL CHART -  
INSTRUMENT (STAR) - ICAO

LISBOA ARR INFORMATION 124.155 LISBOA, Humberto Delgado (LPPT)  
LISBOA CONTROL 123.980  
LISBOA APPROACH 119.105 RNAV RWY 02  
LISBOA ARRIVAL 125.130 INBOM1A, LAZET1A, LUVUP1A  
LISBOA TOWER 118.105 UPULO1A, VATZ1A, XAMAX1A





LISBOA STAR RNAV1 INBOM1A (RWY 02)										
Path Terminator	Waypoint			Course/Track MAG (True)	Dist NM	Turn Direction	Constraints		Navigation Specification	Remarks
	Identifier	Flyover	Coordinates				Level	Speed		
IF	INBOM	N	400006.91N 0081807.21W	-	-	-	- FL250	@280 kt	RNAV 1	Clearance Limit: PESEX
TF	PT820	N	394330.74N 0082447.11W	199 (197.2)	17.3654	-	-	250 kt	RNAV 1	
TF	PT822	N	393500.57N 0083129.79W	213 (211.4)	9.9522	-	-	250 kt	RNAV 1	
TF	PT824	N	391851.89N 0084408.99W	213 (211.4)	18.8751	-	-	250 kt	RNAV 1	
TF	PT826	N	390003.57N 0090535.23W	224 (221.7)	25.1205	-	-	230 kt	RNAV 1	
TF	PT828	N	384325.34N 0091428.52W	205 (202.7)	18.0129	-	-	230 kt	RNAV 1	
TF	ODLIX	N	384044.12N 0091901.50W	235 (233.0)	4.4599	-	-	230 kt	RNAV 1	
TF	MAZUK	N	383537.82N 0093314.50W	247 (245.5)	12.2513	-	@FL080	@210 kt	RNAV 1	
TF	ERNIL	N	382953.20N 0093147.03W	171 (168.7)	5.8508	-	@FL080	@210 kt	RNAV 1	
TF	RELKU	N	382500.92N 0092738.80W	148 (146.2)	5.8516	-	@FL080	@210 kt	RNAV 1	
TF	PT844	N	382145.30N 0092127.79W	126 (123.8)	5.8517	-	@FL080	@210 kt	RNAV 1	
TF	PT842	N	382035.89N 0091410.22W	103 (101.4)	5.8519	-	@FL080	@210 kt	RNAV 1	
TF	PT840	N	382143.17N 0090652.11W	081 (078.9)	5.8520	-	@FL080	@210 kt	RNAV 1	
TF	NEVUD	N	383403.69N 0091848.99W	325 (322.8)	15.4941	-	@4000 ft	@180 kt	RNAV 1	
TF	PESEX	N	383532.42N 0091412.69W	070 (067.7)	3.9015	-	@4000 ft	@180 kt	RNAV 1	

LISBOA STAR RNAV1 LAZET1A (RWY 02)										
Path Terminator	Waypoint			Course/Track MAG (True)	Dist NM	Turn Direction	Constraints		Navigation Specification	Remarks
	Identifier	Flyover	Coordinates				Level	Speed		
IF	LAZET	N	385526.20N 0104015.64W	-	-	-	- FL250	@280 kt	RNAV 1	Clearance Limit:PESEX
TF	RULOX	N	385400.00N 0100000.00W	094 (092.4)	31.4577	-	-	250 kt	RNAV 1	
TF	NATID	N	385254.02N 0093251.90W	095 (092.8)	21.2146	-	-	230 kt	RNAV 1	
TF	MAZUK	N	383537.82N 0093314.50W	183 (181.0)	17.2555	-	@FL080	@210 kt	RNAV 1	
TF	ERNIL	N	382953.20N 0093147.03W	171 (168.7)	5.8508	-	@FL080	@210 kt	RNAV 1	
TF	RELKU	N	382500.92N 0092738.80W	148 (146.2)	5.8516	-	@FL080	@210 kt	RNAV 1	
TF	PT844	N	382145.30N 0092127.79W	126 (123.8)	5.8517	-	@FL080	@210 kt	RNAV 1	
TF	PT842	N	382035.89N 0091410.22W	103 (101.4)	5.8519	-	@FL080	@210 kt	RNAV 1	
TF	PT840	N	382143.17N 0090652.11W	081 (078.9)	5.8520	-	@FL080	@210 kt	RNAV 1	
TF	NEVUD	N	383403.69N 0091848.99W	325 (322.8)	15.4941	-	@4000 ft	@180 kt	RNAV 1	
TF	PESEX	N	383532.42N 0091412.69W	070 (067.7)	3.9015	-	@4000 ft	@180 kt	RNAV 1	

LISBOA STAR RNAV1 LUVUP1A (RWY 02)										
Path Terminator	Waypoint			Course/Track MAG (True)	Dist NM	Turn Direction	Constraints		Navigation Specification	Remarks
	Identifier	Flyover	Coordinates				Level	Speed		
IF	LUVUP	N	374313.23N 0101006.92W	-	-	-	-FL250	@280 kt	RNAV 1	Clearance Limit: PESEX. Pending on military activity.
TF	GANSU	N	380000.00N 0094903.18W	047 (044.8)	23.6460	-	-	250 kt	RNAV 1	
TF	PT833	N	381043.61N 0090609.33W	074 (072.2)	35.5207	-	-	230 kt	RNAV 1	
TF	PT831	N	381917.51N 0085343.22W	051 (048.8)	13.0060	-	-	230 kt	RNAV 1	
TF	ORTUG	N	382414.30N 0085945.89W	318 (316.1)	6.8569	-	@FL070	@210 kt	RNAV 1	
TF	ZACRA	N	382047.59N 0090623.24W	238 (236.6)	6.2423	-	@FL070	@210 kt	RNAV 1	
TF	INLIB	N	381935.84N 0091410.46W	261 (259.0)	6.2422	-	@FL070	@210 kt	RNAV 1	
TF	PT845	N	382049.86N 0092157.10W	283 (281.4)	6.2420	-	@FL070	@210 kt	RNAV 1	
TF	PT843	N	382418.48N 0092832.80W	306 (303.8)	6.2418	-	@FL070	@210 kt	RNAV 1	
TF	PT841	N	382930.21N 0093257.62W	328 (326.3)	6.2417	-	@FL070	@210 kt	RNAV 1	
TF	ULTIT	N	383156.20N 0091217.65W	083 (081.3)	16.4019	-	@4000 ft	@180 kt	RNAV 1	
TF	PESEX	N	383532.42N 0091412.69W	339 (337.3)	3.9015	-	@4000 ft	@180 kt	RNAV 1	

LISBOA STAR RNAV1 UPULO1A (RWY 02)										
Path Terminator	Waypoint			Course/Track MAG (True)	Dist NM	Turn Direction	Constraints		Navigation Specification	Remarks
	Identifier	Flyover	Coordinates				Level	Speed		
IF	UPULO	N	390237.57N 0073907.04W	-	-	-	-FL250	@280 kt	RNAV 1	Clearance Limit: PESEX
TF	EXONA	N	385415.89N 0080100.00W	246 (244.0)	19.0002	-	-	250 kt	RNAV 1	
TF	PT805	N	383250.37N 0083353.07W	232 (230.4)	33.4724	-	-	230 kt	RNAV 1	
TF	PT831	N	381917.51N 0085343.22W	231 (229.1)	20.6416	-	-	230 kt	RNAV 1	
TF	ORTUG	N	382414.30N 0085945.89W	318 (316.1)	6.8569	-	@FL070	@210 kt	RNAV 1	
TF	ZACRA	N	382047.59N 0090623.24W	238 (236.6)	6.2423	-	@FL070	@210 kt	RNAV 1	
TF	INLIB	N	381935.84N 0091410.46W	261 (259.0)	6.2422	-	@FL070	@210 kt	RNAV 1	
TF	PT845	N	382049.86N 0092157.10W	283 (281.4)	6.2420	-	@FL070	@210 kt	RNAV 1	
TF	PT843	N	382418.48N 0092832.80W	306 (303.8)	6.2418	-	@FL070	@210 kt	RNAV 1	
TF	PT841	N	382930.21N 0093257.62W	328 (326.3)	6.2417	-	@FL070	@210 kt	RNAV 1	
TF	ULTIT	N	383156.20N 0091217.65W	083 (081.4)	16.4019	-	@4000 ft	@180 kt	RNAV 1	
TF	PESEX	N	383532.42N 0091412.69W	339 (337.3)	3.9015	-	@4000 ft	@180 kt	RNAV 1	

LISBOA STAR RNAV1 VATZI1A (RWY 02)										
Path Terminator	Waypoint			Course/Track MAG (True)	Dist NM	Turn Direction	Constraints		Navigation Specification	Remarks
	Identifier	Flyover	Coordinates				Level	Speed		
IF	VATZI	N	373552.11N 0085147.09W	-	-	-	- FL250	@280 kt	RNAV 1	Clearance Limit: PESEX. Pending on military activity.
TF	LUXUT	N	375959.27N 0090136.98W	344 (342.1)	25.3206	-	-	250 kt	RNAV 1	
TF	PT833	N	381043.61N 0090609.33W	343 (341.6)	11.3099	-	-	230 kt	RNAV 1	
TF	PT831	N	381917.51N 0085343.22W	051 (048.8)	13.0060	-	-	230 kt	RNAV 1	
TF	ORTUG	N	382414.30N 0085945.89W	318 (316.1)	6.8569	-	@FL070	@210 kt	RNAV 1	
TF	ZACRA	N	382047.59N 0090623.24W	238 (236.6)	6.2423	-	@FL070	@210 kt	RNAV 1	
TF	INLIB	N	381935.84N 0091410.46W	261 (259.0)	6.2422	-	@FL070	@210 kt	RNAV 1	
TF	PT845	N	382049.86N 0092157.10W	283 (281.4)	6.2420	-	@FL070	@210 kt	RNAV 1	
TF	PT843	N	382418.48N 0092832.80W	306 (303.8)	6.2418	-	@FL070	@210 kt	RNAV 1	
TF	PT841	N	382930.21N 0093257.62W	328 (326.3)	6.2417	-	@FL070	@210 kt	RNAV 1	
TF	ULTIT	N	383156.20N 0091217.65W	083 (081.4)	16.4019	-	@4000 ft	@180 kt	RNAV 1	
TF	PESEX	N	383532.42N 0091412.69W	339 (337.3)	3.9015	-	@4000 ft	@180 kt	RNAV 1	

LISBOA STAR RNAV1 XAMAX1A (RWY 02)										
Path Terminator	Waypoint			Course/Track MAG (True)	Dist NM	Turn Direction	Constraints		Navigation Specification	Remarks
	Identifier	Flyover	Coordinates				Level	Speed		
IF	XAMAX	N	400151.96N 0083210.34W	-	-	-	- FL250	@280 kt	RNAV 1	Clearance Limit: PESEX
TF	PT810	N	394530.07N 0083048.57W	178 (176.3)	16.3857	-	-	250 kt	RNAV 1	
TF	PT812	N	392353.37N 0084746.16W	213 (211.4)	25.2632	-	-	250 kt	RNAV 1	
TF	NATID	N	385254.02N 0093251.90W	231 (228.8)	46.7929	-	-	230 kt	RNAV 1	
TF	MAZUK	N	383537.82N 0093314.50W	183 (181.0)	17.2555	-	@FL080	@210 kt	RNAV 1	
TF	ERNIL	N	382953.20N 0093147.03W	171 (168.7)	5.8508	-	@FL080	@210 kt	RNAV 1	
TF	RELKU	N	382500.92N 0092738.80W	148 (146.2)	5.8516	-	@FL080	@210 kt	RNAV 1	
TF	PT844	N	382145.30N 0092127.79W	126 (123.8)	5.8517	-	@FL080	@210 kt	RNAV 1	
TF	PT842	N	382035.89N 0091410.22W	103 (101.4)	5.8519	-	@FL080	@210 kt	RNAV 1	
TF	PT840	N	382143.17N 0090652.11W	081 (078.9)	5.8520	-	@FL080	@210 kt	RNAV 1	
TF	NEVUD	N	383403.69N 0091848.99W	325 (322.8)	15.4941	-	@4000 ft	@180 kt	RNAV 1	
TF	PESEX	N	383532.42N 0091412.69W	070 (067.7)	3.9015	-	@4000 ft	@180 kt	RNAV 1	

THIS PAGE INTENTIONALLY LEFT BLANK