

STANDARD DEPARTURE CHART -INSTRUMENT

RJOA / HIROSHIMA

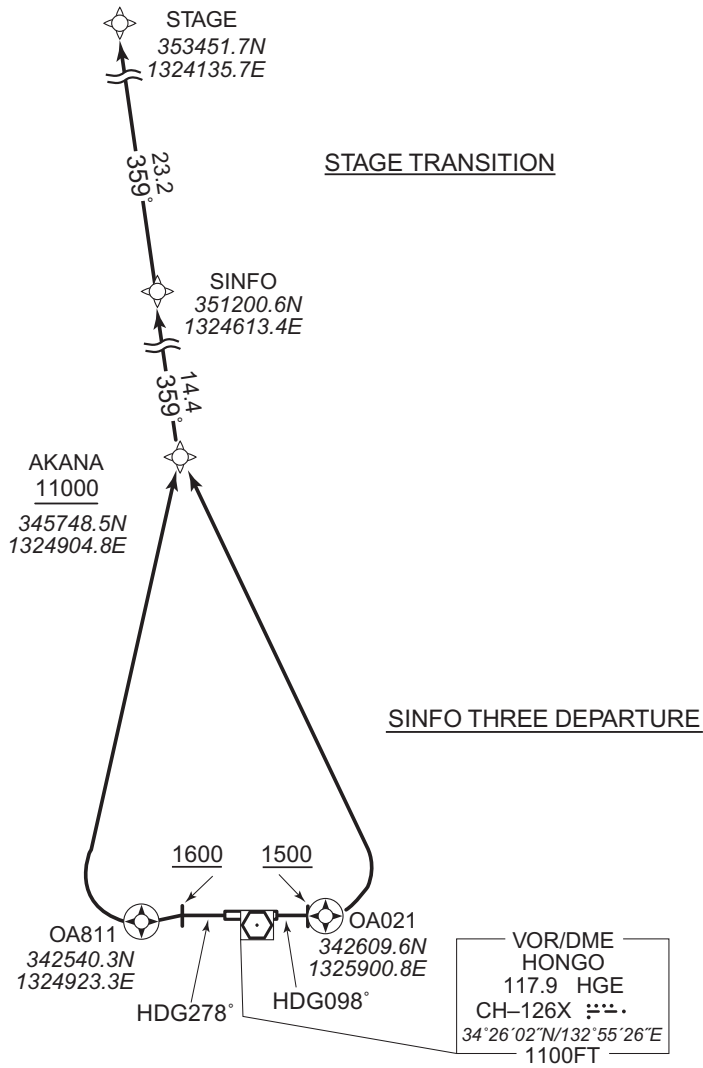
RNAV SID and TRANSITION

SINFO THREE DEPARTURE

RNP1

Note GNSS required.

VAR 8°W



CHANGE : Navigation Specification(Basic RNP1 → RNP1).

SINFO THREE DEPARTURE

RWY10 : Climb on HDG098° at or above 1500FT, direct to OA021, turn left direct to AKANA at or above 11000FT, to SINFO.

RWY28 : Climb on HDG278° at or above 1600FT, direct to OA811, turn right direct to AKANA at or above 11000FT, to SINFO.

NOTE RWY10 : 5.0% climb gradient required up to 1800FT.
OBST ALT 1780FT located at 2.30NM 006° FM end of RWY10.
RWY28 : 3.8% climb gradient required up to 3700FT.
OBST ALT 3150FT located at 11.02NM 322° FM end of RWY28.

STAGE TRANSITION

From SINFO, to STAGE.

STANDARD DEPARTURE CHART -INSTRUMENT

RJOA / HIROSHIMA

RNAV SID and TRANSITION

SINFO THREE DEPARTURE

RWY10

Serial Number	Path Descriptor	Waypoint Identifier	Fly Over	Course °M(°T)	Magnetic Variation	Distance (NM)	Turn Direction	Altitude (FT)	Speed (KIAS)	Vertical Angle	Navigation Specification
001	VA	-	-	098 (090.0)	-8.1	-	-	+1500	-	-	RNP1
002	DF	OA021	Y	-	-8.1	-	-	-	-	-	RNP1
003	DF	AKANA	-	-	-8.1	-	L	+11000	-	-	RNP1
004	TF	SINFO	-	359 (350.7)	-8.1	14.4	-	-	-	-	RNP1

RWY28

Serial Number	Path Descriptor	Waypoint Identifier	Fly Over	Course °M(°T)	Magnetic Variation	Distance (NM)	Turn Direction	Altitude (FT)	Speed (KIAS)	Vertical Angle	Navigation Specification
001	VA	-	-	278 (270.0)	-8.1	-	-	+1600	-	-	RNP1
002	DF	OA811	Y	-	-8.1	-	-	-	-	-	RNP1
003	DF	AKANA	-	-	-8.1	-	R	+11000	-	-	RNP1
004	TF	SINFO	-	359 (350.7)	-8.1	14.4	-	-	-	-	RNP1

STAGE TRANSITION

Serial Number	Path Descriptor	Waypoint Identifier	Fly Over	Course °M(°T)	Magnetic Variation	Distance (NM)	Turn Direction	Altitude (FT)	Speed (KIAS)	Vertical Angle	Navigation Specification
001	IF	SINFO	-	-	-8.1	-	-	-	-	-	RNP1
002	TF	STAGE	-	359 (350.6)	-8.1	23.2	-	-	-	-	RNP1

CHANGE : Navigation Specification(Basic RNP1 → RNP1).