

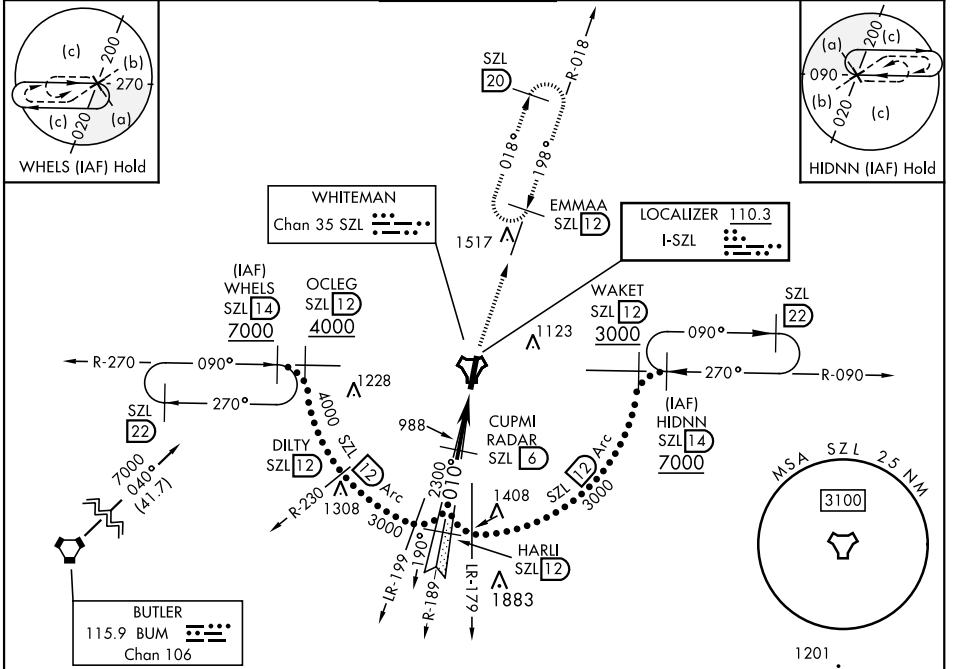
KNOB NOSTER, MISSOURI

HI-ILS or LOC Z RWY 1

LOC I-SZL 110.3	APCH CRS 010°	Rwy Idg 12,400 TDZE 837 Arprt Elev 871	AL-496 [USAF]	WHITEMAN AFB (KSZL)
---------------------------	-------------------------	---	---------------	---------------------

RADAR or DME required.	ALSIF-1 (A1)	MISSED APPROACH: Climb to 3000 via SZL TACAN R-018 to EMMAA and hold.
<p>▼ * When ALS inop, increase CAT CDE RVR to 40 and vis to 3/4 mile.</p> <p>** When ALS inop, increase CAT CDE vis to 1/4 miles.</p> <p>*** Circling not authorized W of Rwy 1-19.</p>		

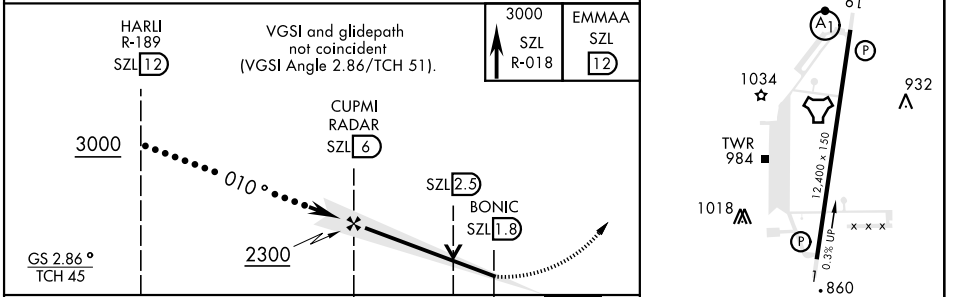
ATIS ★ 118.725 239.025	APP CON ★ 127.45 284.0	TOWER ★ 132.4 318.8	GND CON ★ 119.125 275.8	CLNC DEL ★ 121.75 335.8	ASR
----------------------------------	----------------------------------	-------------------------------	-----------------------------------	-----------------------------------	-----



NC-3, 20 MAR 2025 to 17 APR 2025

NC-3, 20 MAR 2025 to 17 APR 2025

EMERG SAFE ALT 100 NM 4700



	ELEV 871	TDZE 837	
CATEGORY	C	D	E
S-ILS 1*	1037/24	200	(200-1/2)
S-LOC 1**	1260/40	423	(400-3/4)
CIRCLING ***	1340-1 1/2 469 (500-1 1/2)	1460-2	589 (600-2)

FAF to MAP 4.2 NM					
Knots	120	140	160	180	200
Min:Sec	2:06	1:48	1:35	1:24	1:16

KNOB NOSTER, MISSOURI 38°44'N-93°33'W WHITEMAN AFB (KSZL)

HI-ILS or LOC Z RWY 1