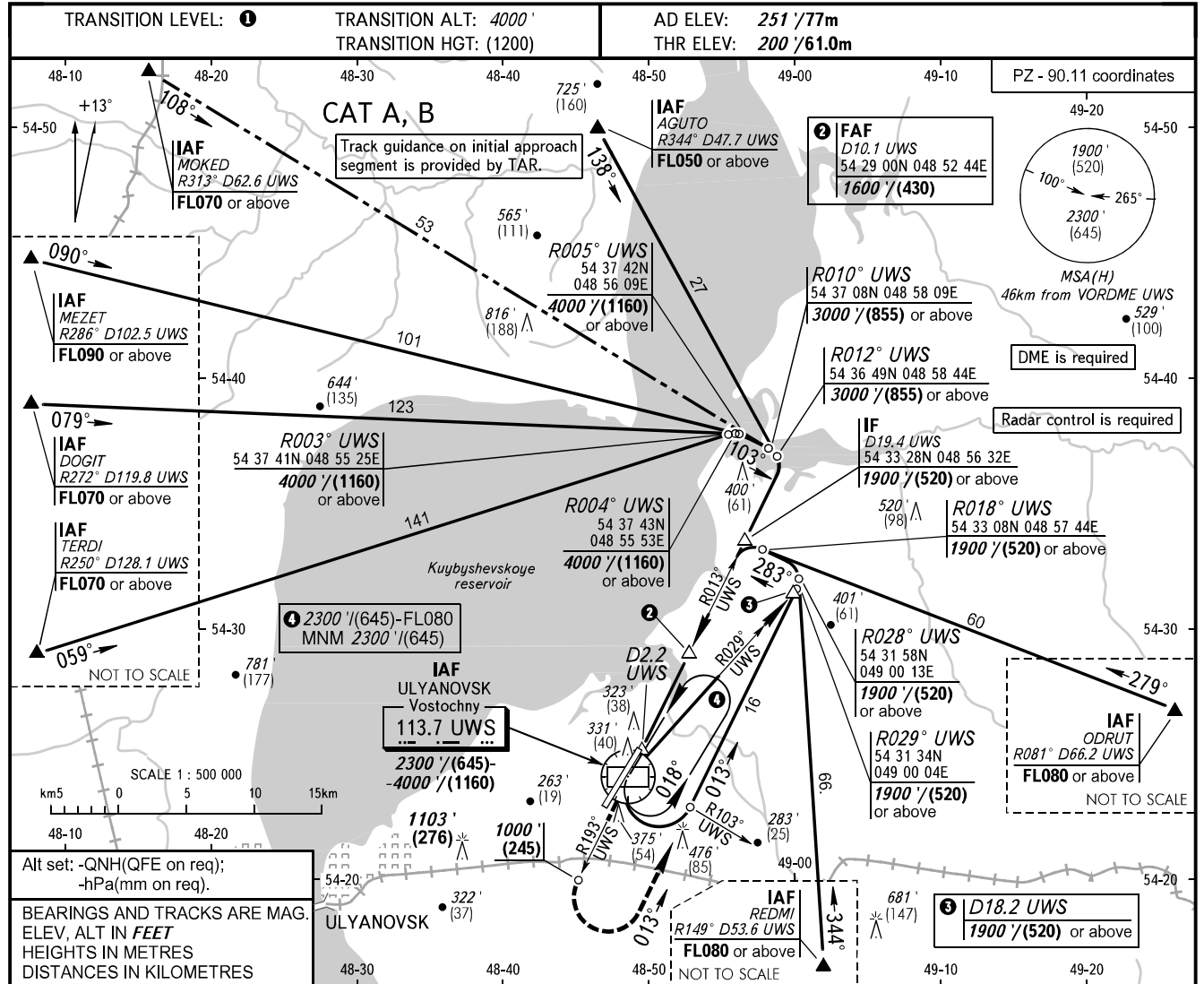


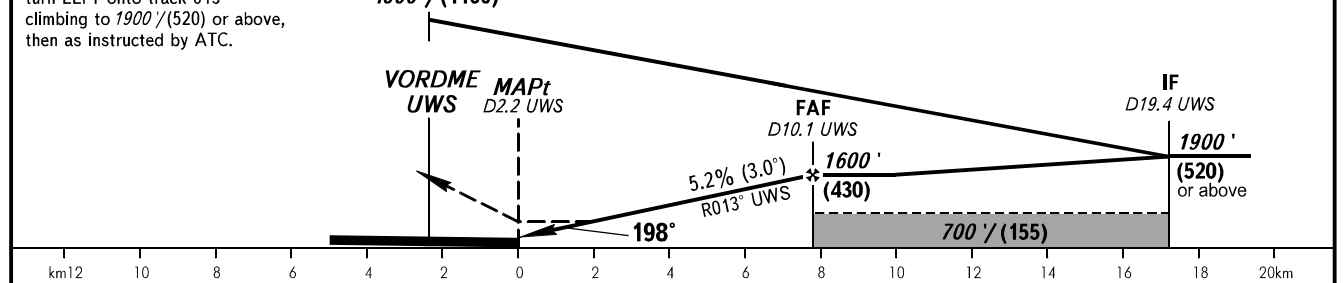
**INSTRUMENT  
APPROACH  
CHART - ICAO**

VOSTOCHNY TOWER 124.200

**ULYANOVSK, RUSSIA  
VOSTOCHNY  
VOR Y RWY 20**



MISSED APPROACH Climb straight ahead to 1000' / (245), turn LEFT onto track 013° climbing to 1900' / (520) or above, then as instructed by ATC.	IAF	2300' / (645)- -4000' / (1160)	DME UWS	5.0	7.0	9.0
			ALTITUDE/HEIGHT	730' / (162)	1070' / (266)	1410' / (369)



OCA(H)		A	B	C	D						
Straight-in	Approach	570' (370') (115)	570' (370') (115)								
	Circling	680' (420') (135)	750' (500') (155)								
GROUND SPEED	km/h		150	180	210	240	270	300	330	360	390
	kt		81	97	113	130	146	162	178	194	211
RATE OF DESCENT	m/s		2.2	2.6	3.0	3.5	3.9	4.3	4.8	5.2	5.6
	ft/min		427	512	597	682	768	853	938	1024	1109

- 1** TRANSITION LEVEL:  
- FL050 when QNH is 977 hPa (733mm mercury column) or above;  
- FL060 when QNH is less than 977 hPa (733mm mercury column).
- WARNING:**  
1. Visual manoeuvring north-west of the aerodrome is PROHIBITED.  
2. Final approach segment is offset by 5° from RCL.