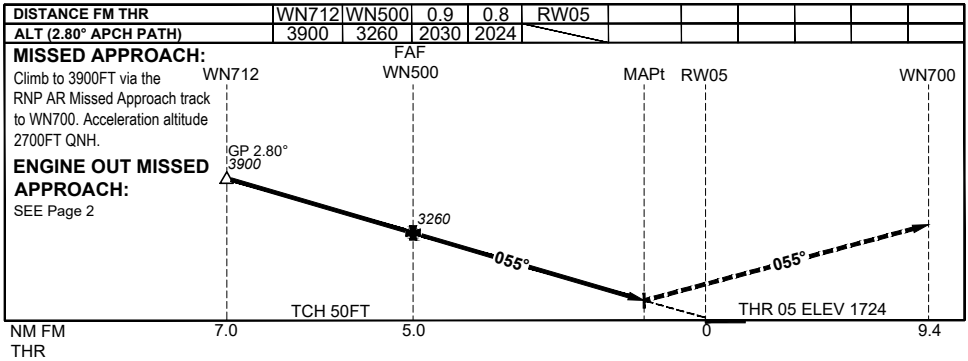
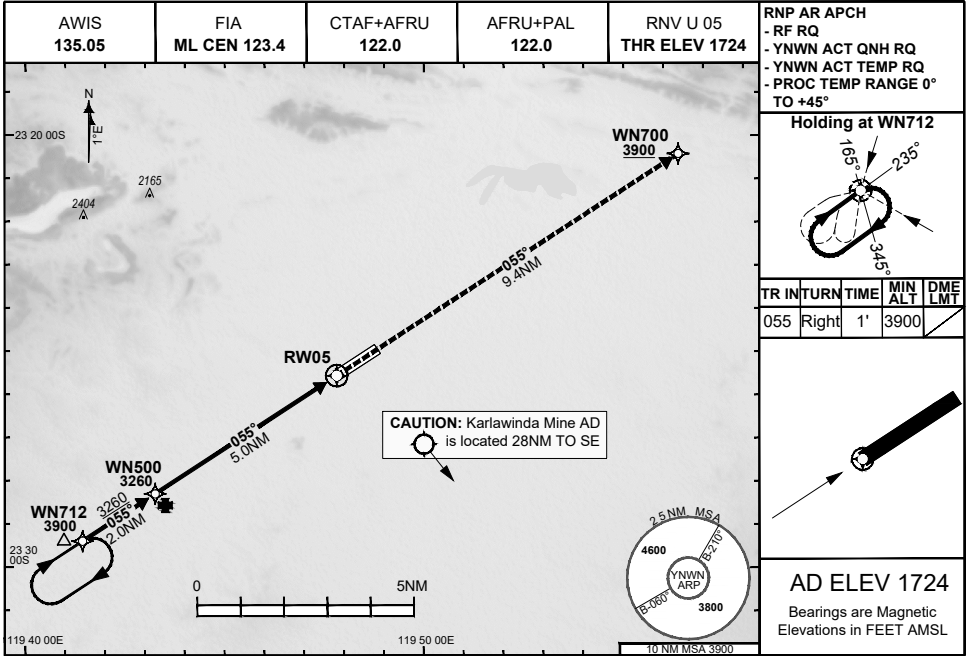


**FOR CASA APPROVED  
OPERATORS ONLY  
USE QNH**

**28 NOV 2024**



**NOTES**

CATEGORY	A	B	C	D
RNP (0.10)	NOT APPLICABLE		DA(H) <b>2024'</b> (300)-1.6	
RNP (0.30)	NOT APPLICABLE		DA(H) <b>2030'</b> (306)-1.6	
CIRCLING	NOT AUTHORISED			

- 1) Lateral transition to MAP must not be initiated prior to DA(H) PSN.
- 2) PAPI and glidepath not coincident.
- 3) Minimum MAP gradient (All Engines) 3.3% to 3900FT.

202407301653 General Electric Company Proprietary & Confidential Information

Changes: Revised frequency box, Editorial.

NWNGN11-181

**DO NOT USE FOR NAVIGATION**

Prepared by GE Aerospace

