

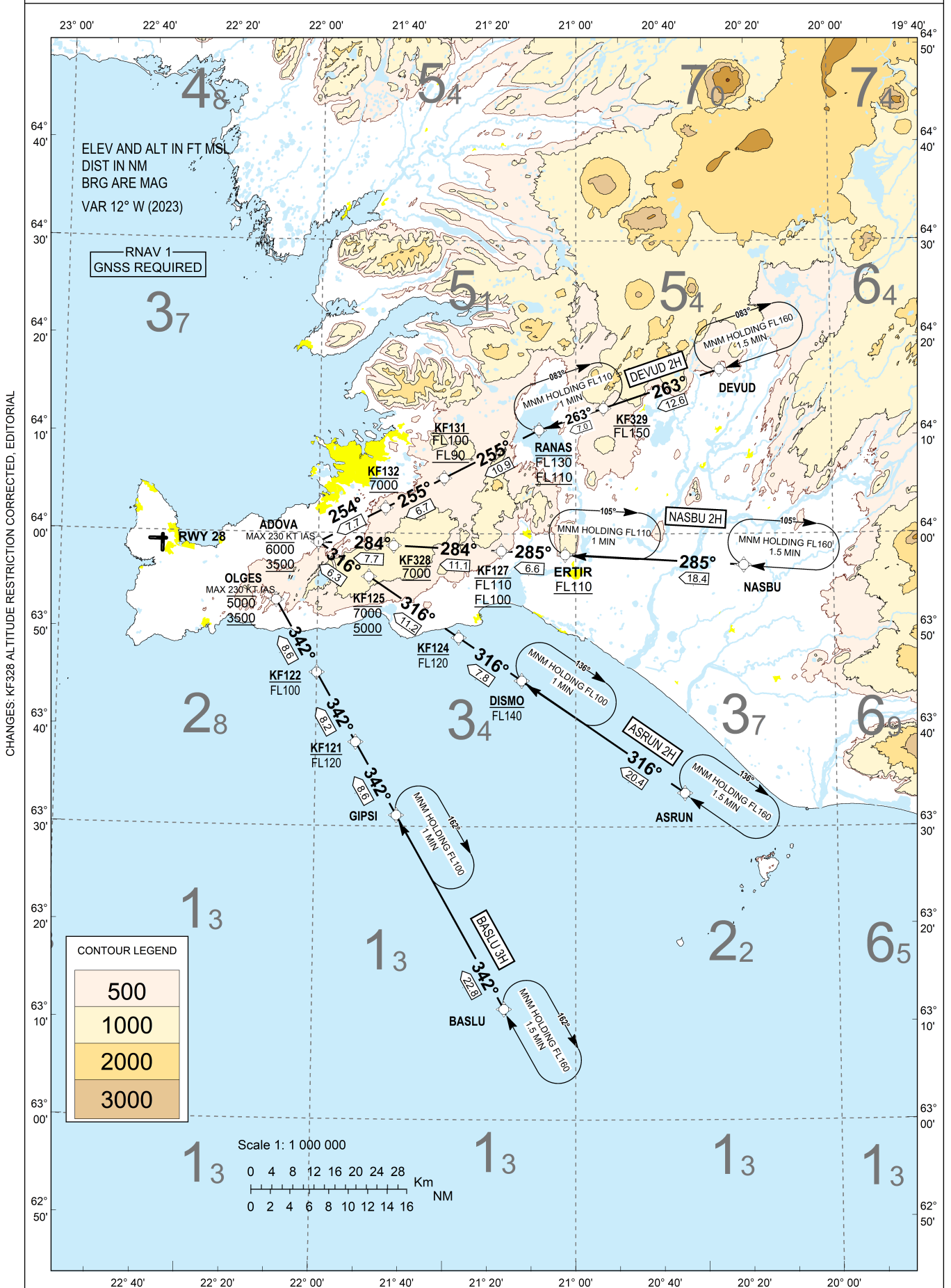
KEFLAVIK RNAV STAR RWY 28 (East)

STANDARD ARRIVAL CHART -  
INSTRUMENT (STAR) - ICAO  
CONTINUOUS DESCENT ARRIVALS

TRANSITION  
ALTITUDE 7000  
AD ELEV 170

ATIS	128.300
APP	119.300
TWR	118.300
ACC	119.700

BIKF - KEFLAVIK  
RNAV STAR RWY 28  
DEVUD 2H, NASBU 2H, ASRUN 2H, BASLU 3H



STANDARD ARRIVAL ROUTES - INSTRUMENT (STAR) - ICAO CONTINUOUS DESCENT ARRIVALS (RNAV1 STAR BASED ON GNSS)		BIKF - KEFLAVIK  RNAV STAR RWY 28		
<b>GENERAL:</b>		RNAV1(GNSS) approval required. Vectoring may be used when necessary. Loss of RNAV1 capability - Advise ATC. Maximum speed below FL100: 250 kt IAS unless otherwise stated under RESTRICTIONS or instructed by ATC.		
<b>RADIO COMMUNICATION FAILURE:</b>		Set transponder to A 7600. Follow cleared or expected STAR until IAF, then start approach to assigned runway without delay.		
<b>NON RNAV 1 ACFT:</b>		State "UNABLE RNAV 1", expect radar vectoring.		
<b>NOTE:</b>		At first contact with KEFLAVIK APPROACH state callsign and ATIS received only. Change to Keflavik QNH at Transition Level or when passing last Flight Level restriction if higher.		
DESIGNATOR	ROUTE	RESTRICTIONS	DESCEND	CLEARANCE LIMIT
DEVUD 2H	From DEVUD to KF329 to RANAS to KF131 to KF132 to ADOVA	Cross KF329 at or below FL150, cross RANAS between FL130 and FL110, cross KF131 between FL100 and FL090, cross KF132 at 7000, cross ADOVA between 6000 and 3500 speed 230 KT IAS or less at ADOVA	As cleared by ATC	ADOVA
NASBU 2H	From NASBU to ERTIR to KF127 to KF328 to ADOVA	Cross ERTIR at or above FL110, cross KF127 between FL110 and FL100, cross KF328 at 7000 FT, cross ADOVA between 6000 and 3500 speed 230 KT IAS or less at ADOVA	As cleared by ATC	ADOVA
ASRUN 2H	From ASRUN to DISMO to KF124 to KF125 to ADOVA	Cross DISMO at or below FL140, cross KF124 at or below FL120, cross KF125 at or between 7000 and 5000, cross ADOVA between 6000 and 3500 speed 230 KT IAS or less at ADOVA	As cleared by ATC	ADOVA
BASLU 3H	From BASLU to GIPSI to KF121 to KF122 to OLGES	Cross KF121 at or below FL120, cross KF122 at or below FL100, cross OLGES between 5000 and 3500, speed 230 KT IAS or less at OLGES	As cleared by ATC	OLGES

CHANGES: EDITORIAL