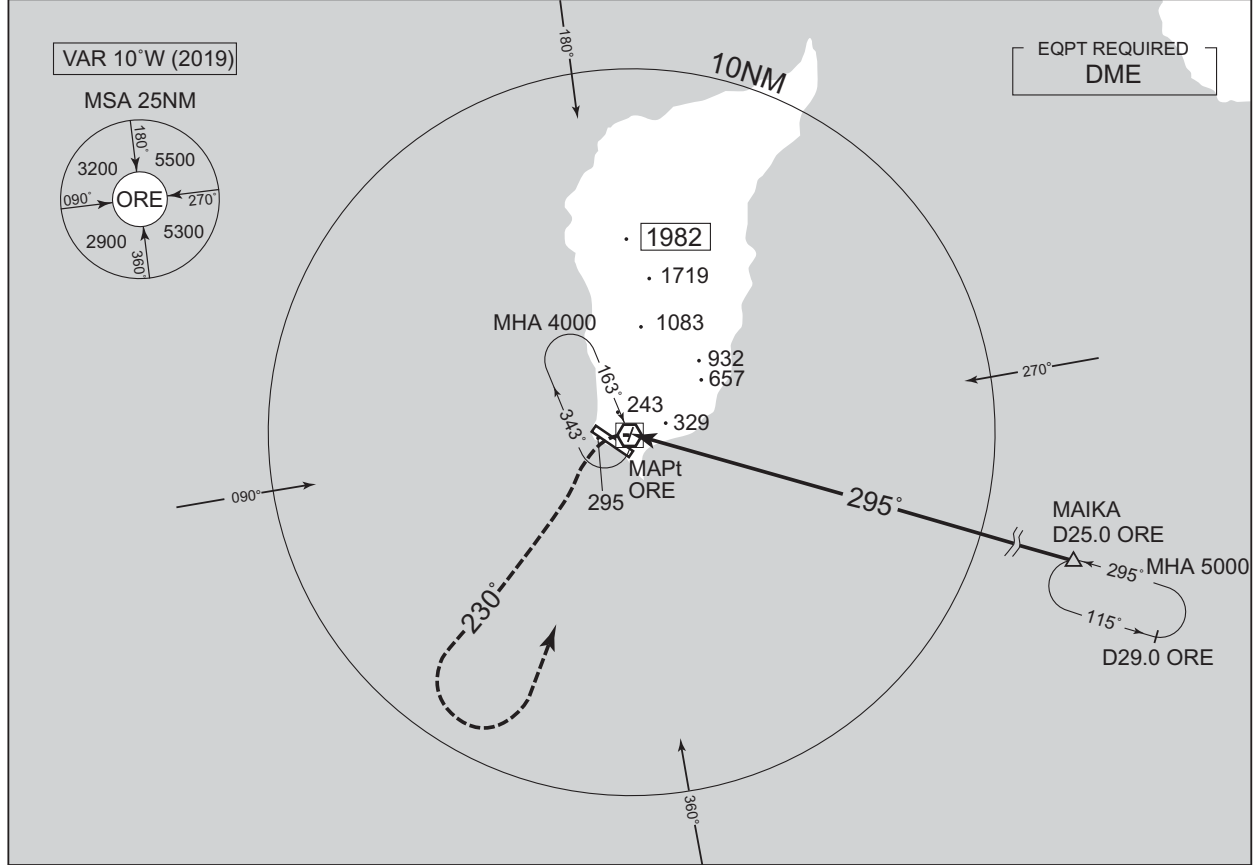


INSTRUMENT APPROACH CHART

RJEO / OKUSHIRI

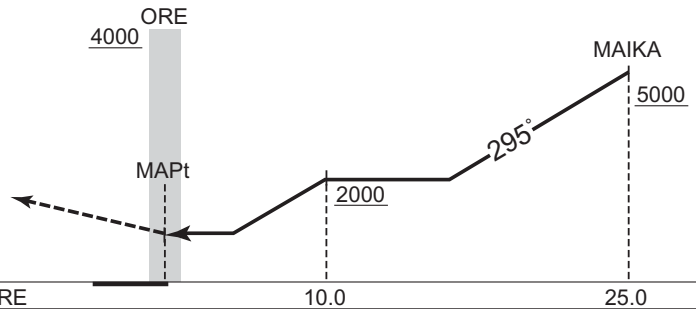
VOR A

<p>TOKYO CONTROL 119.3 – 276.5 134.25 – 260.4</p>	<p>OKUSHIRI VOR/DME 109.85 ORE CH-35Y $\overline{---}$ 42°04'13"N / 139°26'36"E</p>	<p>OKUSHIRI RADIO 122.7 AFIS provided by New Chitose Airport Office</p>	<p>NO RADAR</p>
---	--	---	-----------------



MISSED APPROACH

Turn left, climb to 3000FT or above via ORE R230, turn left direct to ORE VOR/DME within ORE 10.0DME and hold at 4000FT. Contact OKUSHIRI RADIO.



MINIMA		AD elev. 161
CAT	CIRCLING	
	MDA(H)	VIS
A	960 (799)	1600
B		2400
C	-	-
D		-

Circling to SOUTH side of RWY only.

CHANGE : ATC call sign.