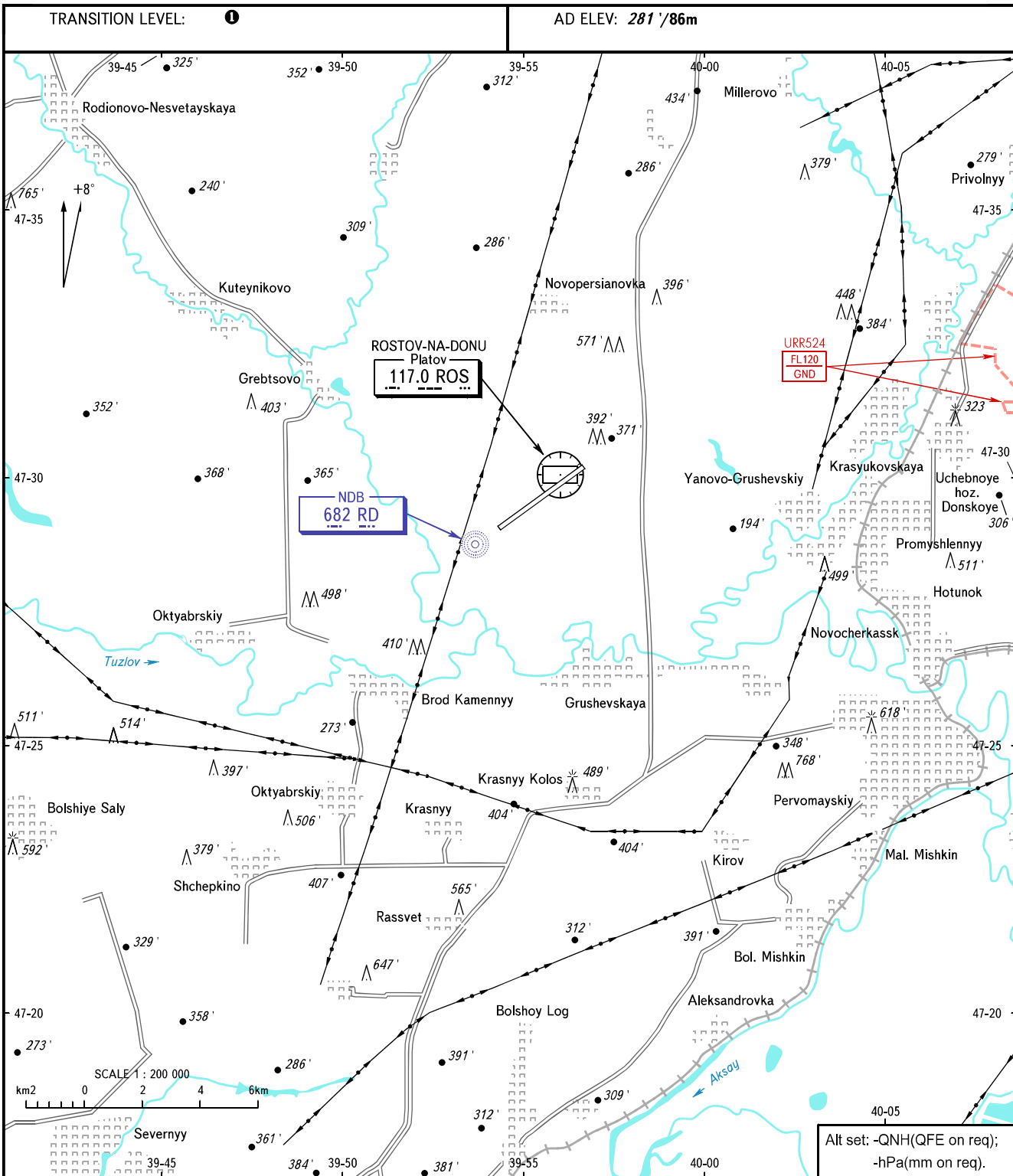


VISUAL  
APPROACH  
CHART - ICAO

PLATOV RADAR	121.200
PLATOV TOWER	119.700

ROSTOV-NA-DONU, RUSSIA  
PLATOV  
RWY 05/23



① TRANSITION LEVEL:  
 - FL050 when QNH is 996 hPa (747mm mercury column) or above;  
 - FL060 when QNH is 960 hPa (720mm mercury column) or above, but less than 996 hPa (747mm mercury column).

CHANGE: Heading