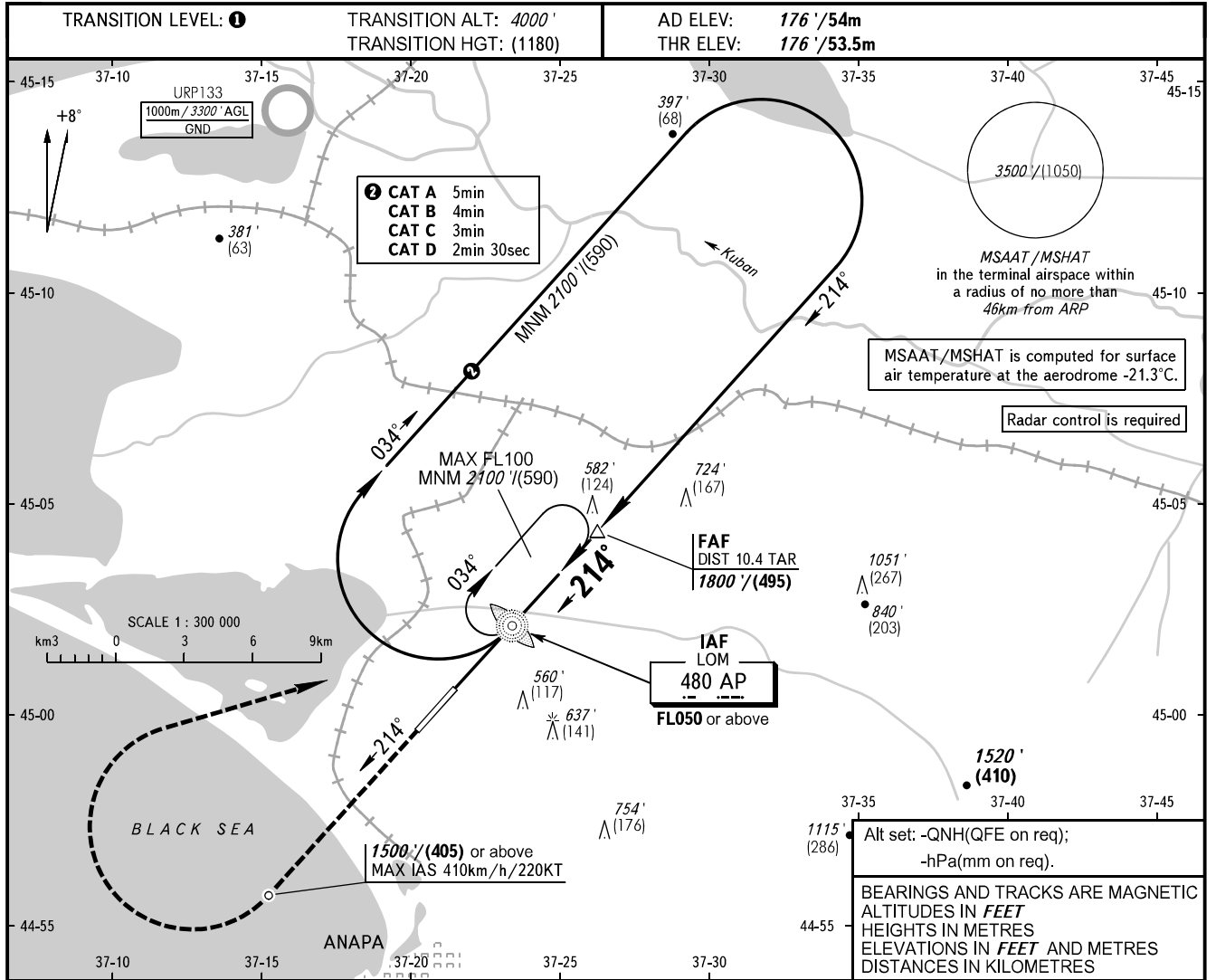


**INSTRUMENT
APPROACH
CHART - ICAO**

ANAPA RADAR 118.700
ANAPA TOWER 119.800

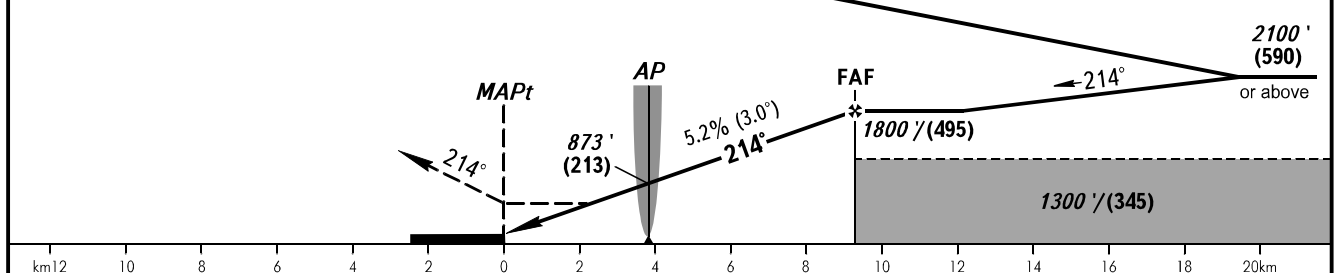
ANAPA, RUSSIA
VITYAZEVO
NDB Z RWY 21



MISSED APPROACH
Climb straight ahead to 1500'/(405) or above, turn RIGHT to LOM AP climbing to 2100'/(590) or above.

IAF
FL050 or above

FAF is fixed by TAR - DIST 10.4km.



OCA(H)		A	B	C	D						
Straight-in	Approach	830' (650') (200)	830' (650') (200)	830' (650') (200)	830' (650') (200)						
	Circling	860' (680') (210)	940' (760') (235)	1040' (860') (265)	1150' (980') (300)						
GROUND SPEED		km/h	150	180	210	240	270	300	330	360	390
		kt	81	97	113	130	146	162	178	194	211
FAF - MAPt 9200m		min:sec	3:42	3:05	2:38	2:18	2:03	1:51	1:41	1:32	1:25
RATE OF DESCENT		m/s	2.2	2.6	3.0	3.5	3.9	4.3	4.8	5.2	5.6
		ft/min	427	512	597	682	768	853	938	1024	1109

1 TRANSITION LEVEL:
- FL050 when QNH is 1013 hPa (760mm mercury column) or above;
- FL060 when QNH is 977 hPa (733mm mercury column) or above, but less than 1013 hPa (760mm mercury column);
- FL070 when QNH is less than 977 hPa (733mm mercury column).

WARNING
Turn before passing MAPt is PROHIBITED.