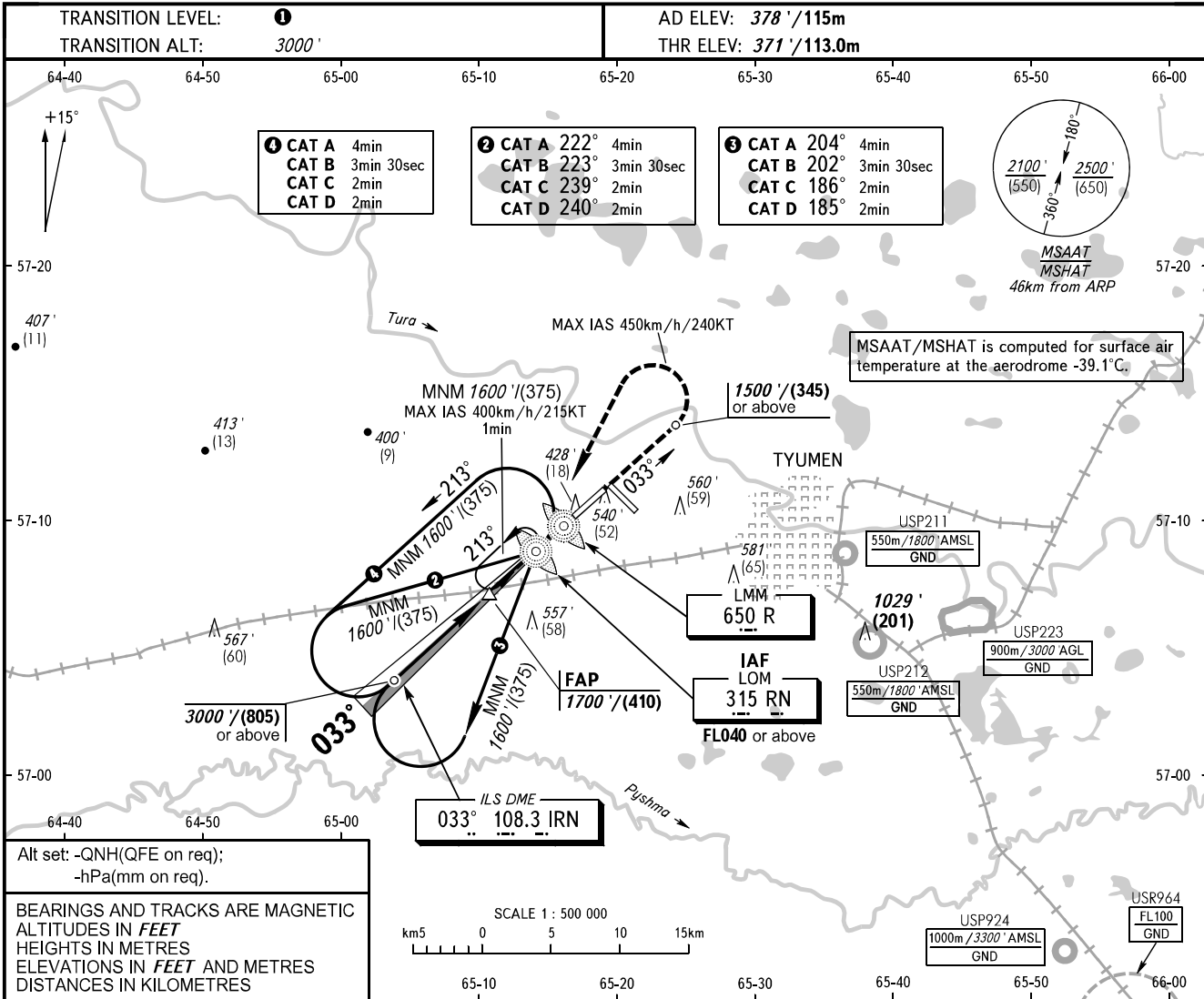


**INSTRUMENT  
APPROACH  
CHART - ICAO**

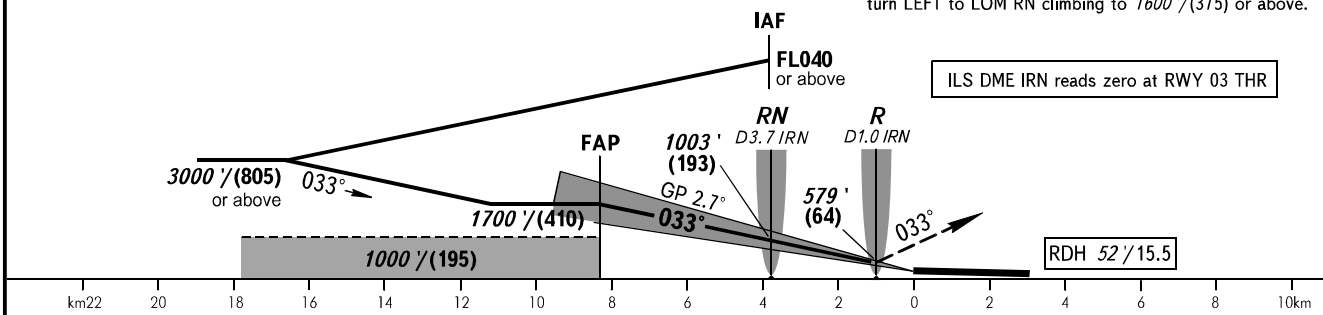
**TYUMEN, RUSSIA  
ROSHCHINO  
ILS X CAT I RWY 03**

RADAR **126.100**  
START **118.200**



DME IRN	6.0	4.0	2.0
ALTITUDE/HEIGHT	1351'/(299)	1042'/(205)	733'/(111)

**MISSED APPROACH**  
Climb on track 033° to 1500'/(345) or above, then turn LEFT to LOM RN climbing to 1600'/(375) or above.



OCA(H)		A	B	C	D	① TRANSITION LEVEL: - FL040 when QNH is 1013 hPa (760mm mercury column) or above; - FL050 when QNH is 977 hPa (733mm mercury column) or above, but less than 1013 hPa (760mm mercury column); - FL060 when QNH is less than 977 hPa (733mm mercury column).				
Straight-in Approach	<b>CAT I</b>	571' (200') (60)	571' (200') (60)	578' (207') (64)	589' (218') (67)					
Circling		840' (460') (145)	870' (500') (155)	970' (600') (180)	1070' (690') (215)					
GROUND SPEED	km/h	150	180	210	240	270	300	330	360	390
	kt	81	97	113	130	146	162	178	194	211
RATE OF DESCENT	m/s	1.9	2.3	2.7	3.1	3.5	3.9	4.3	4.7	5.0
	ft/min	374	453	532	610	689	768	847	925	984

CHANGE: New chart