

STANDARD DEPARTURE CHART - INSTRUMENT

RORS / SHIMOJISHIMA

SID

MIYAKOJIMA FOUR DEPARTURE

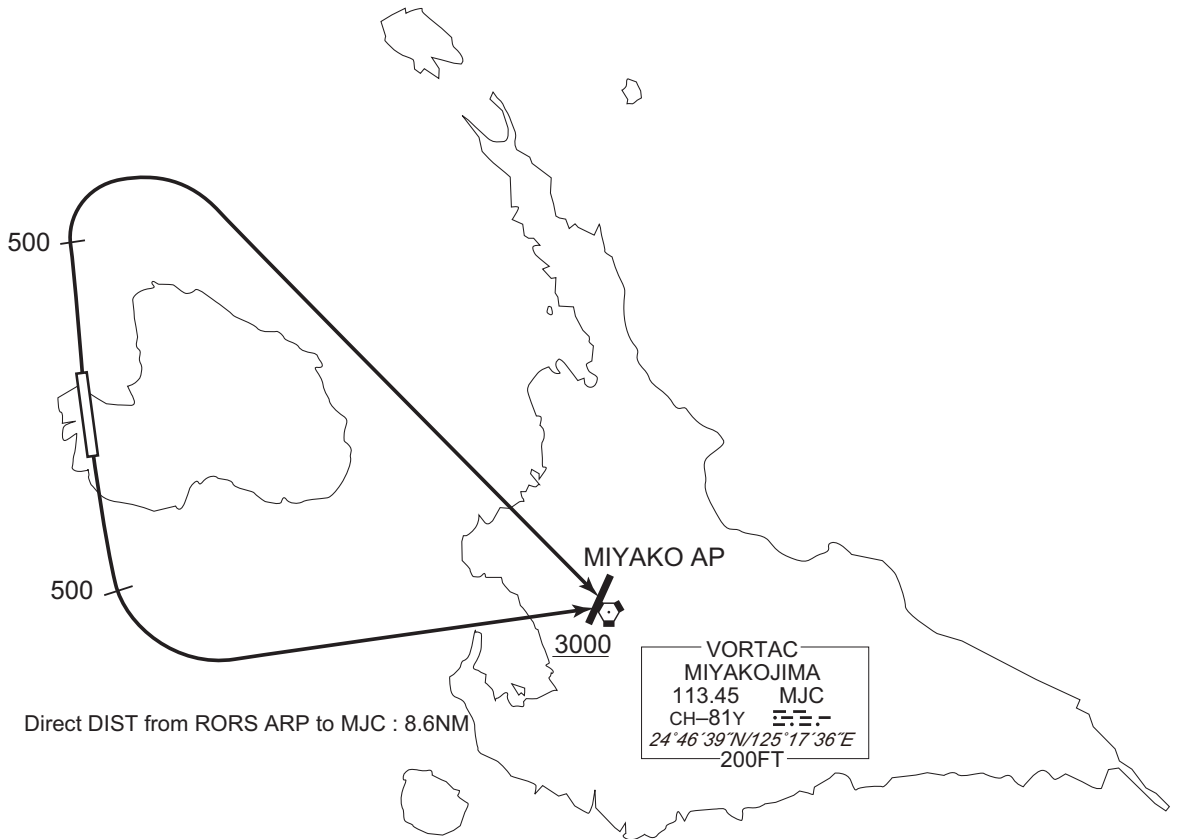
RWY17 : Climb RWY HDG to 500FT, turn left,...

RWY35 : Climb RWY HDG to 500FT, turn right,...

...direct to MJC VORTAC. Cross MJC VORTAC at or above 3000FT.

Note RWY17 : 5.0% climb gradient required up to 500FT.

OBST ALT 93FT located at 0.2NM 162° FM end of RWY17.



CHANGE : OBST.