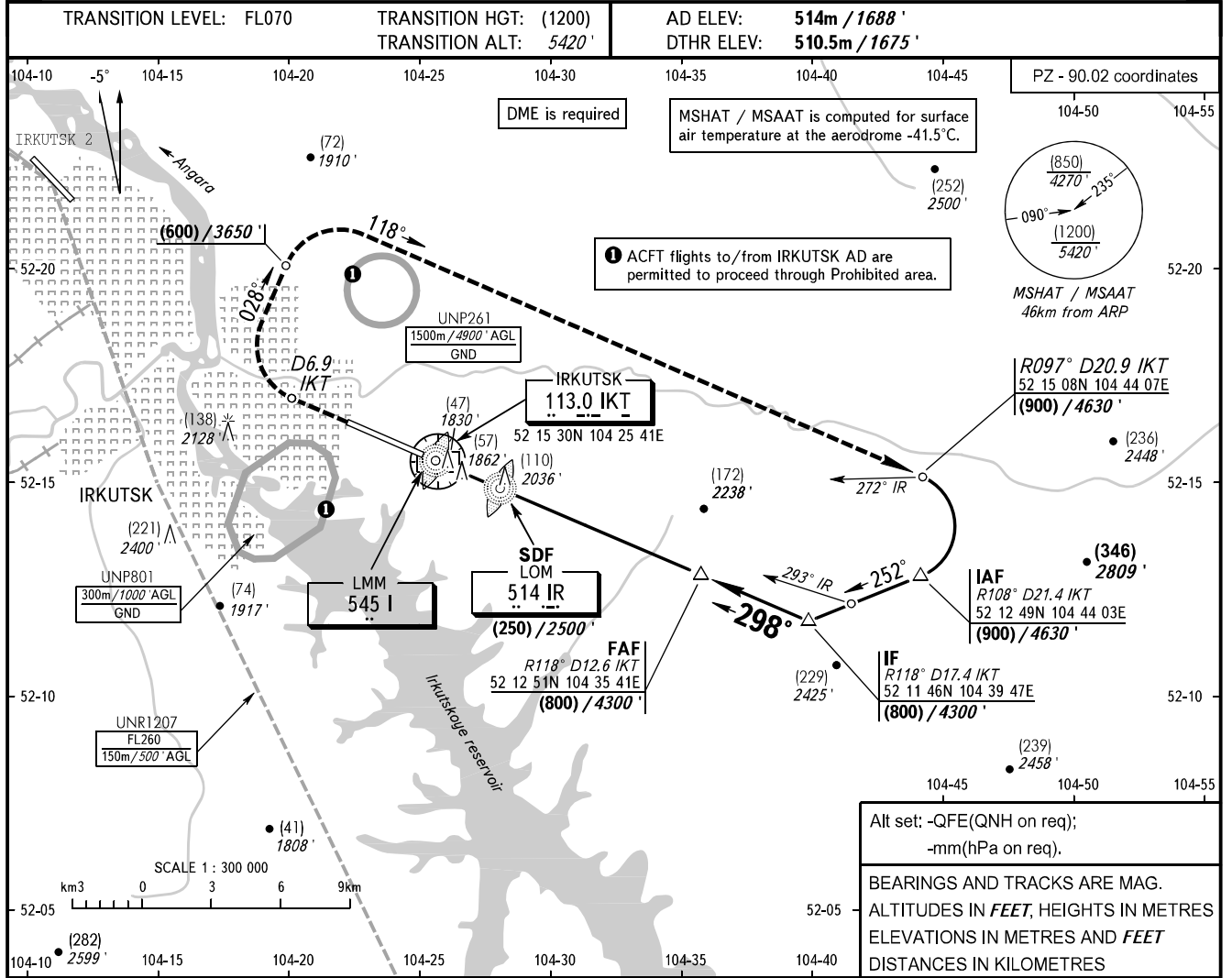


**INSTRUMENT
APPROACH
CHART - ICAO**

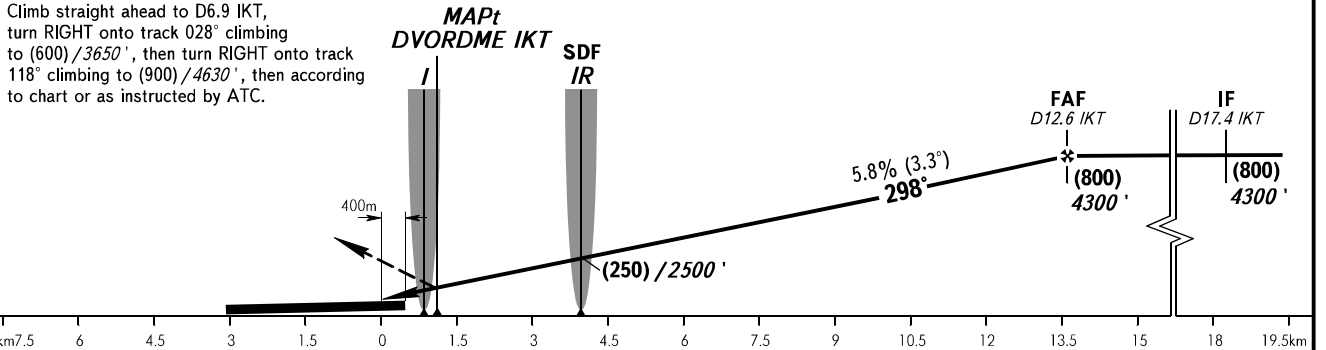
**IRKUTSK, RUSSIA
IRKUTSK
DVOR RWY 30**

RADAR **119.300**
TOWER **118.100**



MISSED APPROACH

Climb straight ahead to D6.9 IKT, turn RIGHT onto track 028° climbing to (600)/3650', then turn RIGHT onto track 118° climbing to (900)/4630', then according to chart or as instructed by ATC.



OCA(H)		A	B	C	D								
Straight-in Approach	With SDF	630 (120) 2060' (390')	630 (120) 2060' (390')	630 (120) 2060' (390')	630 (120) 2060' (390')								
	WO SDF	715 (205) 2340' (670')	715 (205) 2340' (670')	715 (205) 2340' (670')	715 (205) 2340' (670')								
Circling		715 (205) 2340' (670')	715 (205) 2340' (670')	770 (255) 2530' (840')	855 (340) 2800' (1110')								
GROUND SPEED		km/h	150	180	210	240	270	300	330	360	390	420	450
RATE OF DESCENT		m/s	2.4	2.9	3.4	3.9	4.4	4.8	5.3	5.8	6.3	6.8	7.3

WARNING
MAPt at DVORDME IKT.
Timing not authorized for defining MAPt.