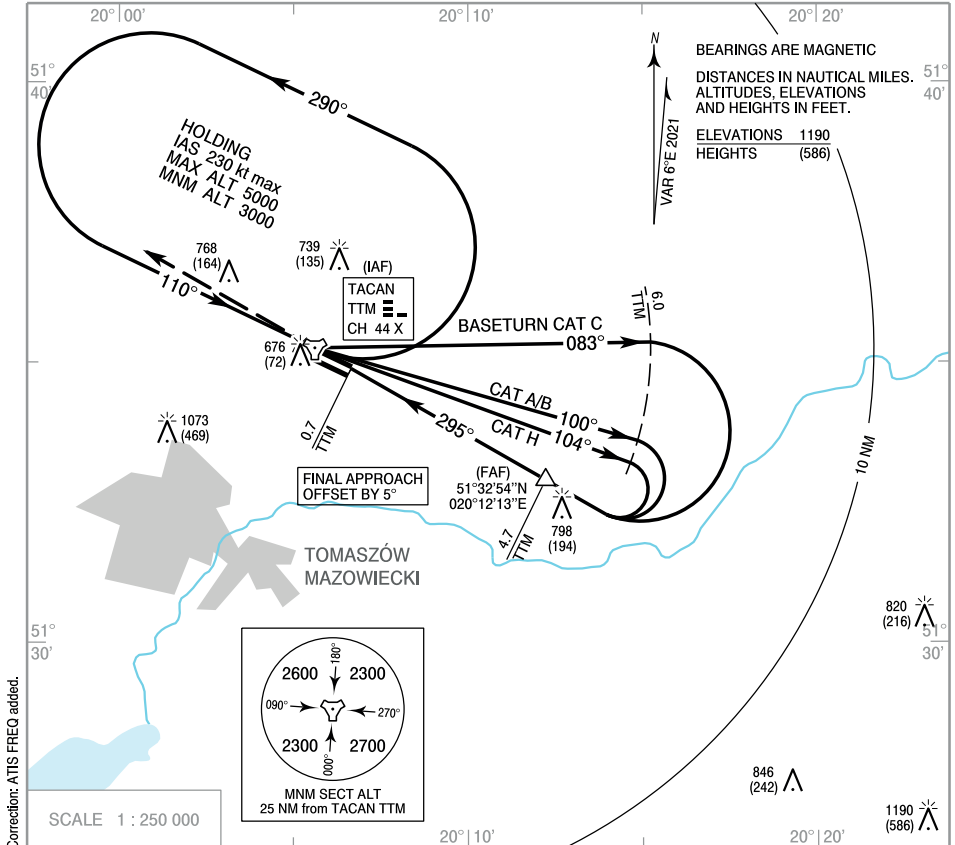


**INSTRUMENT
APPROACH
CHART - ICAO**

AERODROME ELEV 604 ft
THR RWY 29 ELEV 601 ft
HEIGHTS RELATED TO AD ELEV

Tomaszów APPROACH 130,250
Tomaszów TOWER 125,000
ATIS 127,885

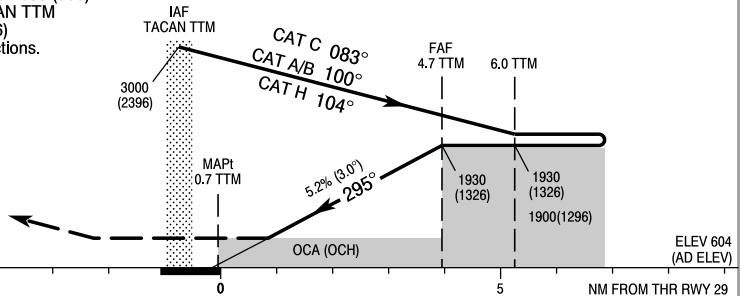
**TOMASZÓW MAZOWIECKI
TACAN
RWY 29 (CAT A/B/C/H)**



MISSED APPROACH

Climb straight ahead to 1600 (996)
then turn right to TACAN TTM
climbing to 3000 (2396)
and follow ATC instructions.

TRANSITION ALTITUDE 6500



| Cat. of ACFT | OCA (OCH) | | | | Distance FAF - MAPt 4.0 NM | | | | | |
|--------------|------------|------------|------------|------------|----------------------------|------|------|------|------|------|
| | A | B | C | H | 60 | 80 | 100 | 120 | 140 | 160 |
| Straight-in | 994 (390) | 994 (390) | 994 (390) | 994 (390) | 4:00 | 3:00 | 2:25 | 2:00 | 1:40 | 1:30 |
| | | | | | Rate of descent | 320 | 420 | 530 | 630 | 740 |
| Circling | 1084 (480) | 1104 (500) | 1474 (870) | 1084 (480) | Dist. to TTM | 4.7 | 4.0 | 3.0 | 2.0 | 1.8 |
| | | | | | Altitude | 1930 | 1710 | 1395 | 1080 | 994 |

**INSTRUMENT
APPROACH
CHART - ICAO**

**TOMASZÓW MAZOWIECKI
TACAN
RWY 29 (CAT A/B/C/H)**

| FIX / POINT | LATITUDE | LONGITUDE | FIX FORMATION | |
|-------------------------------------|--------------|---------------|--|----------------------|
| IAF TACAN TTM | 51°35'15.4"N | 020°05'36.6"E | | |
| FAF | 51°32'54.0"N | 020°12'13.0"E | 121.00° GEO (115° MAG) TACAN TTM | 4.74 NM TACAN TTM |
| MAPt | 51°34'53.2"N | 020°06'38.9"E | 121.00° GEO (115° MAG) TACAN TTM | 0.74 NM TACAN TTM |
| Final approach descent angle: 3.00° | | | | |