

STANDARD ARRIVAL CHART - INSTRUMENT (STAR) - ICAO

TRANSITION ALT 6000 FT

APP Pescara APP 120.050  
TWR Pescara TWR 118.450

AMGOK 2A BAVOM 2A DIVKU 2A  
EKMIL 2A ERPOG 2A ETRIN 2A  
IDLLOL 2A INKIM 2A OTRET 2A

ATC DISCRETION

PESCARA (LIBP)  
STAR RNP1 RWY22

**LEGEND**

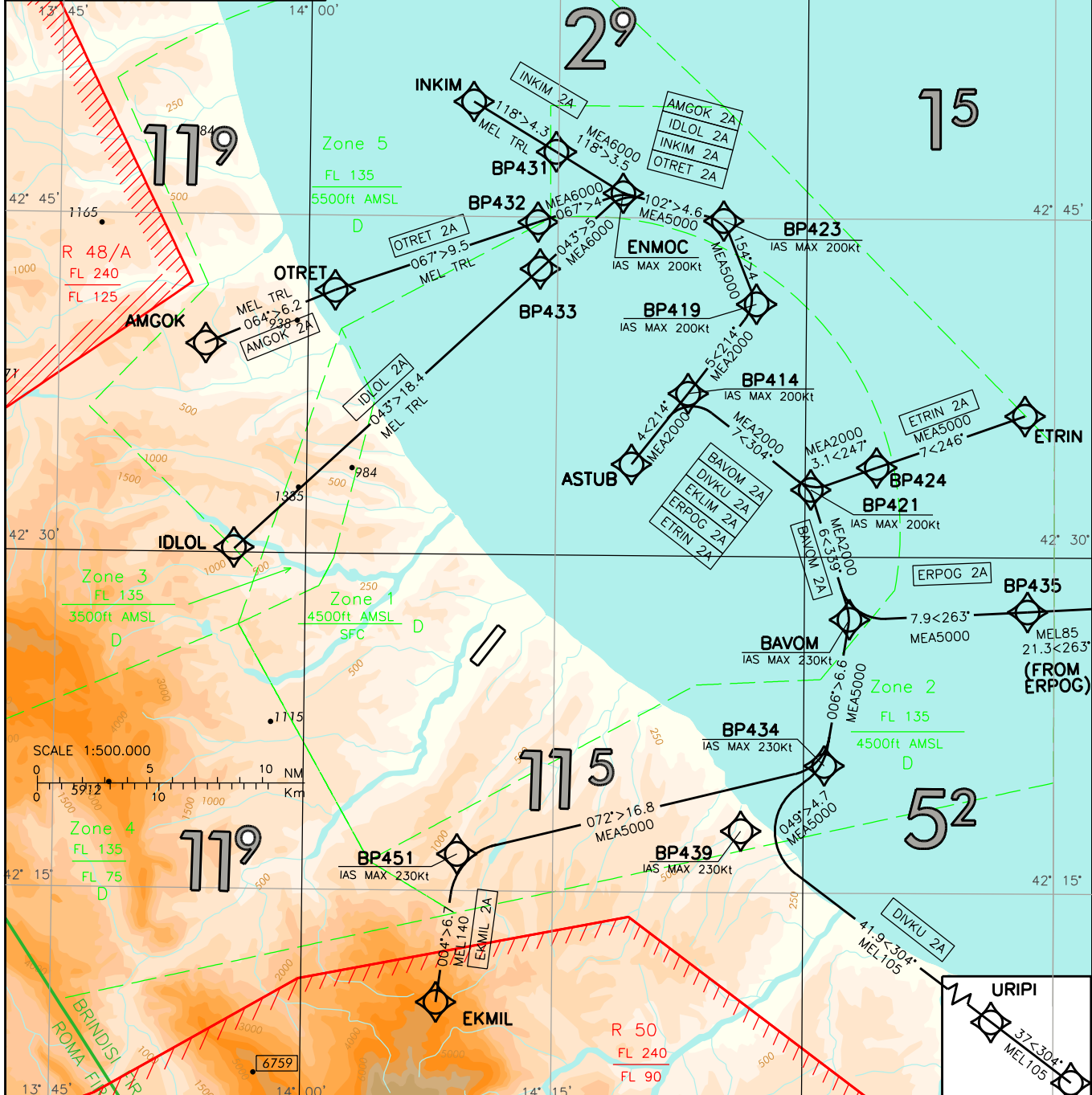
STAR ATC discretion →

Not to Scale →

**AIRSPACE CLASSIFICATION**  
See AIP - ENR 1.4

**ELEV. ALT IN FEET**  
DIST IN NM  
BRG ARE MAG  
VAR 4° E

CHANGE: GEO ATIS UPDATED



MNM SECT ALT	ASTUB Holding Procedure (3)	ENMOC Holding Procedure (3)
<p>25 NM ARP</p> <p>11900</p>	<p>ASTUB</p>	<p>ENMOC</p>

**REMARK**

- (1) For RNAV system with holding functionality
- (2) For RNAV system without holding functionality
- (3) Holding Procedure with direct entry only