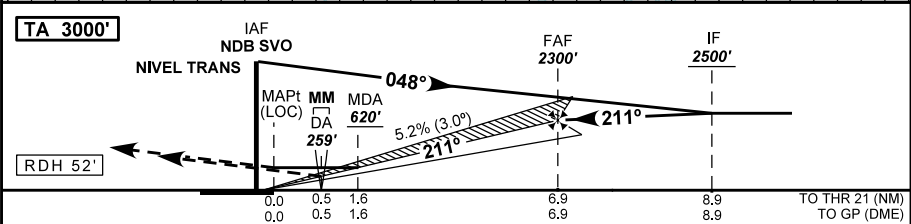
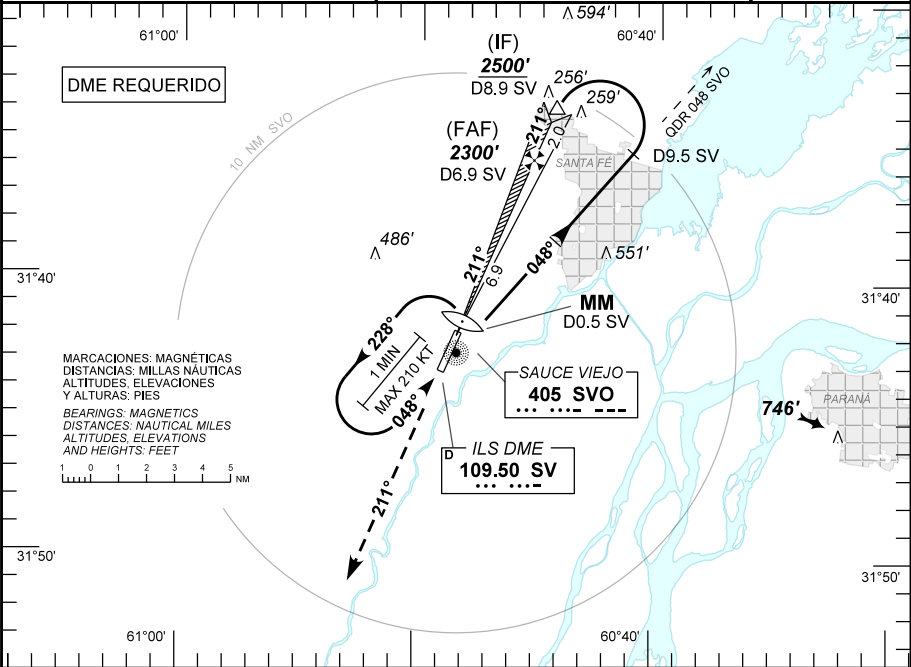


SAUCE VIEJO (SAAV)
SANTA FE

Carta de aproximación por instrumentos
Instrument approach chart

ILS RWY 21

PARANÁ CTL		SAUCE VIEJO APP		SAUCE VIEJO TWR		SAUCE VIEJO GND		EMERG
119.60	118.50	118.95	118.45 120.10	118.95	118.45 120.10	118.95	118.45 120.10	121.50
LOC SV	FINAL APCH CRS	ALTITUD MNM FAF	MDA (H)		AD Elev	59'	<div>8° W (2018)</div> <div><div></div><div>3000'</div></div> <div>MSA 25NM SVO</div>	
109.50	211°	2300' (2241')	259' (200')		THR Elev	59'		
Aproximación frustrada: ASC para 3000 ft con rumbo 211° y seguir instrucciones del ATC.								
Missed approach: Climb to 3000 ft with heading 211° and proceed as directed by ATC.								
NOTA: Nivel de Transición asignado por ATC.			RMK: Transition Level assigned by ATC.					



DIRECTA RWY 21 / <i>Straight in RWY 21</i>										Circulación Visual <i>Circle to land</i>			
CAT	ILS				LOC/DME								
	DA 259'		DH 200'		MDA 620'		MDH 561'						
	VIS ALS		VIS SIN ALS		VIS ALS		VIS SIN ALS			CAT	MDA	MDH	VIS
A	800 M RVR 550 M		1200 M		2100 M		2800 M			A	570'	511'	2800 M
B					2300 M		3000 M			B	610'	551'	2800 M
C										C	880'	821'	3700 M
D										D	880'	821'	4600 M
GS KT		90	110	130	150	160	DIST to MAPt		6.9	6	5	3	1.6
FAF - MAPt 6.9 NM		4:40	3:49	3:14	2:48	2:37	ALT		2300	2020	1700	1060	620
FPM		470	570	680	780	830	HGT		(2241)	(1961)	(1641)	(1001)	(561)

31 ENERO 2019


SAUCE VIEJO (SAAV)

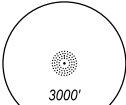
SANTA FE

Carta de aproximación por instrumentos

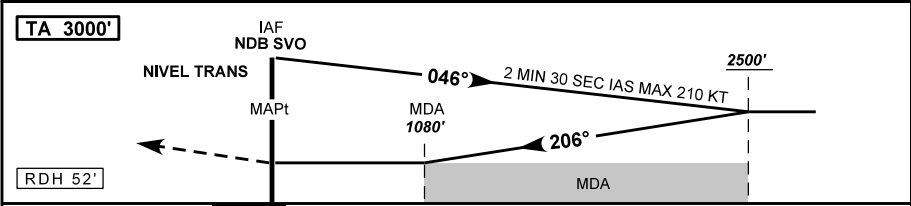
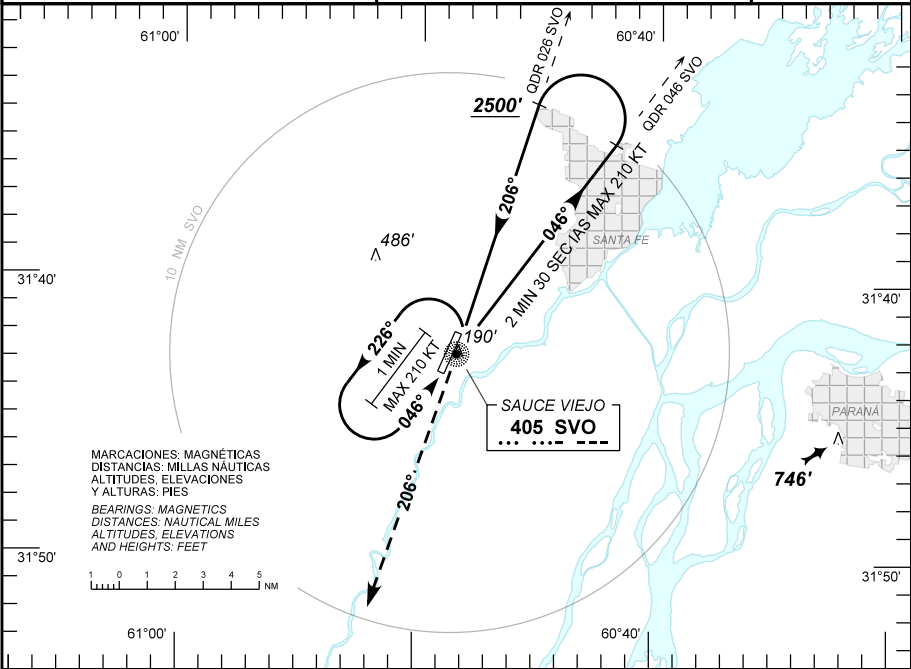
Instrument approach chart

NDB RWY 21

PARANÁ CTL		SAUCE VIEJO APP		SAUCE VIEJO TWR		SAUCE VIEJO GND		EMERG
119.60 118.50		118.95 118.45 120.10		118.95 118.45 120.10		118.95 118.45 120.10		121.50
NDB SVO	FINAL APCH CRS	SIN FAF		MDA (H)		AD Elev		<div>08° W(2018)</div> <div></div> <div>3000'</div> <div>MSA 25NM SVO</div>
405	206°	NO FAF		1080' (1021')		THR Elev		
Aproximación frustrada: ASC para 3000 ft con rumbo 206° y seguir instrucciones del ATC.								
Missed approach: Climb to 3000 ft on heading 206° and proceed as directed by ATC.								
NOTA: Nivel de Transición asignado por ATC.				RMK: Transition Level assigned by ATC.				



MSA 25NM SVO



DIRECTA RWY 21 / <i>Straight in RWY 21</i>					Circulación Visual <i>Circle to land</i>			
CAT	NDB							
	MDA 1080'	MDH 1021'						
	VIS				CAT	MDA	MDH	VIS
A	5000 M				A	1080'	1021'	5000 M
B					B	1080'	1021'	5000 M
C					C	1080'	1021'	5000 M
D					D	1080'	1021'	5000 M

SAUCE VIEJO (SAAV)

SANTA FE

Carta de aproximación por instrumentos

Instrument approach chart

NDB RWY 03

