

# AKUNA NINE DEPARTURE (RNAV)

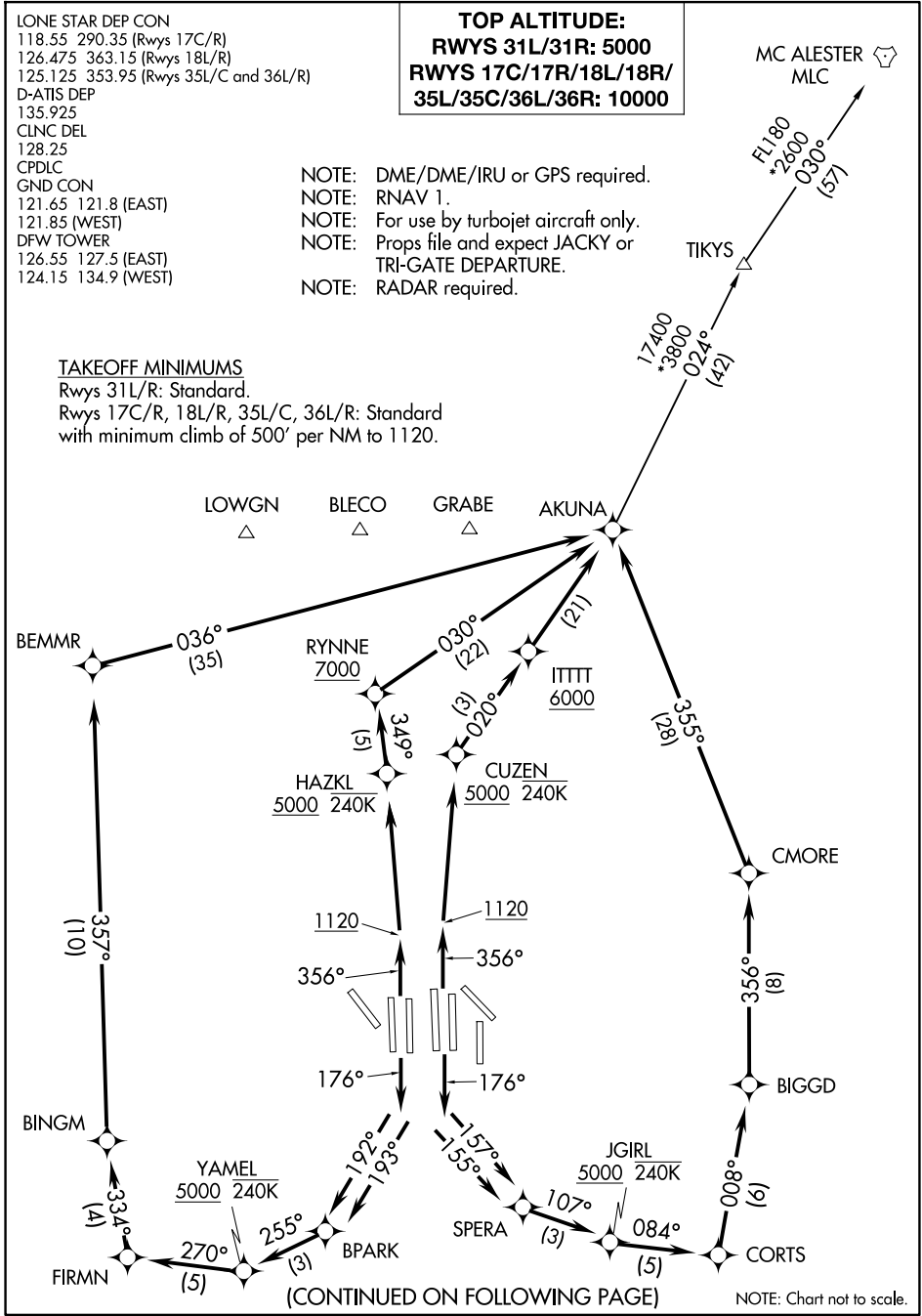
LONE STAR DEP CON  
 118.55 290.35 (Rwys 17C/R)  
 126.475 363.15 (Rwys 18L/R)  
 125.125 353.95 (Rwys 35L/C and 36L/R)  
 D-ATIS DEP  
 135.925  
 CLNC DEL  
 128.25  
 CPDLC  
 GND CON  
 121.65 121.8 (EAST)  
 121.85 (WEST)  
 DFW TOWER  
 126.55 127.5 (EAST)  
 124.15 134.9 (WEST)

**TOP ALTITUDE:**  
**RWYS 31L/31R: 5000**  
**RWYS 17C/17R/18L/18R/  
 35L/35C/36L/36R: 10000**

- NOTE: DME/DME/IRU or GPS required.
- NOTE: RNAV 1.
- NOTE: For use by turbojet aircraft only.
- NOTE: Props file and expect JACKY or TRI-GATE DEPARTURE.
- NOTE: RADAR required.

### TAKEOFF MINIMUMS

Rwys 31L/R: Standard.  
 Rwys 17C/R, 18L/R, 35L/C, 36L/R: Standard  
 with minimum climb of 500' per NM to 1120.



(CONTINUED ON FOLLOWING PAGE)

NOTE: Chart not to scale.

SC-2, 20 MAR 2025 to 17 APR 2025

SC-2, 20 MAR 2025 to 17 APR 2025

# AKUNA NINE DEPARTURE (RNAV)