

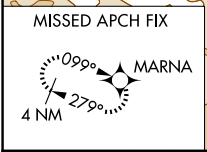
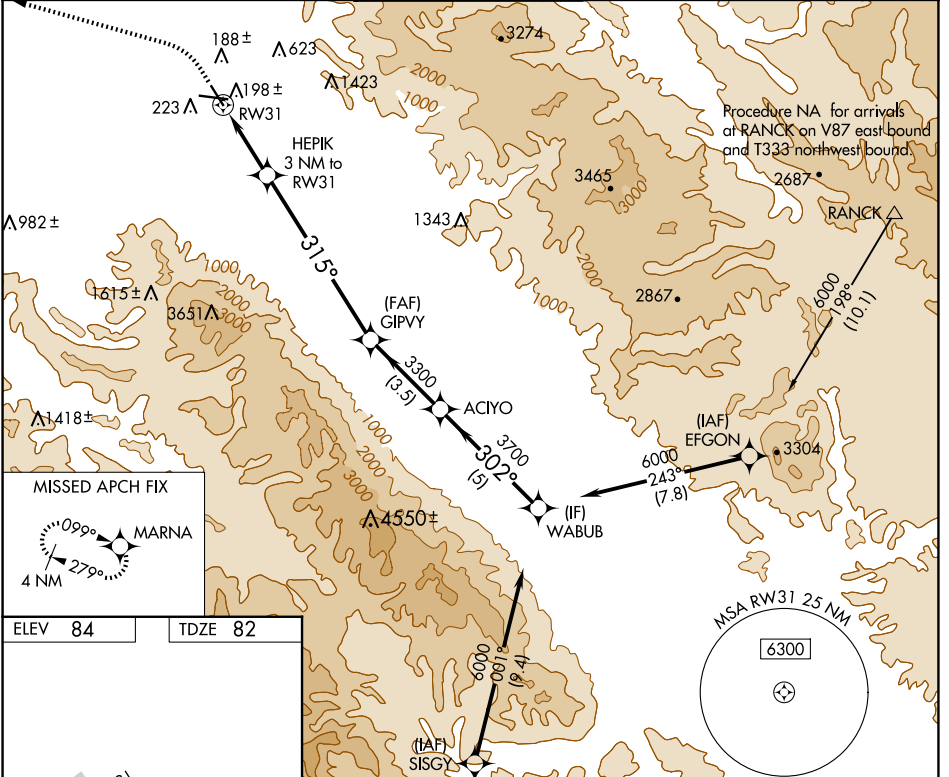
APP CRS	Rwy Idg	4825
315°	TDZE	82
	Apt Elev	84

RNAV (GPS) Y RWY 31

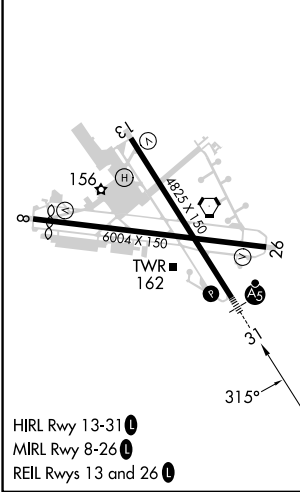
SALINAS MUNI (SNS)

RNP APCH - GPS.		MALSR	MISSED APPROACH: Climb to 600, then climbing left turn to 3000 direct MARNA and hold, continue climb-in-hold to 3000.
<p>⚠ Circling NA for Cat C northeast of Rwy 13 and north of Rwy 26. Circling NA for Cat D northeast of Rwy 13-31.</p>			

ATIS 124.85	NORCAL APP CON 133.0 251.15	SALINAS TOWER * 119.525 (CTAF) 0 239.3	GND CON 121.7	UNICOM 123.0
-----------------------	---------------------------------------	--------------------------------------------------	-------------------------	------------------------



ELEV 84	TDZE 82
---------	---------



600	3000	MARNA	VGSI and descent angles not coincident (VGSI Angle 3.00/TCH 59).	WABUB
			HEPIK 3 NM to RWY 31	
			≤ 3.00° TCH 50	
			1 NM to RWY 31	
			315°	
			1080	
			3300	
			302°	
			3700	
			6000	
			302°	
			6000	
			3.5 NM	
			5 NM	
CATEGORY	A	B	C	D
LNAV MDA	460/24	378 (400-½)	460/35	378 (400-¾)
<input checked="" type="checkbox"/> CIRCLING	540-1	456 (500-1)	800-2 716 (800-2)	1620-3 1536 (1600-3)

SW-2, 20 MAR 2025 to 17 APR 2025

SW-2, 20 MAR 2025 to 17 APR 2025