

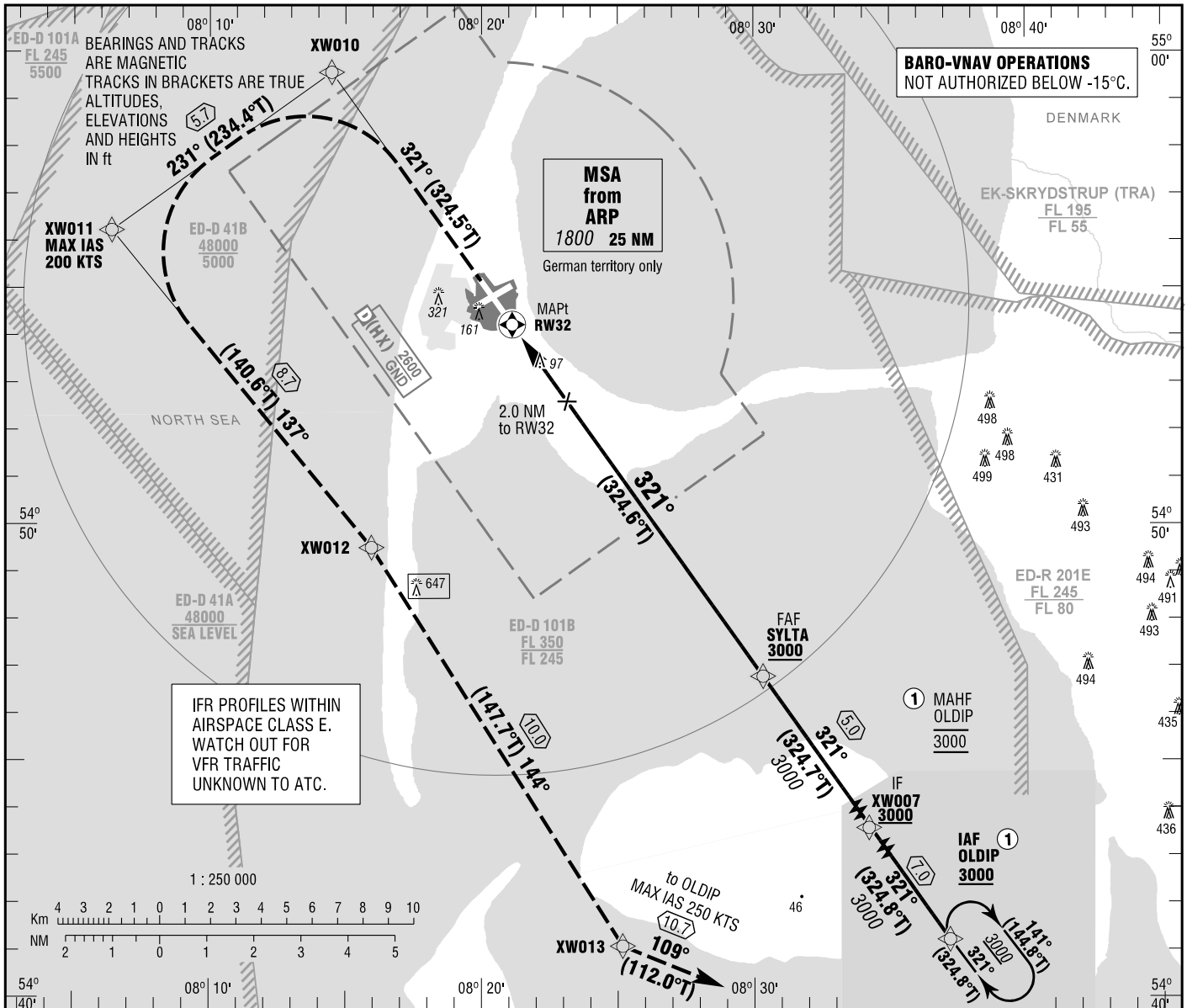
**INSTRUMENT
APPROACH
CHART - ICAO**

VAR 3° E

ELEV 52
OCH RELATED TO
THR 32 ELEV 31

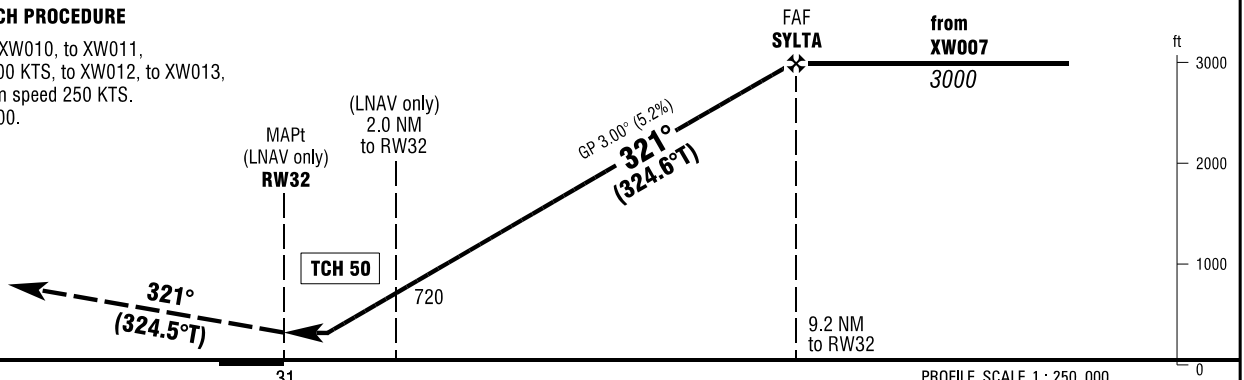
SYLT ATIS 118.400
BREMER RADAR 124.075
SYLT TOWER 119.750

SYLT
RNP RWY 32
EGNOS CH 78873 E32A



MISSED APPROACH PROCEDURE

On course 321° to XW010, to XW011, maximum speed 200 KTS, to XW012, to XW013, to OLDIP, maximum speed 250 KTS. Cross OLDIP at 3000.



OCA (OCH)	A	B	C	D
LNAV	400 (370)	400 (370)	400 (370)	450 (420)
LNAV/VNAV	281 (250)	281 (250)	312 (281)	322 (291)
LPV	211 (180)	222 (191)	230 (199)	240 (209)

DIST THR/RW32	1	2	3	4	5	6	7	8	9
ALTITUDE	400	720	1040	1360	1680	2000	2310	2630	2950

Timing not authorized for defining the MAPt.

GS	kt	80	100	120	140	160	180
SYLTA - RW32 (9.2NM)	MIN:SEC	6:52	5:30	4:35	3:56	3:26	3:03
Rate of descent (5.2%)	ft / MIN	420	530	640	740	850	960

Correction: MSA revised.