

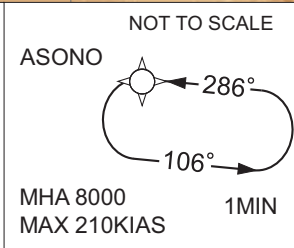
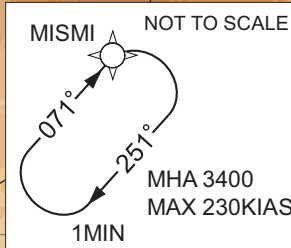
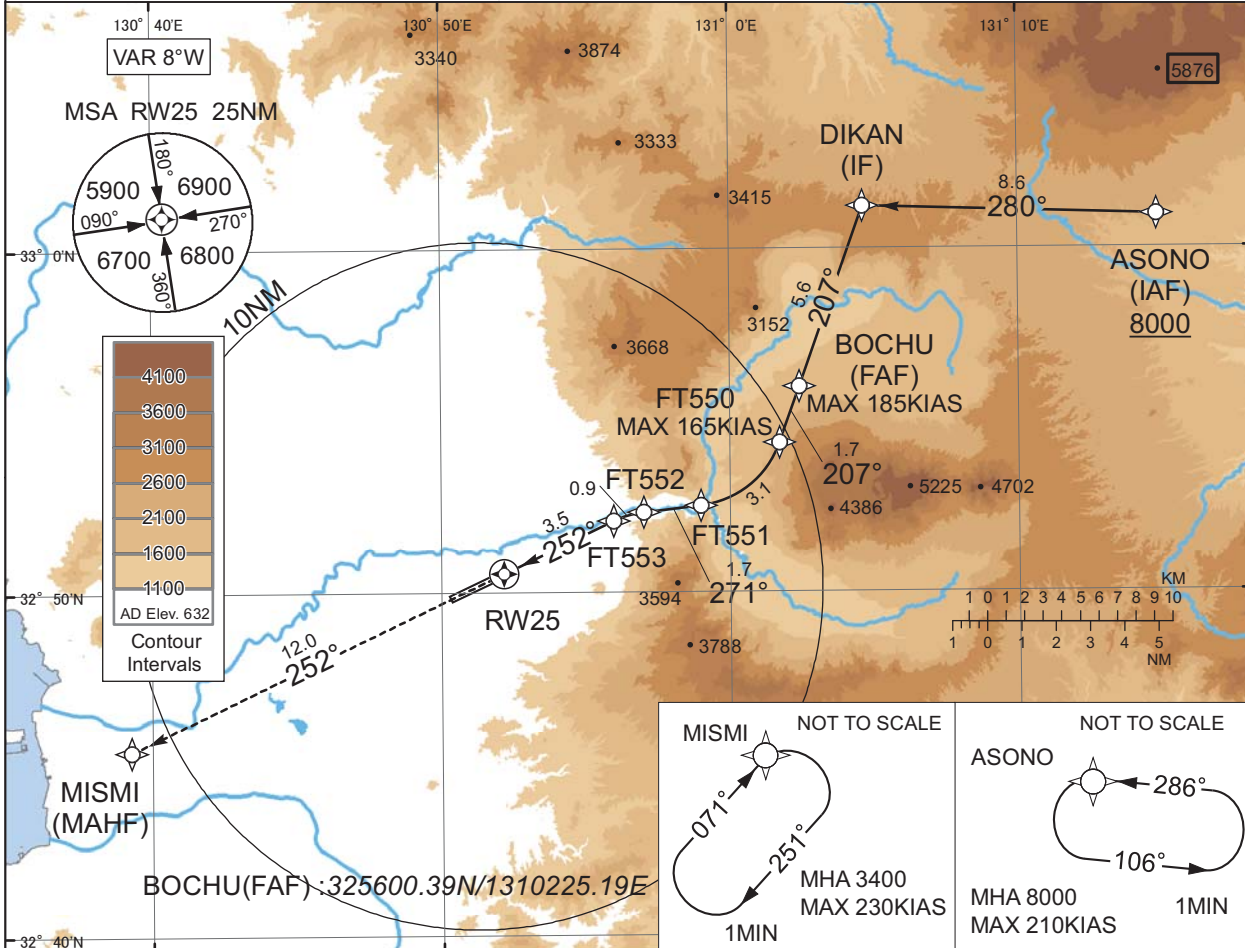
INSTRUMENT APPROACH CHART

RJFT / KUMAMOTO

RNP Z RWY25(AR)

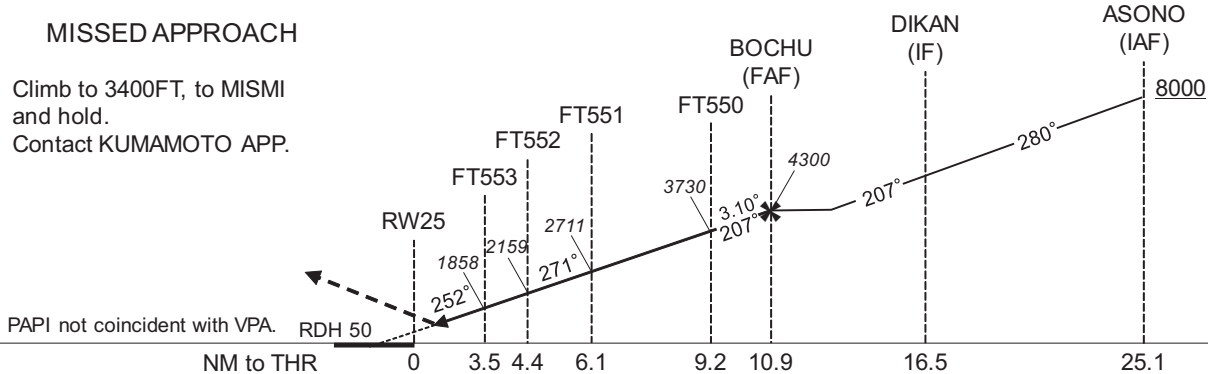
KUMAMOTO APP 127.0 - 126.5 134.0 - 258.9	RNP AR RF required. Night operation only.	KUMAMOTO TWR 118.7 - 126.2 134.0 - 258.9	RADAR AVBL ATIS 128.8
--	---	--	--------------------------

For uncompensated Baro-VNAV systems, procedure not authorized below 2°C / above 38°C



MISSED APPROACH

Climb to 3400FT, to MISMI and hold.
Contact KUMAMOTO APP.



MINIMA	THR elev. 642	AD elev. 632
CAT	RNP 0.30	
	DA(H)	RVR/CMV
A	-	-
B	-	-
C	942(300)	1400
D		1600

Authorization Required

INSTRUMENT APPROACH CHART

RJFT / KUMAMOTO

RNP Z RWY25(AR)

Coding Table

Serial Number	Path Descriptor	Waypoint Identifier	Fly Over	Course °M(°T)	Magnetic Variation	Distance (NM)	Turn Direction	Altitude (FT)	Speed (KIAS)	VPA/ RDH (°/FT)	RNP Value
001	IF	ASONO	-	-	-7.6	-	-	+8000	-	-	-
002	TF	DIKAN	-	280 (272.0)	-7.6	8.6	-	-	-	-	1.0
003	TF	BOCHU	-	207 (199.6)	-7.6	5.6	-	4300	-185	-	1.0
004	TF	FT550	-	207 (199.6)	-7.6	1.7	-	3730	-165	-3.10	0.3
005	RF Center: FTRF1 r=2.77NM	FT551	-	-	-7.6	3.1	R	2711	-	-3.10	0.3
006	TF	FT552	-	271 (263.6)	-7.6	1.7	-	2159	-	-3.10	0.3
007	RF Center: FTRF2 r=2.77NM	FT553	-	-	-7.6	0.9	L	1858	-	-3.10	0.3
008	TF	RW25	Y	252 (244.5)	-7.6	3.5	-	692	-	-3.10/50	0.3
009	TF	MISMI	-	252 (244.5)	-7.6	12.0	-	3400	-	-	1.0

Path	Waypoint Identifier	Inbound Course °M(°T)	Magnetic Variation	Outbound Time (MIN)	Turn Direction	Minimum Altitude (FT)	Maximum Altitude (FT)	Speed (KIAS)	RNP Value
Hold	ASONO	286 (278.5)	-7.6	1.0 (-14000)	L	8000	FL140	-210 (-14000)	1.0
Hold	MISMI	071 (063.5)	-7.6	1.0 (-14000)	R	3400	FL140	-230 (-14000)	1.0

Waypoint Coordinates

Waypoint Identifier	Coordinates	RF Arc Center Identifier	Coordinates
ASONO	330058.11N / 1311449.42E	FTRF1	325518.34N / 1305837.73E
DIKAN	330115.22N / 1310438.68E	FTRF2	324936.20N / 1305722.87E
BOCHU	325600.39N / 1310225.19E		
FT550	325422.38N / 1310143.69E		
FT551	325232.83N / 1305859.64E		
FT552	325221.62N / 1305700.92E		
FT553	325206.61N / 1305558.39E		
RW25	325035.24N / 1305210.28E		
MISMI	324524.10N / 1303916.73E		