

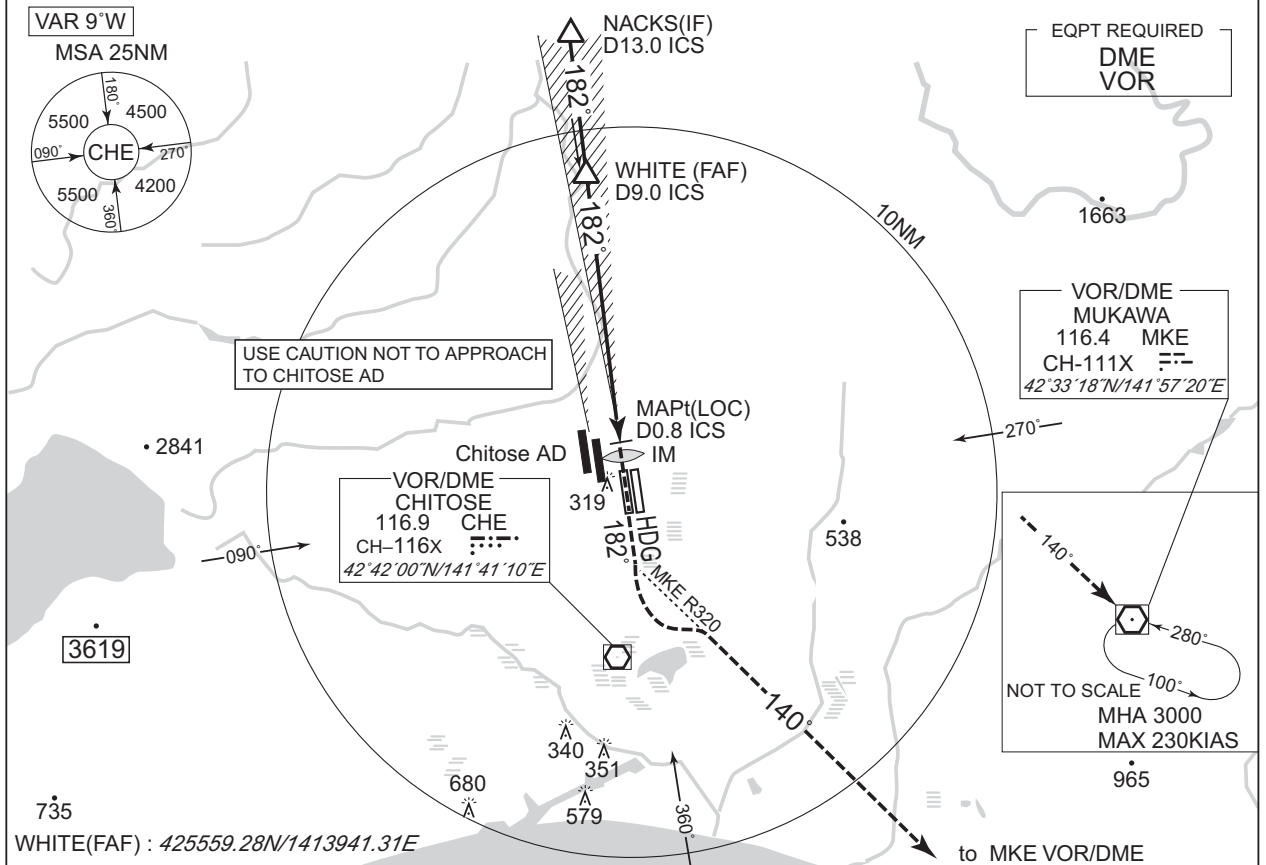
INSTRUMENT APPROACH CHART

RJCC / NEW CHITOSE

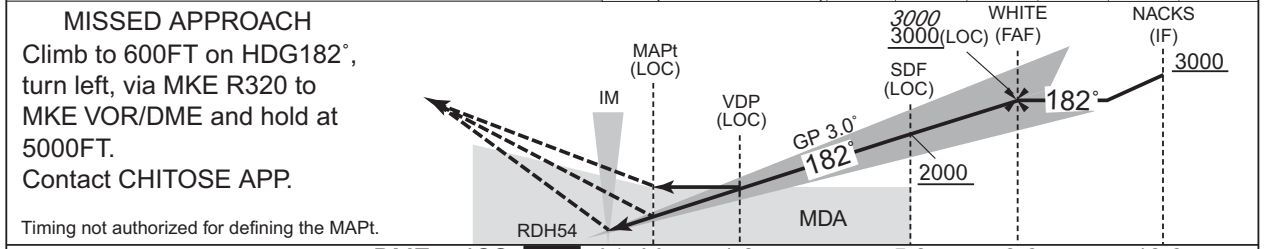
ILS Y or LOC Y RWY19R (CAT II & III)

CHITOSE APP 120.1 – 124.7	ILS-LOC 111.5 ICS ::-- ILS-GP 332.9 ILS-DME CH-52X	CHITOSE TOWER 118.8 – 126.2 – 121.6G	RADAR AVBL ATIS 128.6
------------------------------	---	---	--------------------------

Simultaneous approach authorized with RJCJ RWY18L(PAR) or RWY18R(PAR)



	NM to ICS	MAPt	2	3	4	5	FAF
	ALT (3.0° APCH Path)	-	711	1030	1348	1667	-



	DME to ICS	0.2	0.4	0.8	1.3	5.9	9.0	13.0
	NM to THR	0	0.2	0.6	1.1	5.8	8.8	12.8

MINIMA		THR elev. 82			AD elev. 70					
CAT	CAT III	CAT II		CAT I		LOC		CIRCLING		VIS
	RVR	DA(H)	RA	RVR	DA(H)	RVR/CMV	MDA(H)	RVR/CMV	MDA(H)	
A								900	510 (440)	1600
B	100	182 (100)	103	300	282 (200)	550	460 (390)	1000	520 (450)	
C										2400
D								1400	620 (550)	3200

Circling to EAST side of RWY only.

CHANGE : Description of VAR.