

INSTRUMENT APPROACH CHART - ICAO

EGNOS
CH 79433
E16A

Podova ACC
Podova FIC
AFIS Trento Aerodrome Info
AFIS Bolzano Aerodrome Info

120.725
124.150
119.650
120.600

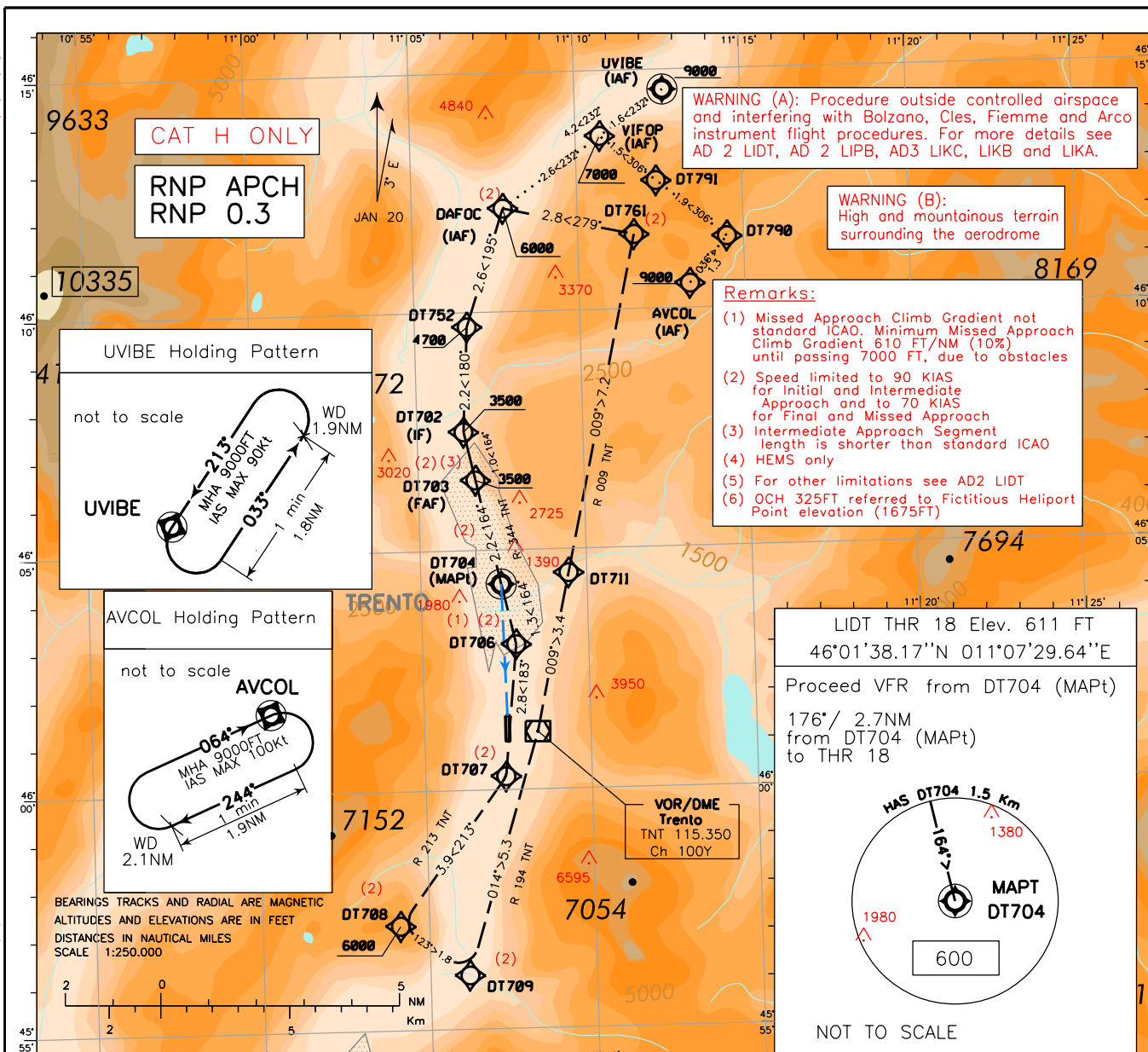
AD ELEV
610

TRENTO/Mattarello
LIDT
RNP Z 164

DOC 8168 ED. 7 - 2020 AMDT 9(1) (3)

WARNING (A) UPDATED

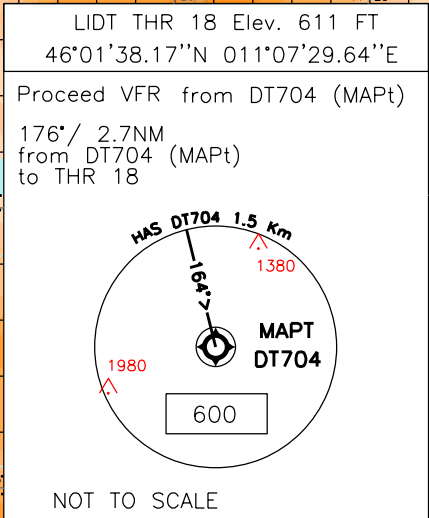
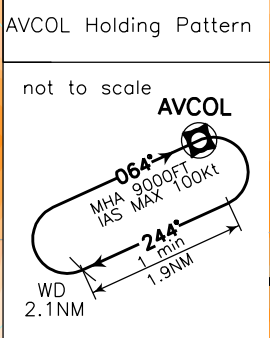
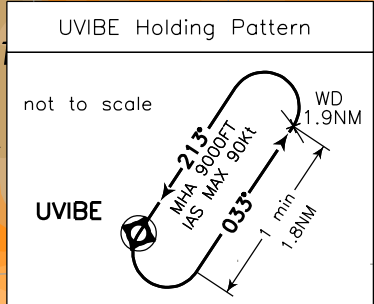
CHANGE:



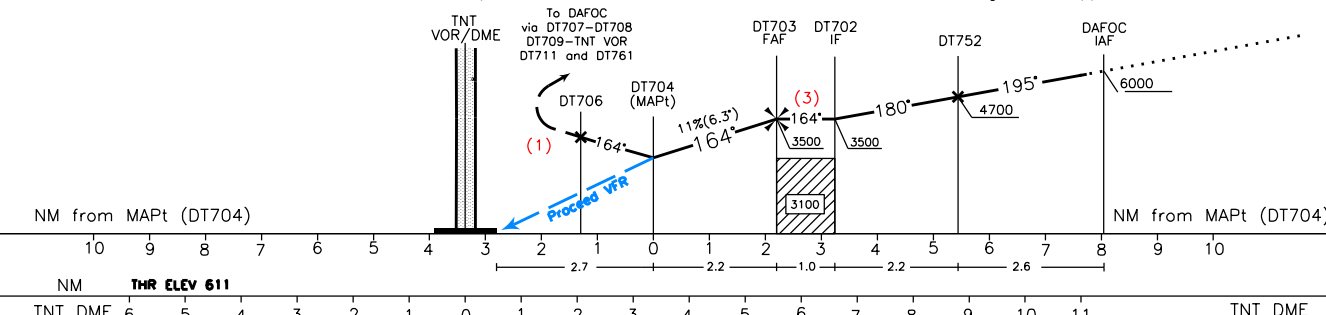
WARNING (A): Procedure outside controlled airspace and interfering with Bolzano, Cles, Fiemme and Arco instrument flight procedures. For more details see AD 2 LIDT, AD 2 LIPB, AD3 LIKC, LIKB and LIKA.

WARNING (B): High and mountainous terrain surrounding the aerodrome

- Remarks:**
- (1) Missed Approach Climb Gradient not standard ICAO. Minimum Missed Approach Climb Gradient 610 FT/NM (10%) until passing 7000 FT, due to obstacles
 - (2) Speed limited to 90 KIAS for Initial and Intermediate Approach and to 70 KIAS for Final and Missed Approach
 - (3) Intermediate Approach Segment length is shorter than standard ICAO
 - (4) HEMS only
 - (5) For other limitations see AD2 LIDT
 - (6) OCH 325FT referred to Fictitious Heliport Point elevation (1675FT)



TRANSITION ALT 10000 MISSED APPROACH: (1) Proceed on TR 164° (RDL 344 TNT VOR) climbing to 6000 FT. At DT706 (D1.9 TNT DME) turn right on TR 183° to DT707 then right turn on TR 213° (RDL 213 TNT VOR). At DT708 (D5 TNT DME), turn left on TR 123° to DT709 then turn left on TR 014° (RDL 194 TNT VOR) bound to TNT VOR then proceed via DT711, DT761 and DAFOC. IAS MAX 70 Kt during Missed approach Turn.



OCA (OCH)		CAT H	GS	FT PER MIN	FAF-MAPT	DIST DT704	ALT(HGT)	MNM SECT ALT 25 NM ARP LIDT
LPV	2000 (1390) ⁽⁶⁾		90	1003	2.2 NM	2	3342(2732)	
			80	891	1:39	1	2671(2061)	
			70	780	1:53			
			60	668	2:12			