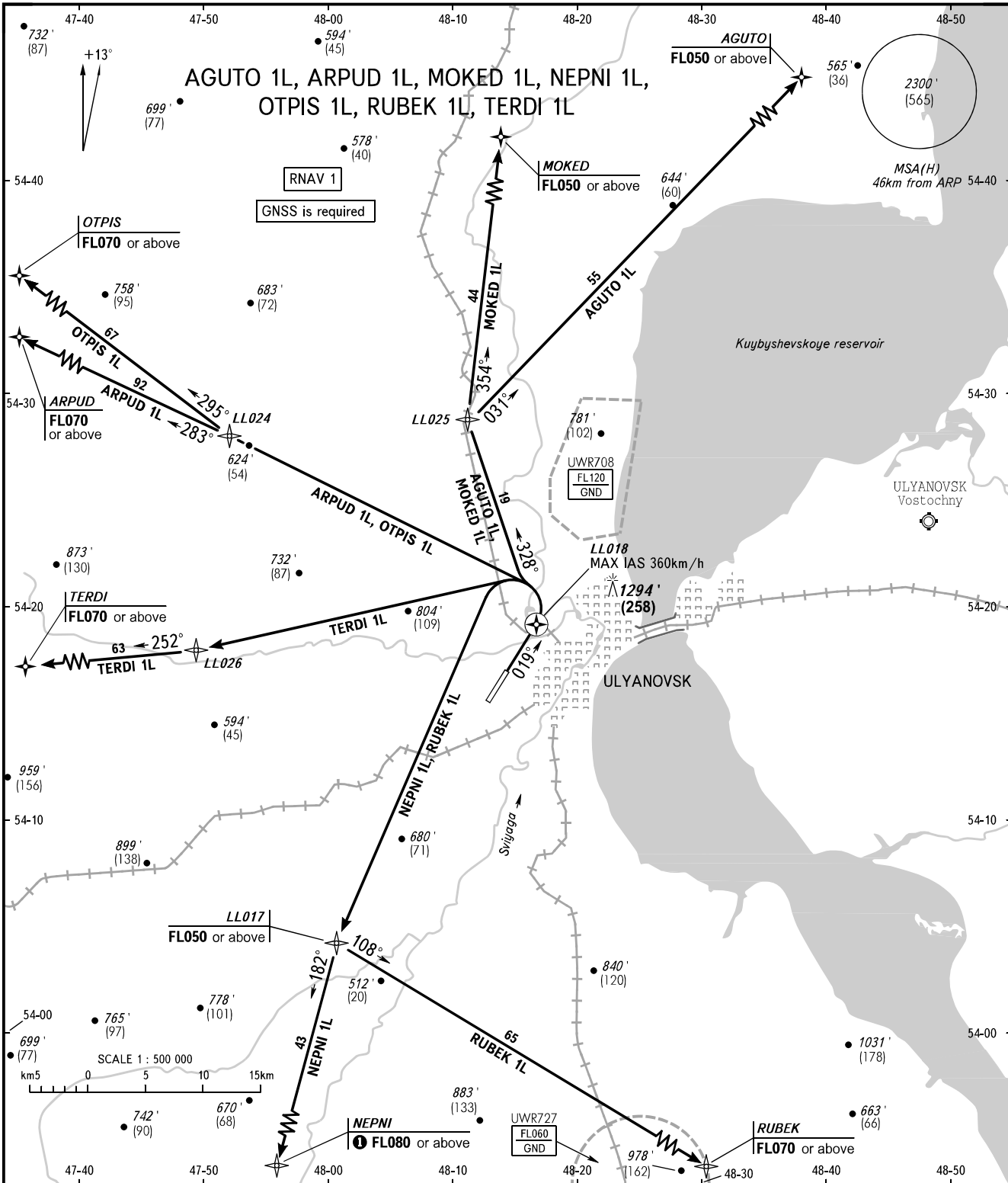


STANDARD DEPARTURE CHART  
INSTRUMENT (SID) - ICAO

ULYANOVSK, RUSSIA  
BARATAYEVKA  
RNAV RWY 02

TRANSITION  
ALTITUDE: 4000'



START 120.400  
RADAR 120.800  
APPROACH 127.300

① FL070 - by ATC.

BEARINGS AND TRACKS ARE MAGNETIC  
ALTITUDES IN FEET  
HEIGHTS IN METRES  
ELEVATIONS IN FEET AND METRES  
DISTANCES IN KILOMETRES

Alt set: -QNH(QFE on req);  
-hPa(mm on req).

CHANGE: Heading, HGT