

STANDARD ARRIVAL CHART
INSTRUMENT (STAR)

RNAV1(GNSS)
SURVEILLANCE REQUIRED

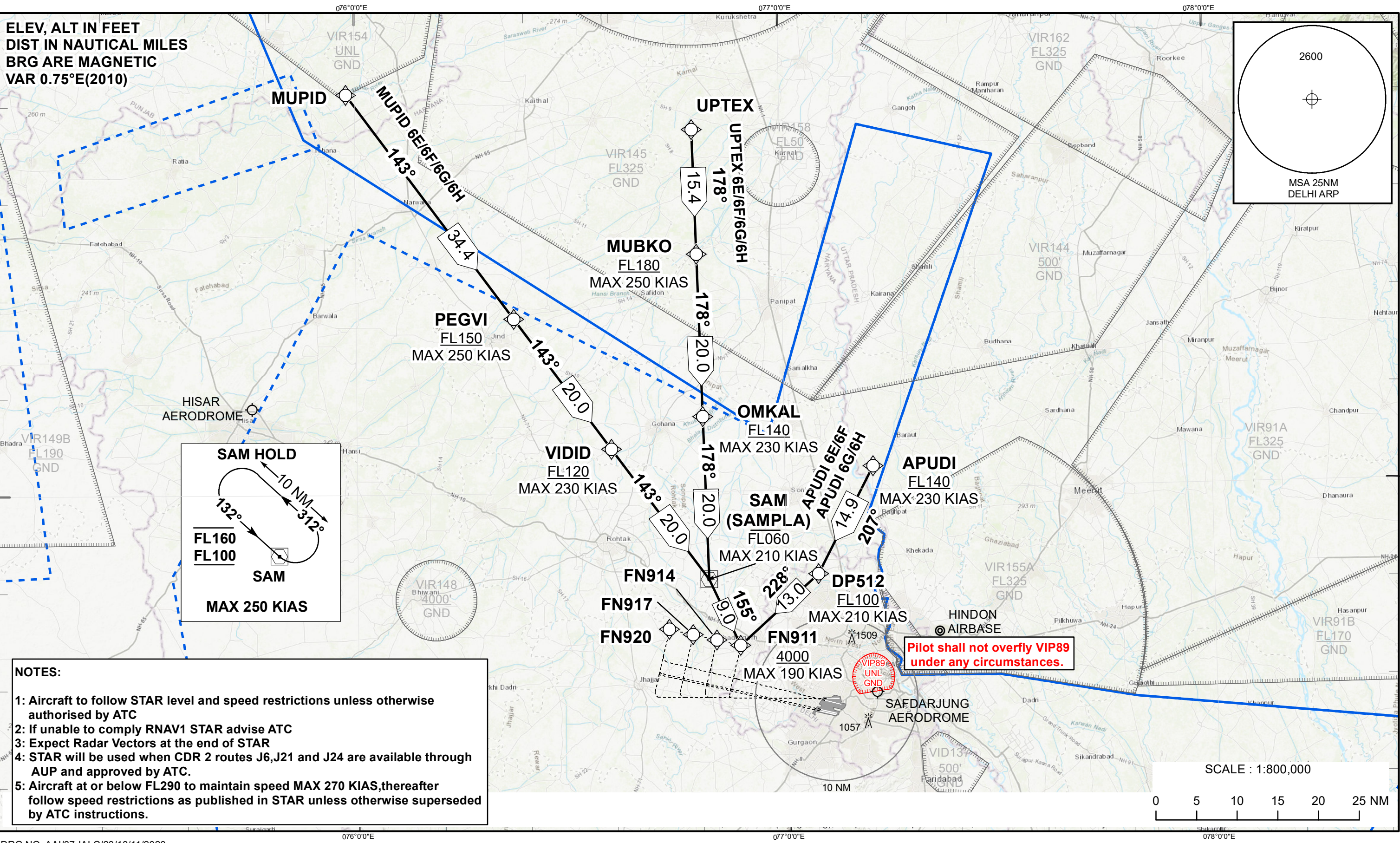
TRANSITION ALT
5000

TWR(RWY09)	118.750	APP(FD)	124.200
TWR(RWY10)	118.100	ACC(E)	120.900
TWR(RWY11L)	123.825	ACC(S)	125.700
TWR(RWY11R)	125.850	ACC(SW)	132.150
APP(ARR1)	126.350	ACC(W)	124.550
APP(ARR2)	125.675		

SARSAWA 123.500
AMBALA 122.700/
119.500

DELHI (VIDP)
INDIA
CONDITIONAL STARS
APUDI 6E,MUPID 6E,UPTEx 6E - RWY09
APUDI 6F,MUPID 6F,UPTEx 6F - RWY10
APUDI 6G,MUPID 6G,UPTEx 6G - RWY11L
APUDI 6H,MUPID 6H,UPTEx 6H - RWY11R

ELEV, ALT IN FEET
DIST IN NAUTICAL MILES
BRG ARE MAGNETIC
VAR 0.75°E(2010)



- NOTES:
- Aircraft to follow STAR level and speed restrictions unless otherwise authorised by ATC
 - If unable to comply RNAV1 STAR advise ATC
 - Expect Radar Vectors at the end of STAR
 - STAR will be used when CDR 2 routes J6,J21 and J24 are available through AUP and approved by ATC.
 - Aircraft at or below FL290 to maintain speed MAX 270 KIAS,thereafter follow speed restrictions as published in STAR unless otherwise superseded by ATC instructions.