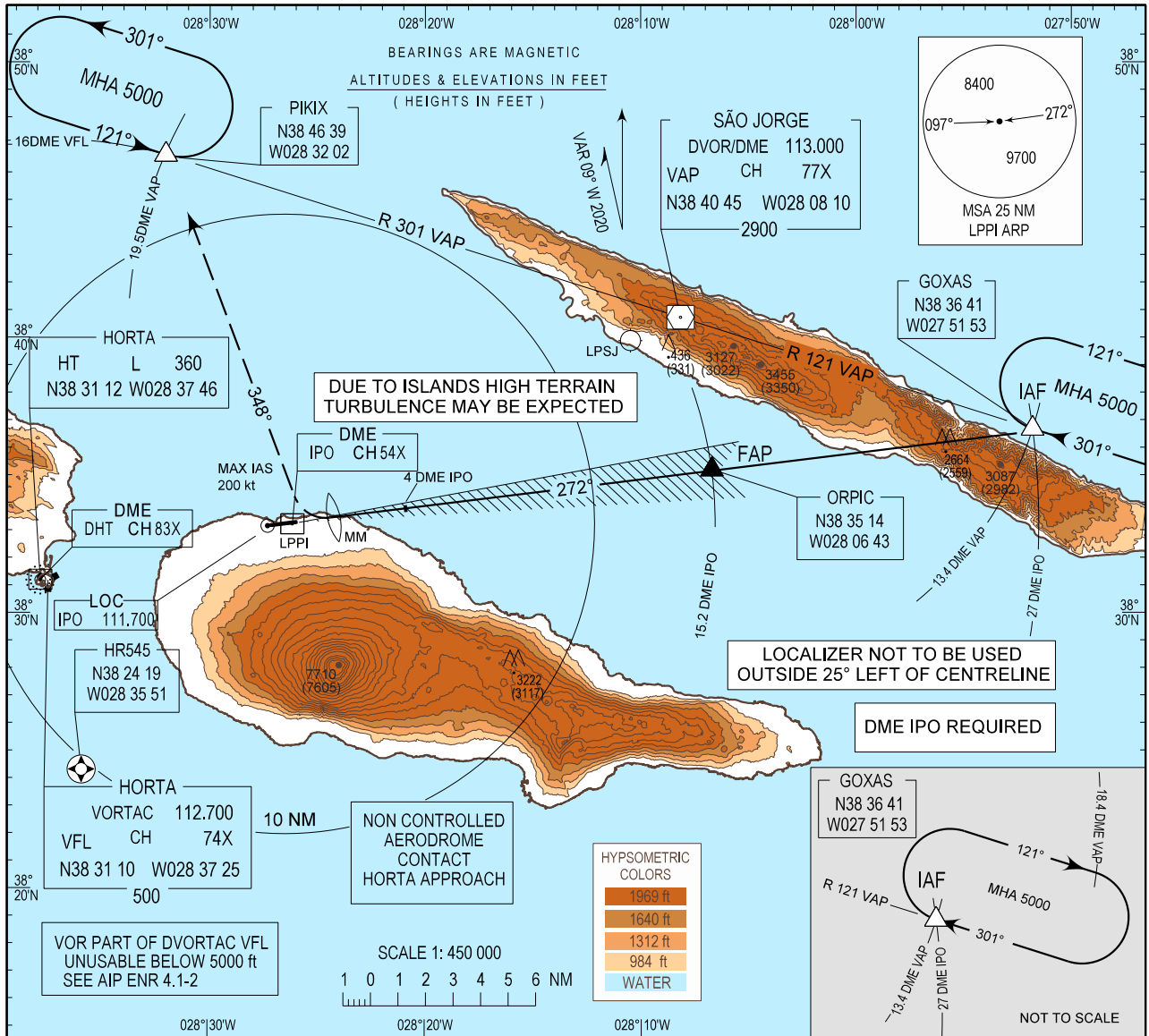


INSTRUMENT APPROACH CHART - ICAO
AD ELEV 114 ft
HEIGHTS RELATED
THR RWY 27 - ELEV 105 ft

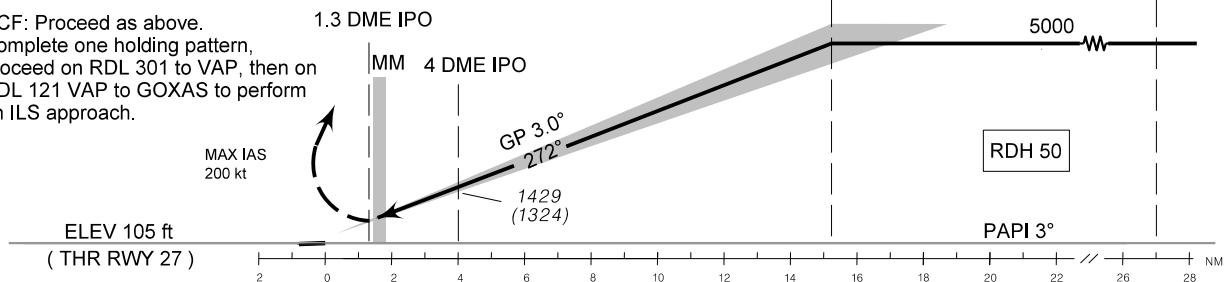
PICO INFORMATION 122.700
HORTA APPROACH 120.600
HORTA TOWER 118.000
SANTA MARIA RADAR 132.150

PICO / LPPI
ILS
RWY27



MISSED APPROACH:
At 1.3 DME IPO turn right on heading 348° climbing to 5000 ft then proceed to holding PIKIX on RDL 301 VAP. Maximum IAS on turn 200 kt. CTC Horta APP.

RCF: Proceed as above. Complete one holding pattern, proceed on RDL 301 to VAP, then on RDL 121 VAP to GOXAS to perform an ILS approach.



CAT	ILS CAT I		CIRCLING RWY27			
	DA/H	OCH	NORTH		SOUTH	
	MDA/H	OCH	MDA/H	OCH	MDA/H	OCH
A	520 (415)	407	1060 (946)	940	NOT AUTHORIZED	
B	520 (415)	407	1060 (946)	940	NOT AUTHORIZED	
C	520 (415)	407	1210 (1096)	1090	NOT AUTHORIZED	

		DIST DME IPO														
NM		2	3	4	5	6	7	8	9	10	11	12	13	14	15	
ALTITUDE (HEIGHT)		792 (687)	1110 (1005)	1429 (1324)	1747 (1642)	2066 (1961)	2384 (2279)	2703 (2598)	3021 (2916)	3340 (3235)	3658 (3553)	3976 (3871)	4295 (4190)	4613 (4508)	4932 (4827)	

MAG VAR updated.

THIS PAGE INTENTIONALLY LEFT BLANK