

WAAS CH <b>70402</b> <b>W35A</b>	APP CRS <b>350°</b>	Rwy Idg <b>10008</b> TDZE <b>3671</b> Apt Elev <b>3671</b>
--	------------------------	--

# RNAV (GPS) RWY 35

ROSWELL AIR CENTER (ROW)

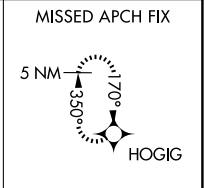
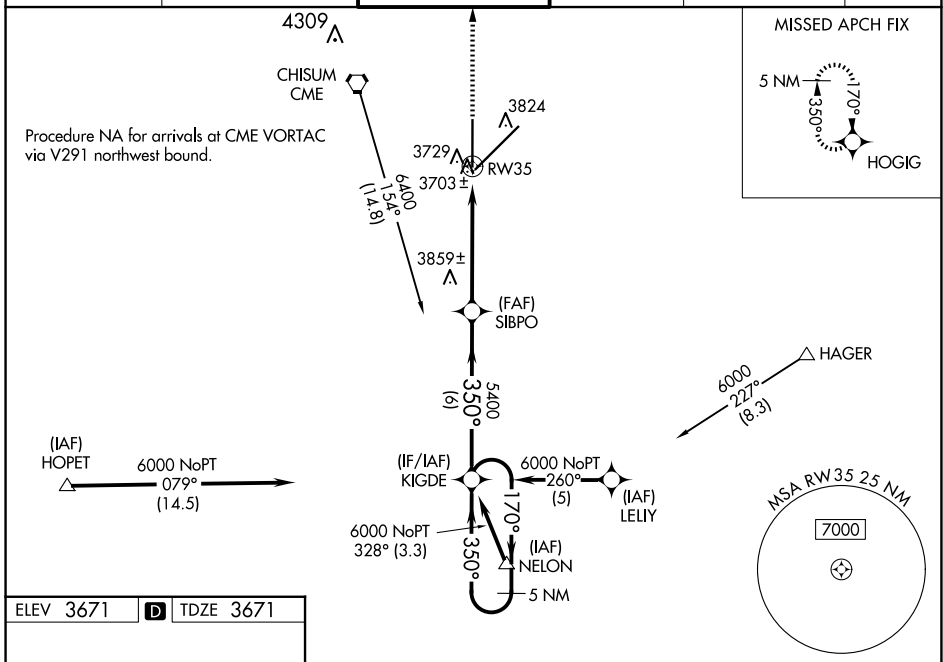
RNP APCH - GPS.

▼ For uncompensated Baro-VNAV systems, LNAV/VNAV NA below -22°C or above 41°C. When local altimeter setting not received, use Artesia altimeter setting; increase LPV DA to 4001 feet and all visibilities ¼ SM; increase LNAV/VNAV DA to 4033 feet; increase all MDAs 80 feet and visibility LNAV Cat C ¼ SM, and Circling Cat D ¼ SM. Baro-VNAV and VDP NA when using Artesia altimeter setting.

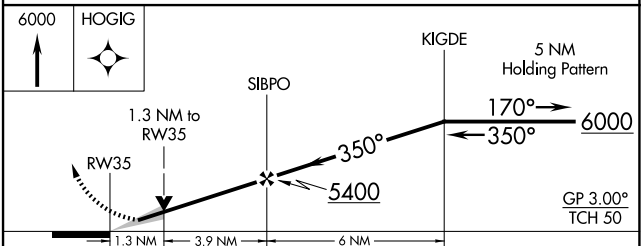
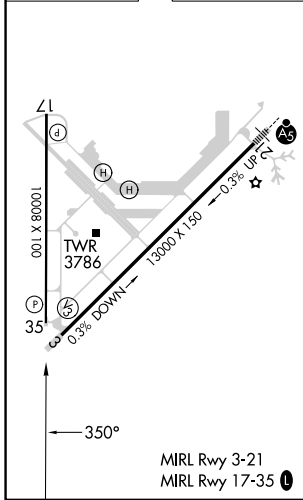
▲ ASR

MISSED APPROACH: Climb to 6000 direct HOGIG and hold.

ATIS <b>128.45 306.2</b>	ROSWELL APP CON * <b>119.6 239.0</b>	ROSWELL TOWER * <b>118.5 (CTAF) 233.7</b>	GND CON <b>121.9 348.6</b>	CLNC DEL <b>132.875 282.25</b>	UNICOM <b>122.95</b>
-----------------------------	---	--	-------------------------------	-----------------------------------	-------------------------



ELEV 3671	<b>D</b>	TDZE 3671
-----------	----------	-----------



CATEGORY	A	B	C	D
LPV DA	3921-3/4 250 (300-3/4)			
LNAV/VNAV DA	3953-1 282 (300-1)			
LNAV MDA	4120-1	449 (500-1)	4120-1 1/4 449 (500-1 1/4)	4120-1 1/2 449 (500-1 1/2)
CIRCLING	4140-1	469 (500-1)	4140-1 1/2 469 (500-1 1/2)	4300-2 629 (700-2)

SW-1, 20 MAR 2025 to 17 APR 2025

SW-1, 20 MAR 2025 to 17 APR 2025